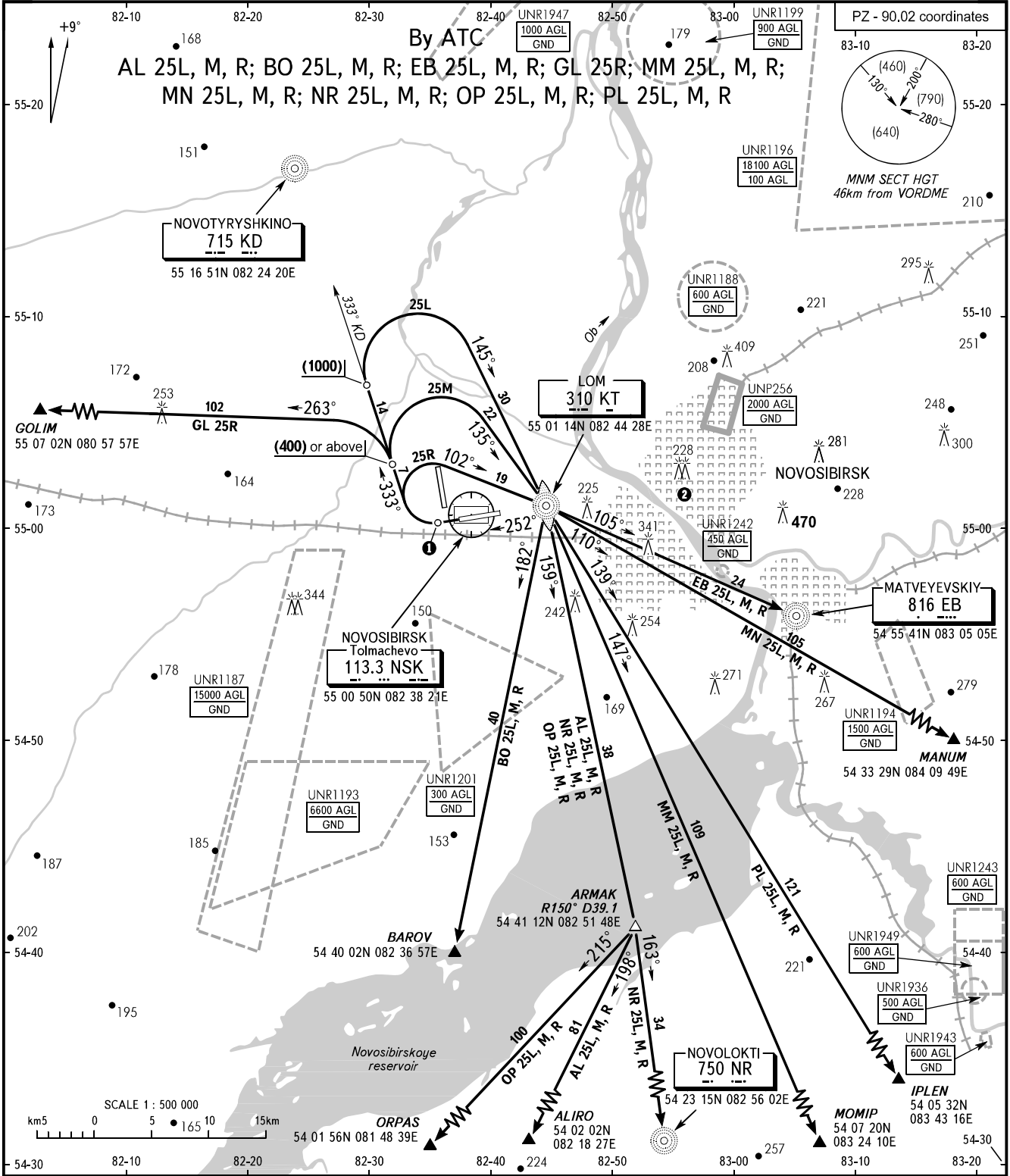


STANDARD DEPARTURE CHART  
INSTRUMENT (SID) - ICAO

TRANSITION  
HEIGHT : (1300)

NOVOSIBIRSK, RUSSIA  
TOLMACHEVO  
RWY 25



|                    |         |
|--------------------|---------|
| START              | 118.500 |
| KRUG               | 122.000 |
| APPROACH FL060-190 | 127.500 |
| FL060-070 (by ATC) | 127.100 |

- ① Initial turn shall be executed at D3.0 NSK. When necessary, flaps and gear retraction shall be made after or in the process of turn.
- ② Flights of civil ACFT over the central part of the city below (1200) are PROHIBITED.

BEARINGS AND TRACKS ARE MAGNETIC  
ALTITUDES, HEIGHTS AND ELEVATIONS ARE IN METRES  
DISTANCES ARE IN KILOMETRES

CHANGE: OP 25L, M, R