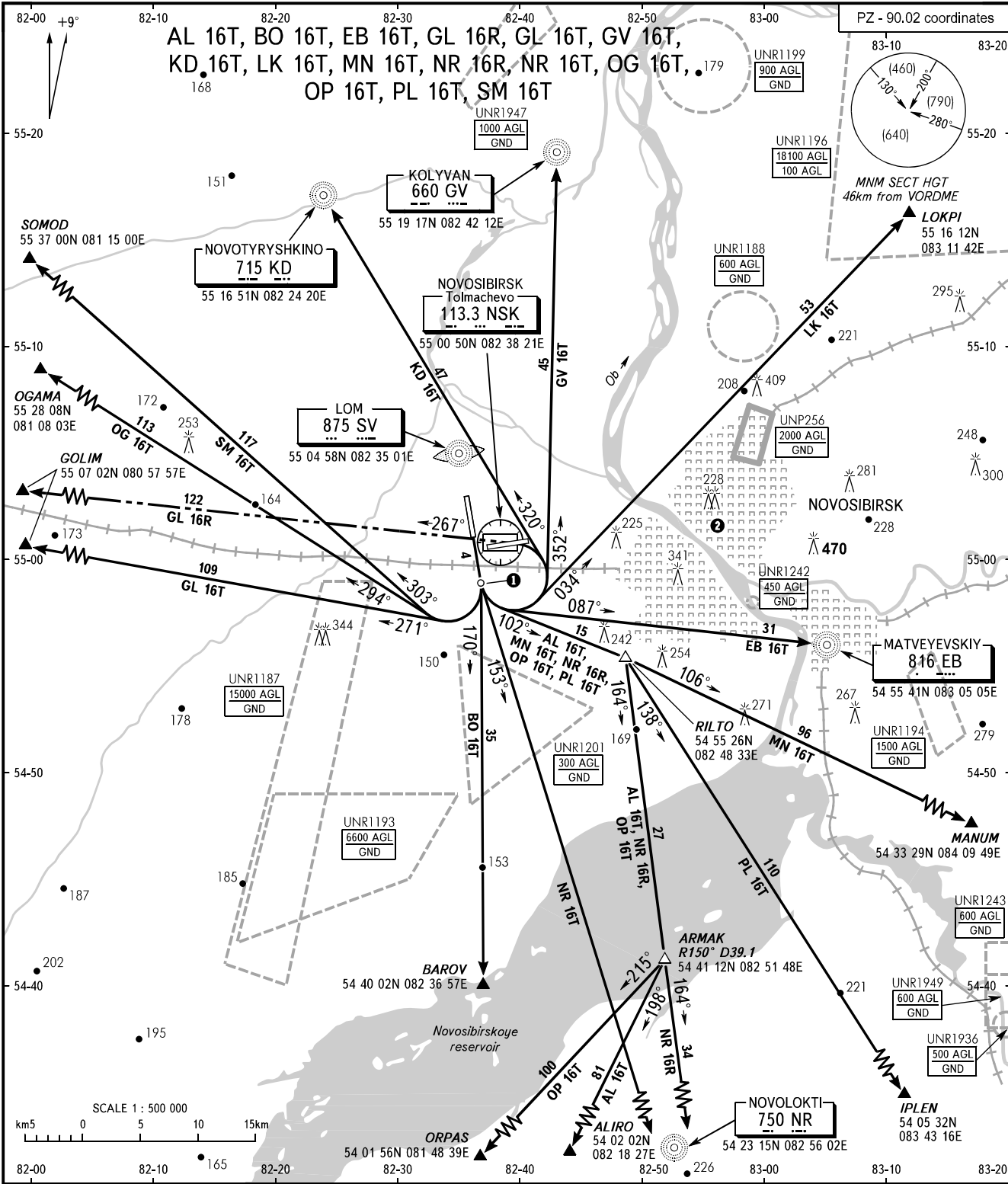


STANDARD DEPARTURE CHART  
INSTRUMENT (SID) - ICAO

TRANSITION  
HEIGHT : (1300)

NOVOSIBIRSK, RUSSIA  
TOLMACHEVO  
RWY 16

AL 16T, BO 16T, EB 16T, GL 16R, GL 16T, GV 16T,  
KD 16T, LK 16T, MN 16T, NR 16R, NR 16T, OG 16T,  
OP 16T, PL 16T, SM 16T



START	118.500
KRUG	122.000
APPROACH	127.500
FL060-190	127.100
FL060-070 (by ATC)	

- ① Initial turn shall be executed at D3.8 NSK. When necessary, flaps and gear retraction shall be made after or in the process of turn.
- ② Flights of civil ACFT over the central part of the city below (1200) are PROHIBITED.

BEARINGS AND TRACKS ARE MAGNETIC  
ALTITUDES, HEIGHTS AND ELEVATIONS ARE IN METRES  
DISTANCES ARE IN KILOMETRES

CHANGE: OBST