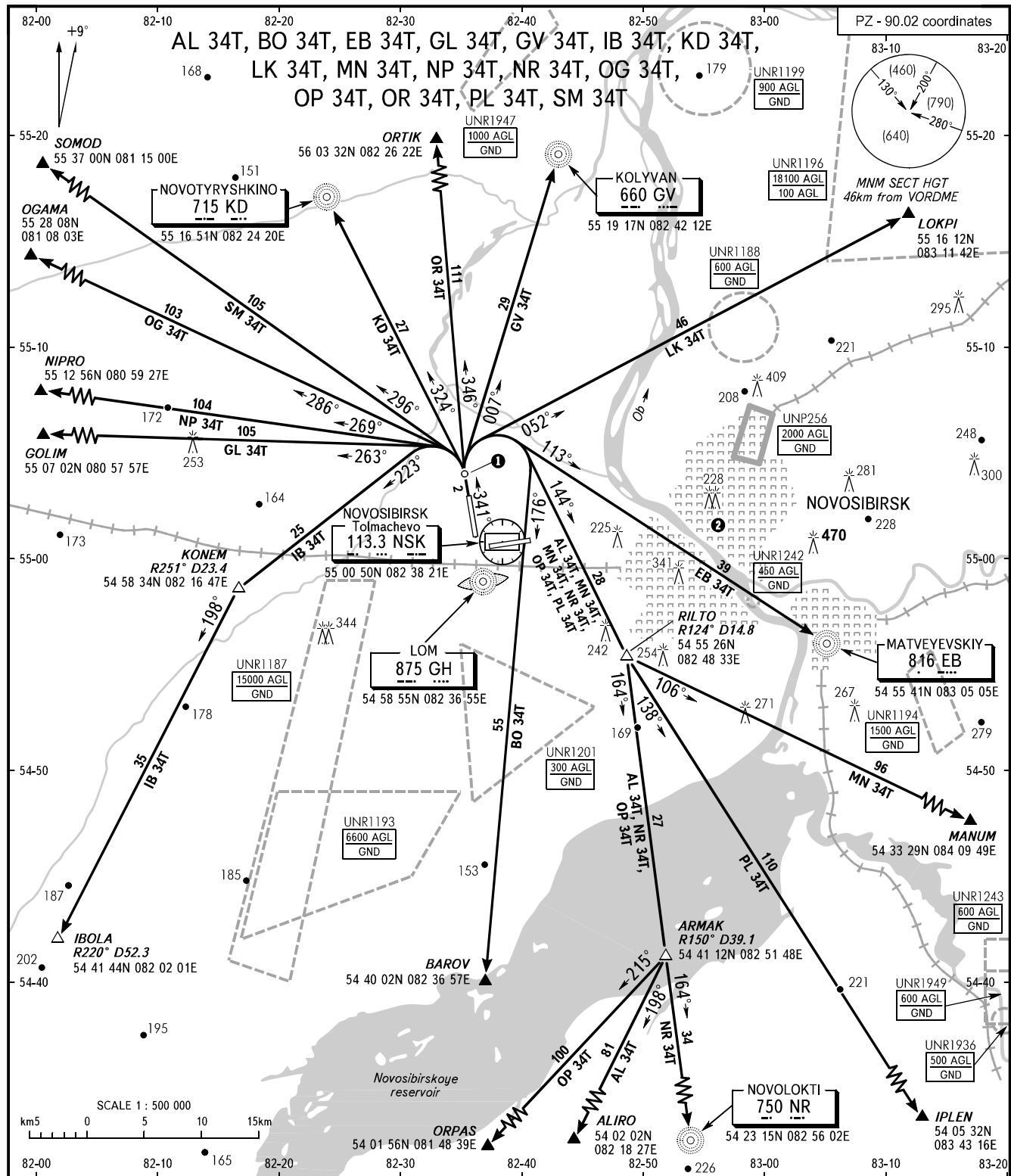


STANDARD DEPARTURE CHART
INSTRUMENT (SID) - ICAO

TRANSITION
HEIGHT : (1300)

NOVOSIBIRSK, RUSSIA
TOLMACHEVO
RWY 34



START	118.500
KRUG	122.000
APPROACH	FL060-190
	FL060-070 (by ATC)
	127.500
	127.100

- 1 Initial turn shall be executed at D6.8 NSK. When necessary, flaps and gear retraction shall be made after or in the process of turn.
- 2 Flights of civil ACFT over the central part of the city below (1200) are PROHIBITED.

BEARINGS AND TRACKS ARE MAGNETIC
 ALTITUDES, HEIGHTS AND ELEVATIONS ARE IN METRES
 DISTANCES ARE IN KILOMETRES

CHANGE: OBST