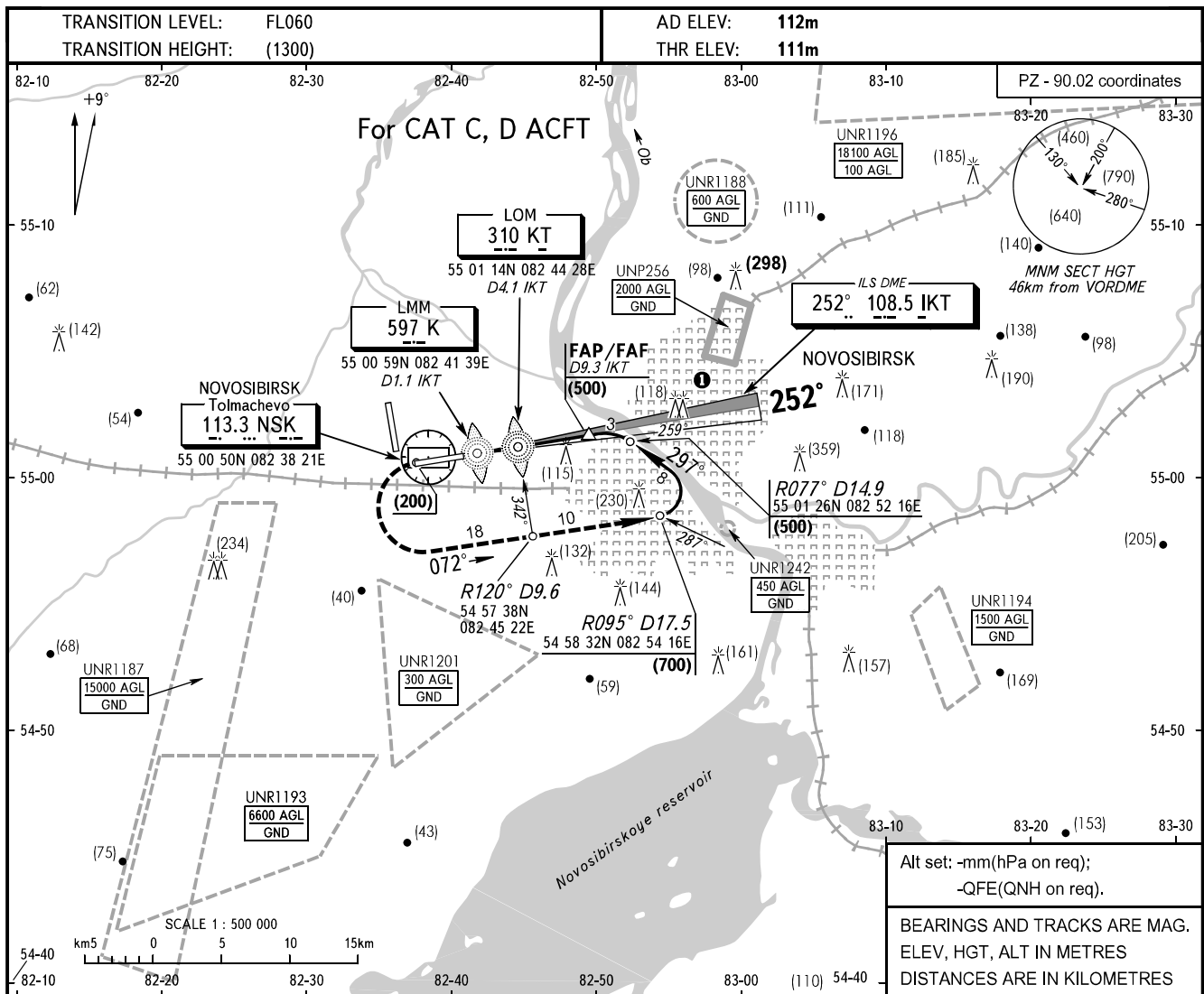


**INSTRUMENT
APPROACH
CHART - ICAO**

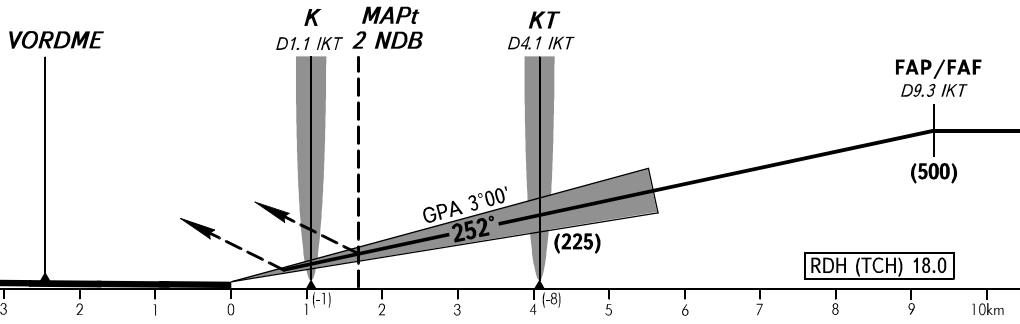
APPROACH	FL060-190	127.500
	FL060-070 (by ATC)	127.100
KRUG		122.000
TOWER		118.500

**NOVOSIBIRSK, RUSSIA
TOLMACHEVO
ILS DME, 2 NDB RWY 25**



Alt set: -mm(hPa on req);
-QFE(QNH on req).
BEARINGS AND TRACKS ARE MAG.
ELEV, HGT, ALT IN METRES
DISTANCES ARE IN KILOMETRES

MISSED APPROACH
Climb on track 252° to (200), then turn LEFT on track 072° climbing to (700), then according to chart.



		OCA/H	A	B	C	D
Straight-in	CAT I				159(49)	164(54)
	2 NDB				218(108)	218(108)
Approach	With FAF				400(290)	400(290)
	WO FAF				400(290)	400(290)

1 Flights of civil ACFT over the central part of the city below (1200) are PROHIBITED.
WARNING
FAF DIST is D11.8km NSK, by SRE is 11.0km.

GROUND SPEED	km/h	150	180	210	240	270	300	330	360	390	420	450
FAF-MAPt 2 NDB 7600m	min:sec	3.02	2.32	2.10	1.54	1.41	1.31	1.23	1.16	1.10	1.05	1.01
RATE OF DESCENT (Grad 5.2%)	m/s	2.1	2.6	3.0	3.4	3.8	4.3	4.7	5.1	5.5	6.0	6.4