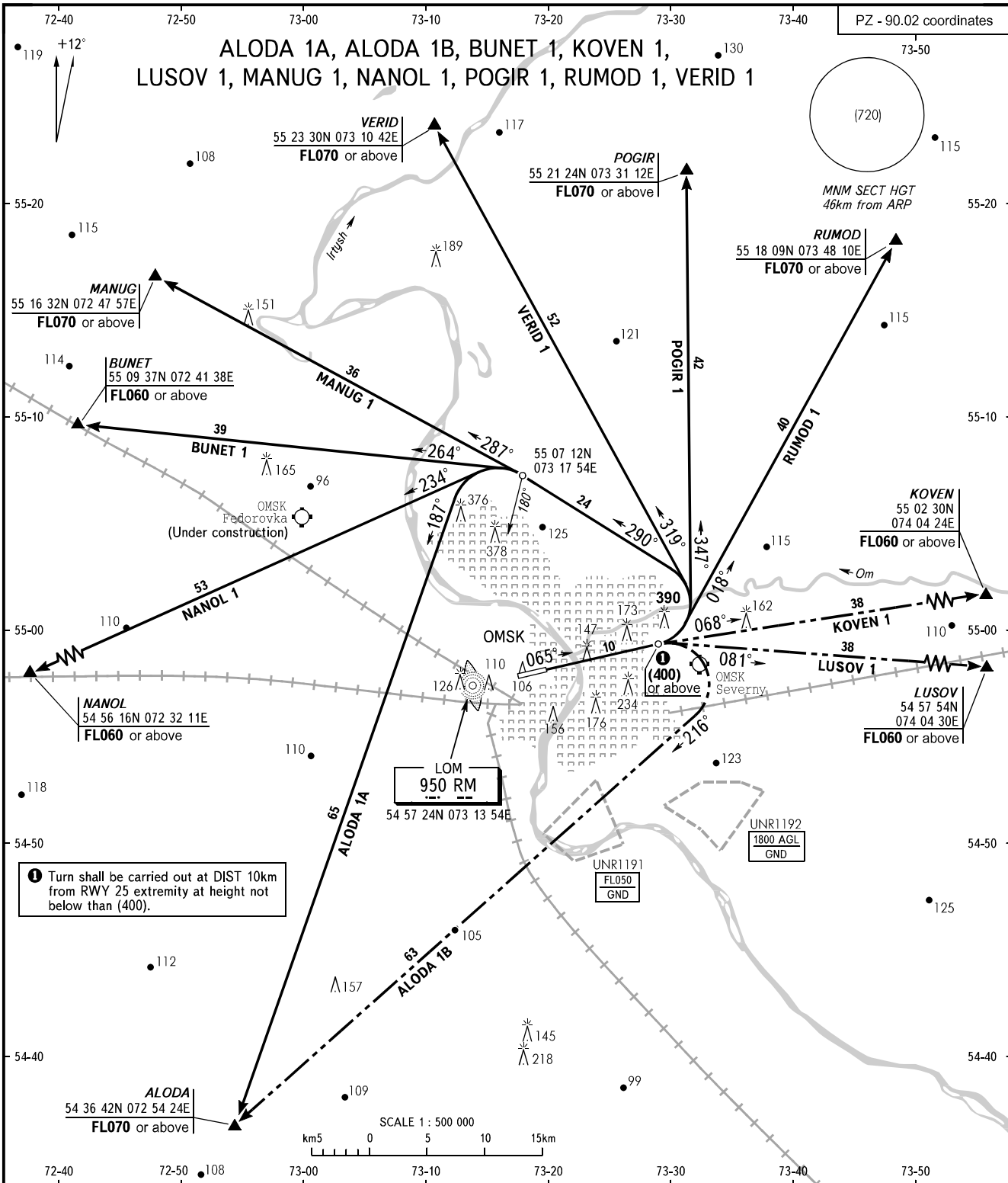


STANDARD DEPARTURE CHART
INSTRUMENT (SID) - ICAO

TRANSITION
HEIGHT : (800)

OMSK, RUSSIA
TSENTRALNY
RWY 07



START 119.000
RADAR 119.000
APPROACH 131.200

WARNING:

1. Take-off shall be carried out using noise abatement procedure for the area according to the Aeroplane Flight Manual.
2. Take-off and climbing to (400) shall be carried out with climb gradient 3.7%.

Ground Speed	km/h	200	250	300	350	400	450	500	550
Rate of climb	m/s	2.1	2.6	3.1	3.6	4.1	4.6	5.1	5.7

If climb gradient 3.7% cannot be complied with, take-off minima for CAT A, B ACFT shall be ceiling 330 VIS 2300, for CAT C, D ACFT shall be ceiling 350 VIS 2400 with visual avoidance of obstacle 390 at 500m to the right.

BEARINGS AND TRACKS ARE MAGNETIC
ALTITUDES, HEIGHTS AND ELEVATIONS ARE IN METRES
DISTANCES ARE IN KILOMETRES