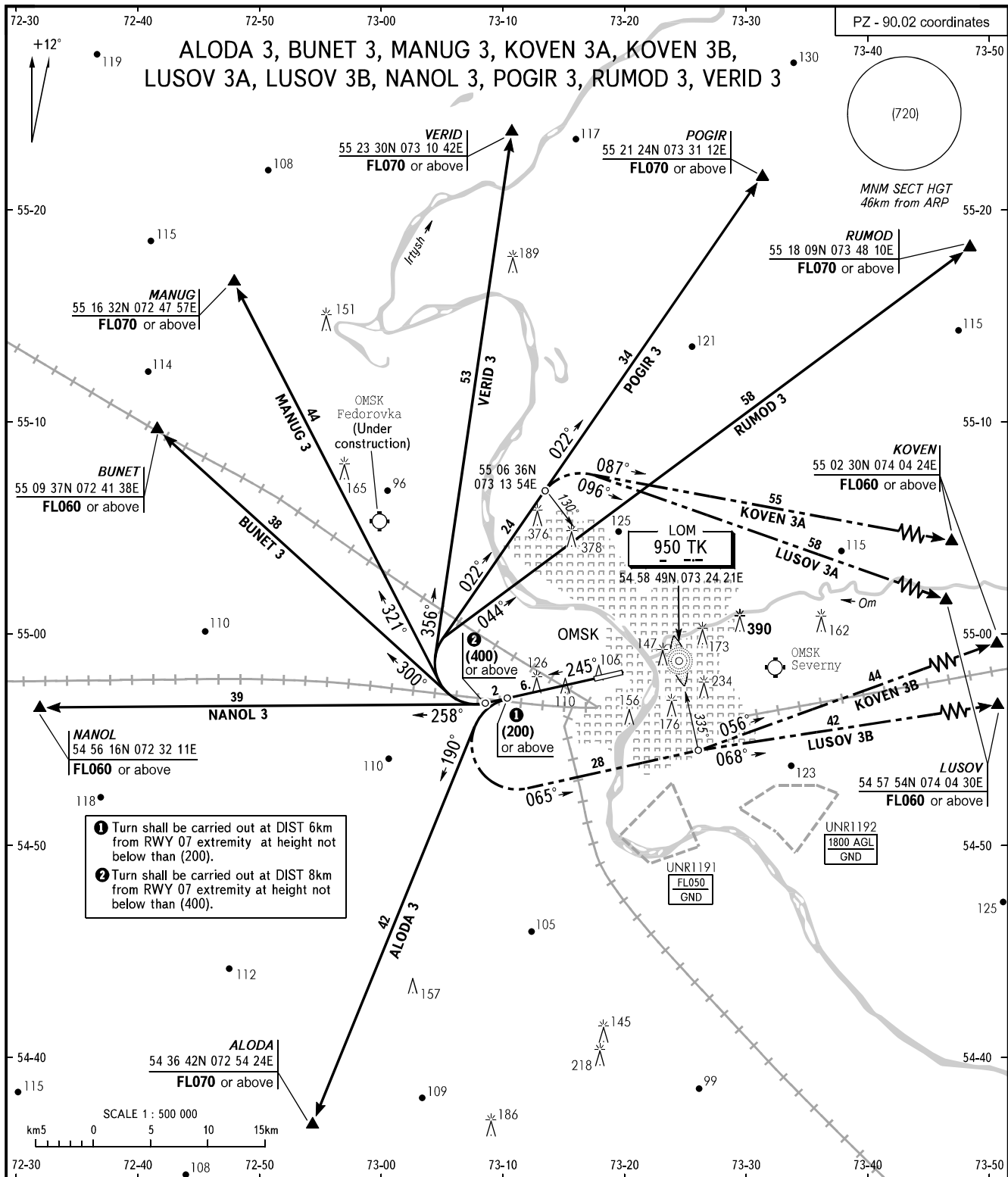


STANDARD DEPARTURE CHART
INSTRUMENT (SID) - ICAO

TRANSITION
HEIGHT : (800)

OMSK, RUSSIA
TSENTRALNY
RWY 25



- 1 Turn shall be carried out at DIST 6km from RWY 07 extremity at height not below than (200).
- 2 Turn shall be carried out at DIST 8km from RWY 07 extremity at height not below than (400).

START 119.000
RADAR 119.000
APPROACH 131.200

WARNING
Take-off shall be carried out using noise abatement procedure for the area according to the Aeroplane Flight Manual.

BEARINGS AND TRACKS ARE MAGNETIC
ALTITUDES, HEIGHTS AND ELEVATIONS ARE IN METRES
DISTANCES ARE IN KILOMETRES