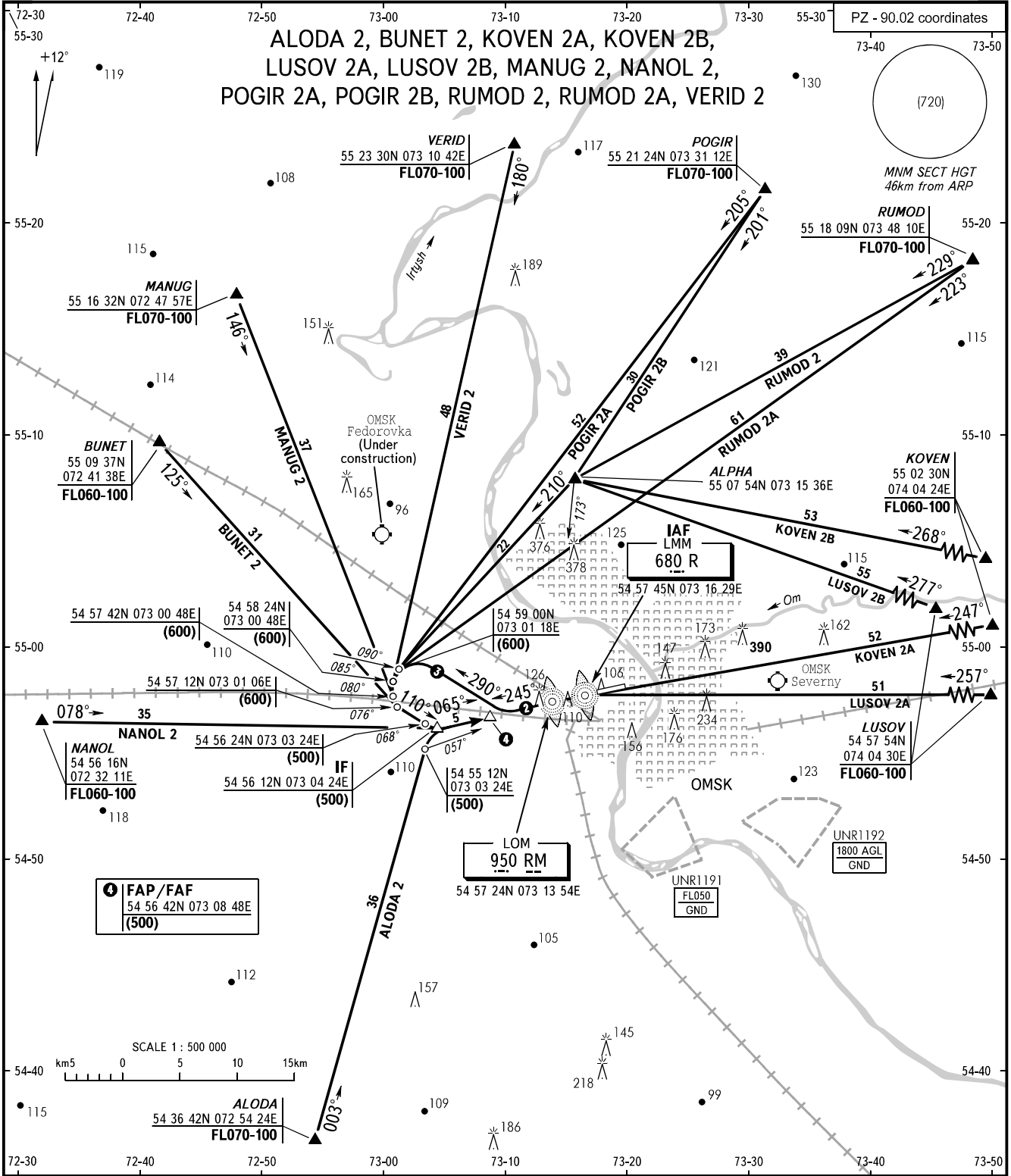


STANDARD ARRIVAL CHART
INSTRUMENT (STAR) - ICAO

OMSK, RUSSIA
TSENTRALNY
RWY 07

TRANSITION
LEVEL : ①



APPROACH 131.200
RADAR 119.000
START 119.000

- ① TRANSITION LEVEL:
- FL050 when atmospheric pressure is 751mm mercury column or above;
- FL060 when atmospheric pressure is 750-724mm mercury column;
- FL070 when atmospheric pressure is 723mm mercury column or less.
- ② For CAT A, B ACFT - 1min 30sec.
For CAT C, D ACFT - 1min.
- ③ For all CAT ACFT - 1min 15sec.

WARNING:
1. Crossing FL at CRP NANOL is by coordination with ATS unit during flight operation at OMSK (Maryanovka) AD.
2. Arrival from CRP KOVEN and LUSOV is allowed only when there are no flights at OMSK (Severny) AD.

BEARINGS AND TRACKS ARE MAGNETIC
ALTITUDES, HEIGHTS AND ELEVATIONS ARE IN METRES
DISTANCES ARE IN KILOMETRES

CHANGE: COM