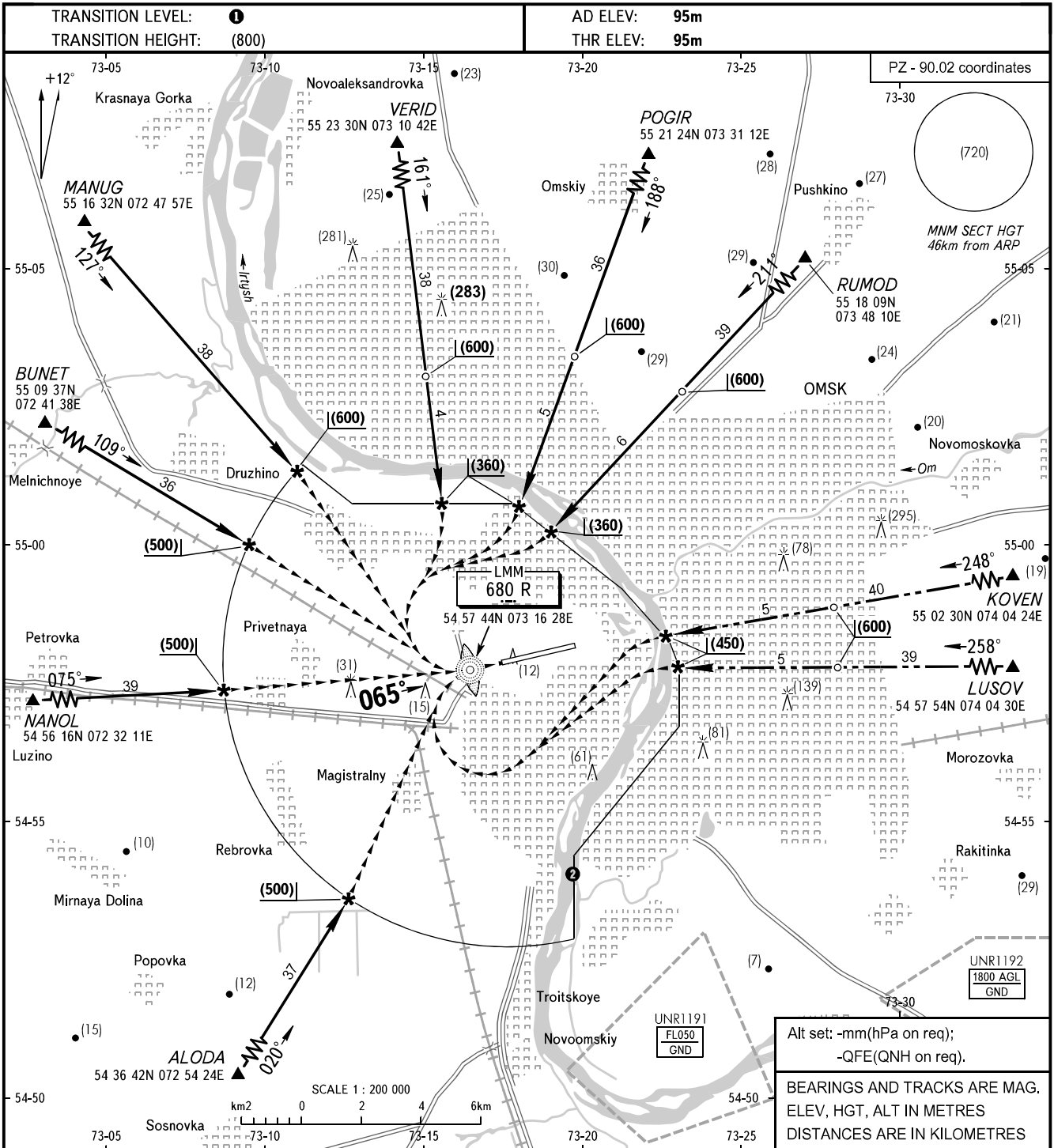


**VISUAL  
APPROACH  
CHART - ICAO**

RADAR	119.000
START	119.000

**OMSK, RUSSIA  
TSENTRALNY  
RWY 07**



- ① **TRANSITION LEVEL:**
- FL050 when atmospheric pressure is 751mm mercury column or above;
  - FL060 when atmospheric pressure is 750-724mm mercury column;
  - FL070 when atmospheric pressure is 723mm mercury column or less.
- ② Visual manoeuvring to the east of limiting line is **PROHIBITED**.

- WARNING**
1. Arrival from CRP KOVEN and LUSOV is allowed only when there are no flights at OMSK (Severny) AD.
  2. If visual reference to the RWY is lost, at any point of approach carry out turn towards LMM climbing to (600).
  3. The radius of visual manoeuvring (circling) area for all ACFT categories: A, B, C, D - 9790m.

ACFT CAT		A	B	C	D	D-widebody
MET conditions	MDH, m	300	300	330	330	
	Cloud base, m	350	350	430	430	
	Visibility, m	3000	3000	5000	5000	

CHANGE: New chart