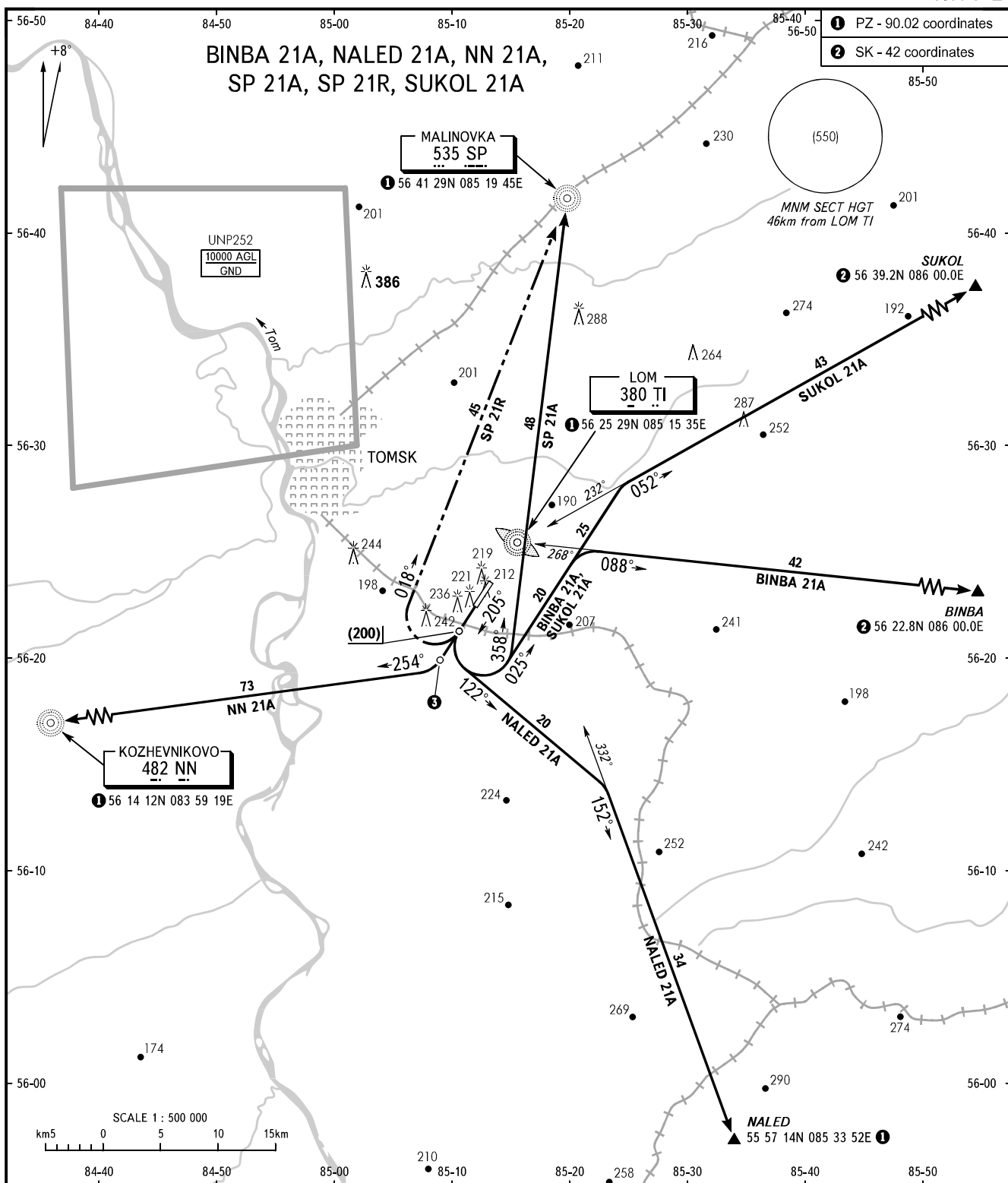


STANDARD DEPARTURE CHART  
INSTRUMENT (SID) - ICAO

TRANSITION  
HEIGHT: (700)

TOMSK, RUSSIA  
BOGASHEVO  
RWY 21



- ① PZ - 90.02 coordinates
- ② SK - 42 coordinates

TOMSK KRUG 127.300

③ NN 21A - the initial turn shall be carried out at DIST 5.5km (56 19.9N 085 09.0E ②) from RWY extremity.

**WARNING**  
FL for passing the entry points on ATS routes shall be assigned by ATC.

BEARINGS AND TRACKS ARE MAGNETIC  
ALTITUDES, HEIGHTS AND ELEVATIONS ARE IN METRES  
DISTANCES ARE IN KILOMETRES

CHANGE: NALED 21A