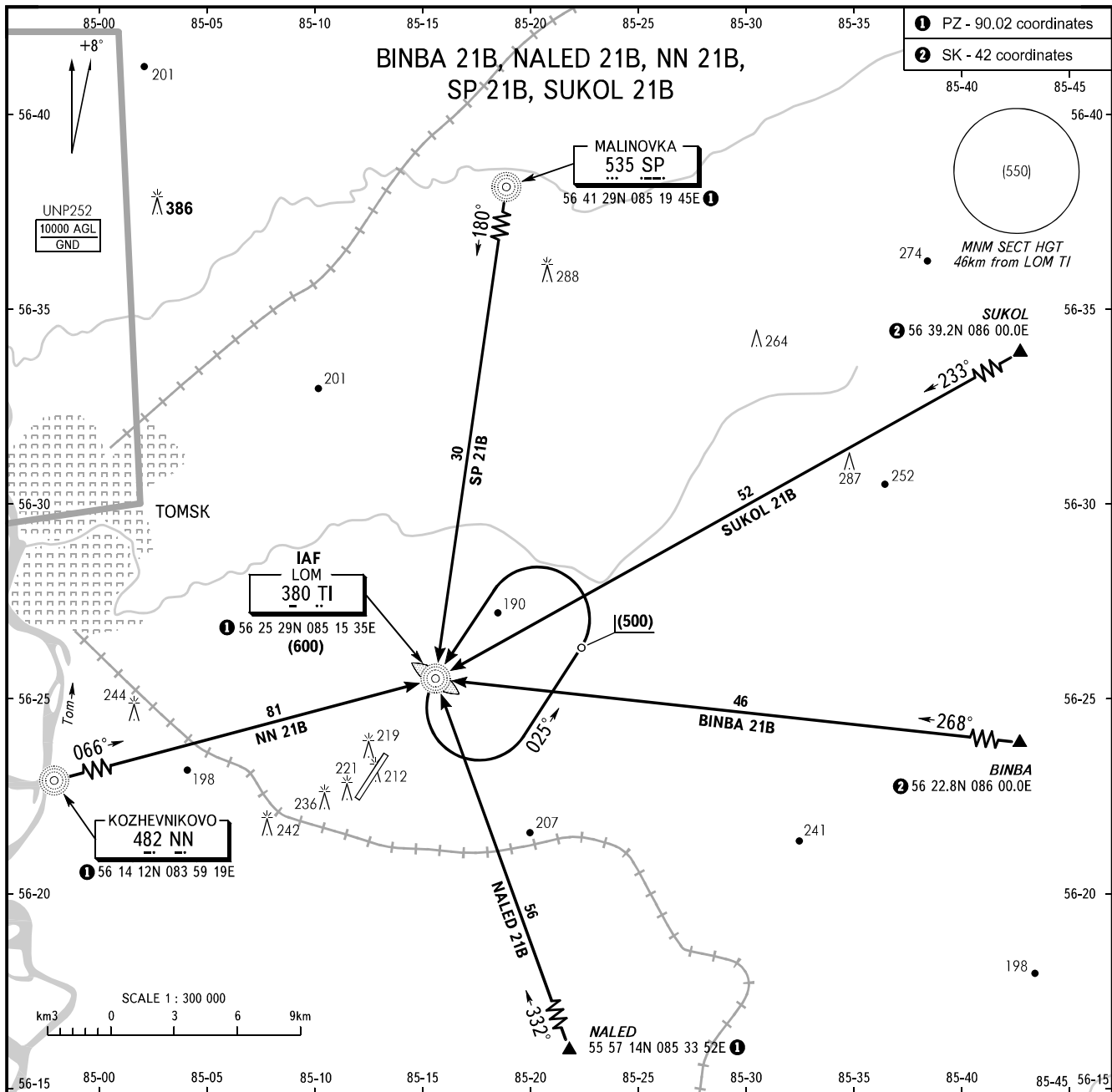


STANDARD ARRIVAL CHART
INSTRUMENT (STAR) - ICAO

TOMSK, RUSSIA
BOGASHEVO
RWY 21

TRANSITION
LEVEL : **3**



STAR	ROUTE
SP 21B	Proceed to final turn point of instrument approach procedures "W" for straight-in approach. It is allowed to carry out straight-in approach if transition level is reached before DIST 27km from RWY 21 extremity, otherwise the approach shall be carried out via LOM TI according to instrument approach procedures "Z".
BINBA 21B, SUKOL 21B	Proceed to LOM TI. After passing LOM TI turn LEFT onto track 025° and fly for 2min (CAT A, B ACFT) or for 1min 30sec (CAT C, D ACFT), then turn LEFT to carry out approach according to instrument approach procedures "Z". When radar control is provided - proceed to final turn point.
NALED 21B	Proceed to LOM TI. After passing LOM TI carry out instrument approach procedures "X": CAT A, B ACFT shall proceed on track 007° for 2min; CAT C, D ACFT shall proceed on track 347° for 1min 30sec, then turn RIGHT to carry out approach. When radar control is provided - proceed to final turn point.
NN 21B	Proceed to LOM TI. After passing LOM TI carry out instrument approach procedures "Y": CAT A, B ACFT shall proceed on track 043° for 2min; CAT C, D ACFT shall proceed on track 063° for 1min 30sec, then turn LEFT to carry out approach.

TOMSK KRUG 127.300

3 TRANSITION LEVEL:
 - FL040 when atmospheric pressure is 743mm mercury column or above;
 - FL050 when atmospheric pressure is less than 743mm mercury column.

WARNING
 FL for passing the exit points on ATS routes shall be assigned by ATC.

BEARINGS AND TRACKS ARE MAGNETIC
 ALTITUDES, HEIGHTS AND ELEVATIONS ARE IN METRES
 DISTANCES ARE IN KILOMETRES

AIRAC AMDT 10/13

Federal Air Transport Agency

CHANGE: New chart