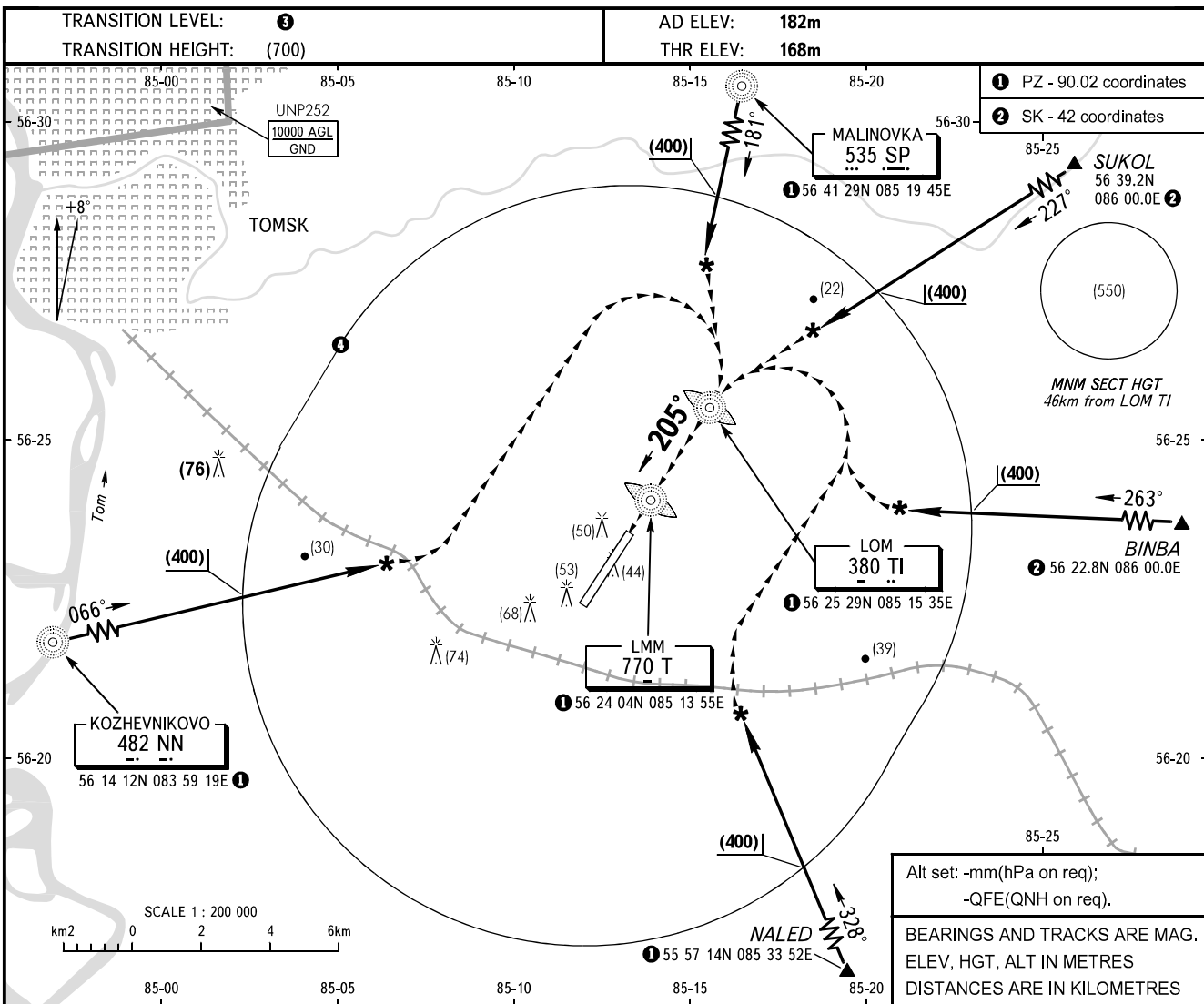


VISUAL
APPROACH
CHART - ICAO

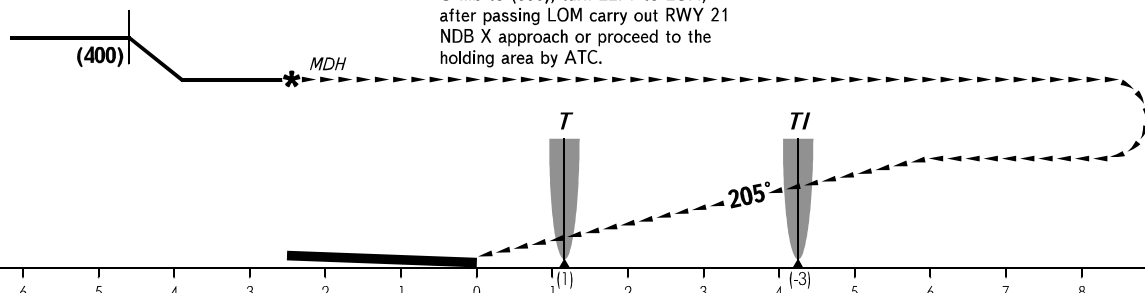
TOMSK KRUG 127.300

TOMSK, RUSSIA
BOGASHEVO
CIRCLING RWY 21



MISSED APPROACH

Climb to (600), turn LEFT to LOM, after passing LOM carry out RWY 21 NDB X approach or proceed to the holding area by ATC.



OCA/H		A	B	C	D	D-widebody
Visual Manoeuvring (Circling) Area						

3 TRANSITION LEVEL:
- FL040 when atmospheric pressure is 743mm mercury column or above;
- FL050 when atmospheric pressure is less than 743mm mercury column.
4 The radius of 10km is the boundary of visual manoeuvring area.

WARNING
In case of LMM failure the approach to the boundary of visual manoeuvring area shall be carried out by LOM.

ACFT CAT		A	B	C	D	D-widebody
MET conditions	MDH, m	150	150	180	210	300
	Cloud base, m	200	200	280	310	400
	Visibility, m	1600	2500	3000	4000	5000

CHANGE: New chart