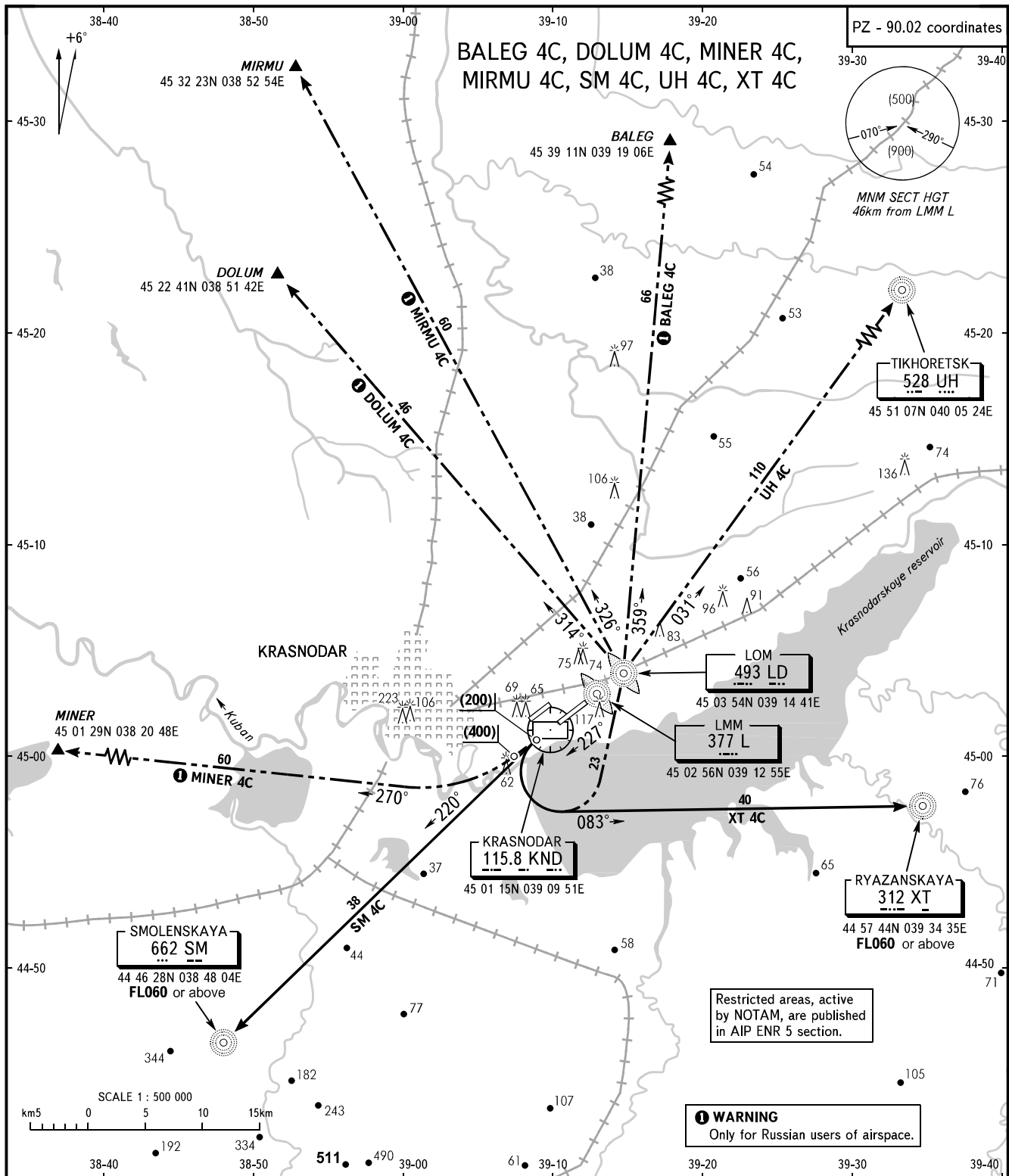


STANDARD DEPARTURE CHART
INSTRUMENT (SID) - ICAO

TRANSITION
HEIGHT : (900)

KRASNODAR, RUSSIA
PASHKOVSKIY
RWY 23L



TOWER **118.200**
RADAR **121.300**
APPROACH **129.600 127.700**

- WARNING:**
1. Proceed along XT 4C route with climb gradient of not less than 3.9% up to FL060.
 2. Proceed along SM 4C route with climb gradient of not less than 4.2% up to FL060.

Ground speed	km/h	300	350	400	450	500	550
Climb gradient 3.3%							
Vertical speed	m/s	2.7	3.2	3.6	4.1	4.6	5.0
Climb gradient 3.9%							
Vertical speed	m/s	3.2	3.8	4.3	4.9	5.4	6.0
Climb gradient 4.2%							
Vertical speed	m/s	3.5	4.1	4.7	5.2	5.8	6.4

BEARINGS AND TRACKS ARE MAGNETIC
ALTITUDES, HEIGHTS AND ELEVATIONS ARE IN METRES
DISTANCES ARE IN KILOMETRES