

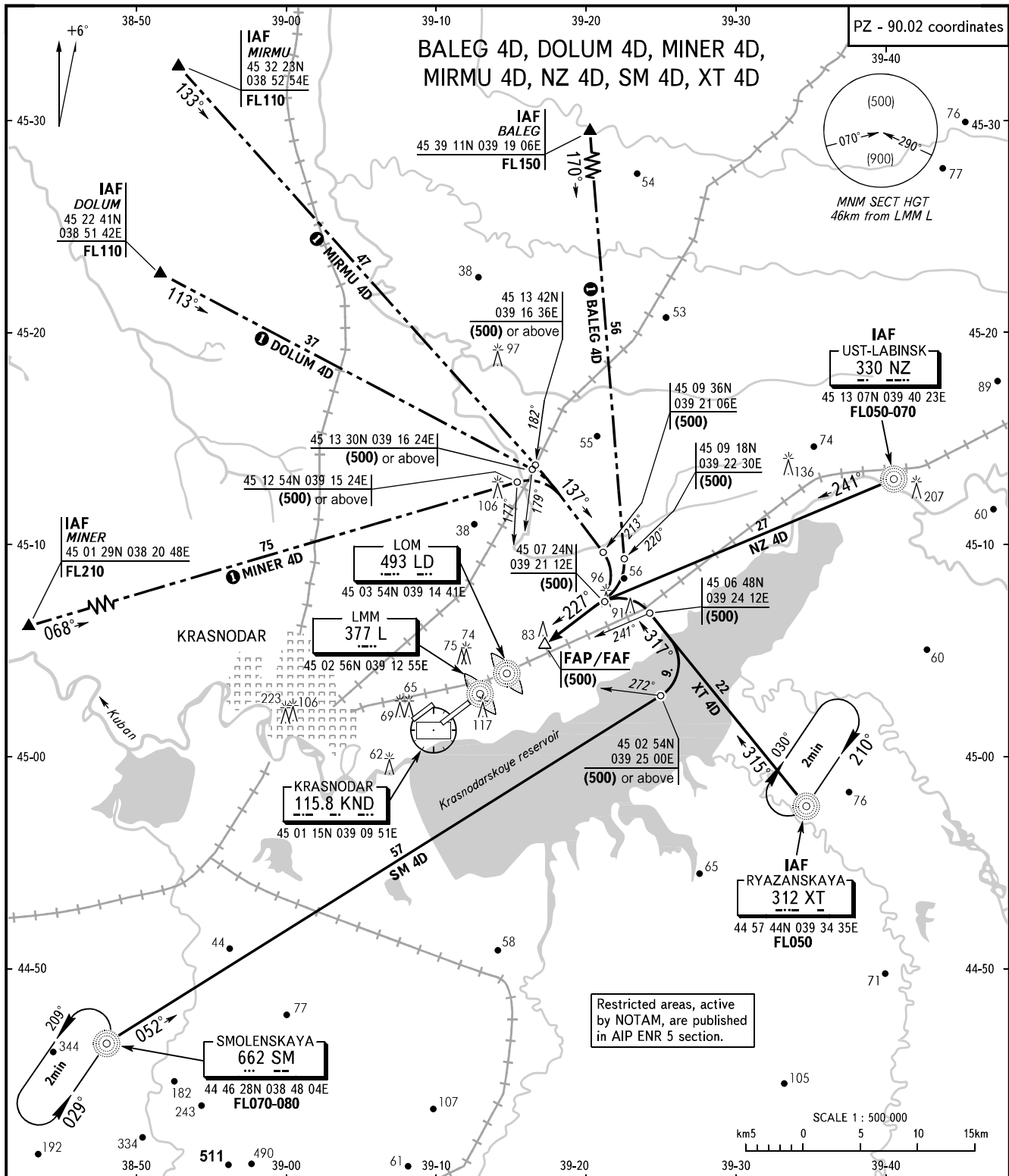
STANDARD ARRIVAL CHART
INSTRUMENT (STAR) - ICAO

TRANSITION
LEVEL : **FL050**

KRASNODAR, RUSSIA

PASHKOVSKIY

RWY 23L



APPROACH	129.600	127.700
RADAR	121.300	
TOWER	118.200	

WARNING
Only for Russian users of airspace.

BEARINGS AND TRACKS ARE MAGNETIC
ALTITUDES, HEIGHTS AND ELEVATIONS ARE IN METRES
DISTANCES ARE IN KILOMETRES