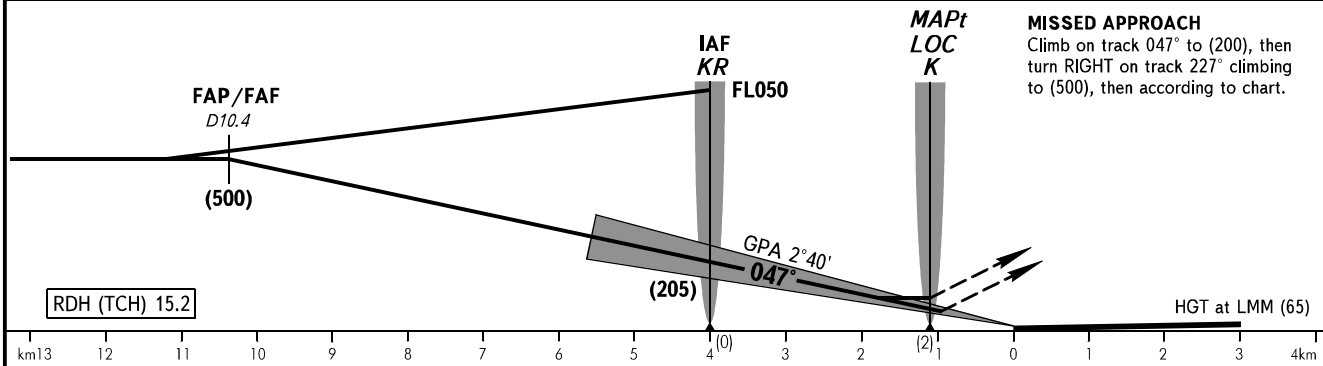
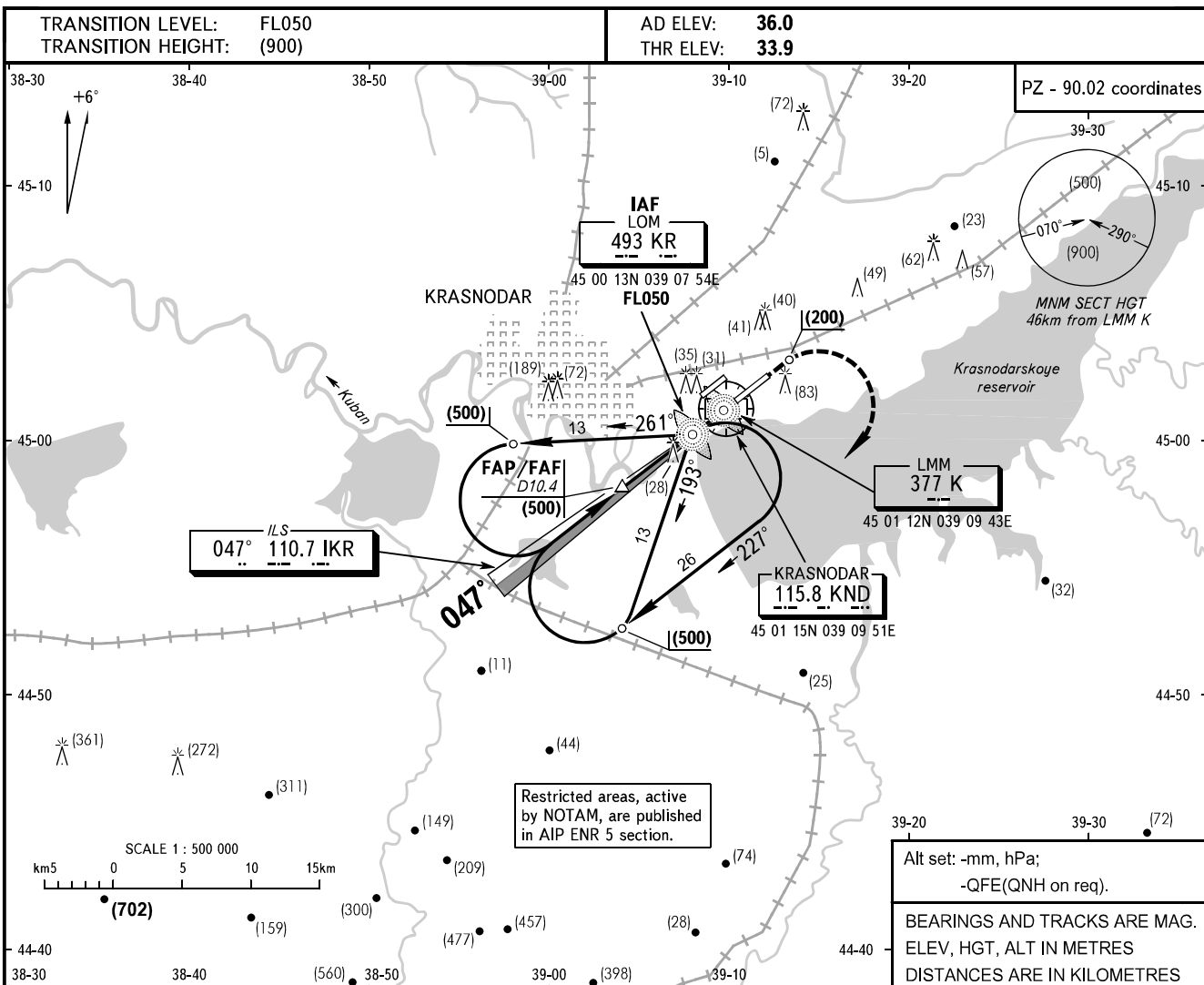


**INSTRUMENT
APPROACH
CHART - ICAO**

RADAR **121.300**
TOWER **118.200**

KRASNODAR, RUSSIA
PASHKOVSKIY
ILS, LOC RWY 05R



OCA/H		A	B	C	D
Straight-in	CAT I	76(42)	79(45)	82(48)	85(51)
	LOC	133(99)	133(99)	133(99)	133(99)
Approach					

WARNING:

1. During approach-to-land FAF is as directed by TAR controller (descending shall be commenced by controller's instruction).
2. DIST by TAR shall be given from THR.
3. MAPt is LMM K during LOC approach.

GROUND SPEED	km/h	150	180	210	240	270	300	330	360	390	420	450
LOM-THR 4030m	min:sec	1.37	1.21	1.09	1.00	0.54	0.48	0.44	0.40	0.37	0.35	0.32
RATE OF DESCENT (Grad 4.7%)	m/s	1.9	2.3	2.7	3.1	3.5	3.9	4.3	4.7	5.0	5.4	5.8

CHANGE: NIL