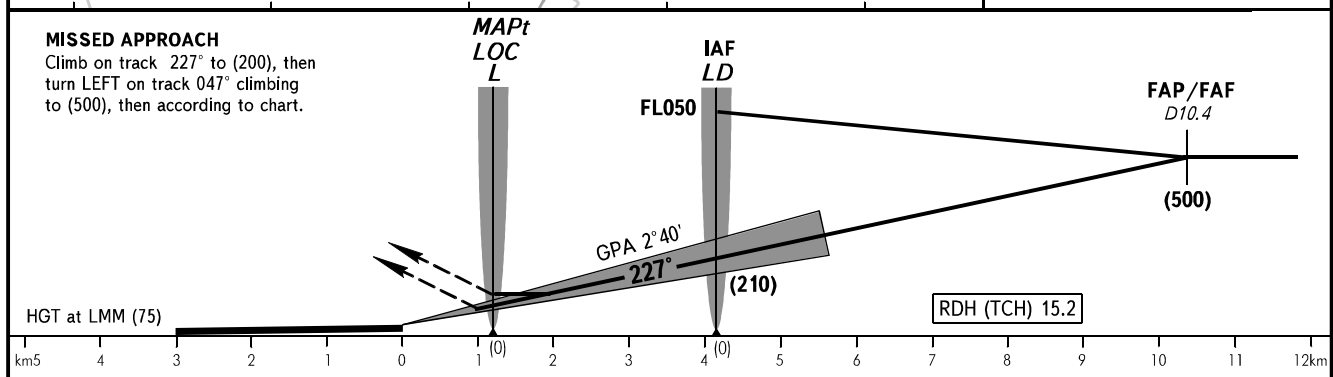
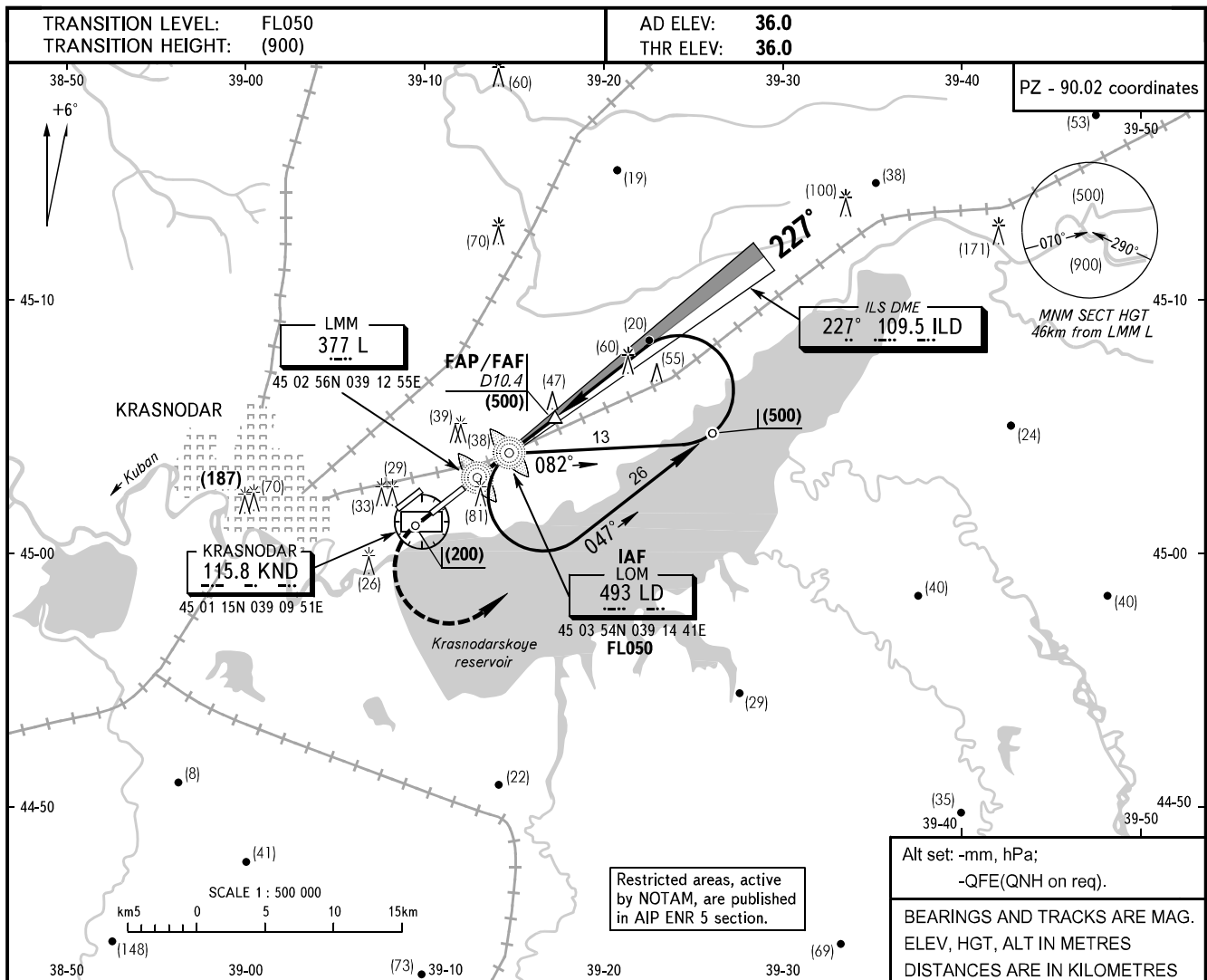


**INSTRUMENT  
APPROACH  
CHART - ICAO**

RADAR	121.300
TOWER	118.200

**KRASNODAR, RUSSIA  
PASHKOVSKIY  
ILS DME, LOC RWY 23L**



OCA/H		A	B	C	D							
Straight-in	<b>CAT I</b>	80(44)	83(47)	86(50)	91(55)							
	<b>LOC</b>	140(104)	140(104)	140(104)	140(104)							
Approach												
<b>GROUND SPEED</b> km/h												
		150	180	210	240	270	300	330	360	390	420	450
<b>LOM-THR 4150m</b> min:sec												
		1.40	1.23	1.11	1.02	0.55	0.50	0.45	0.42	0.38	0.36	0.33
<b>RATE OF DESCENT (Grad 4.7%)</b> m/s												
		1.9	2.3	2.7	3.1	3.5	3.9	4.3	4.7	5.0	5.4	5.8

**WARNING:**

1. During approach-to-land FAF is as directed by TAR controller (descending shall be commenced by controller's instruction).
2. DIST by TAR shall be given from THR.
3. MAPt is LMM L during LOC approach.