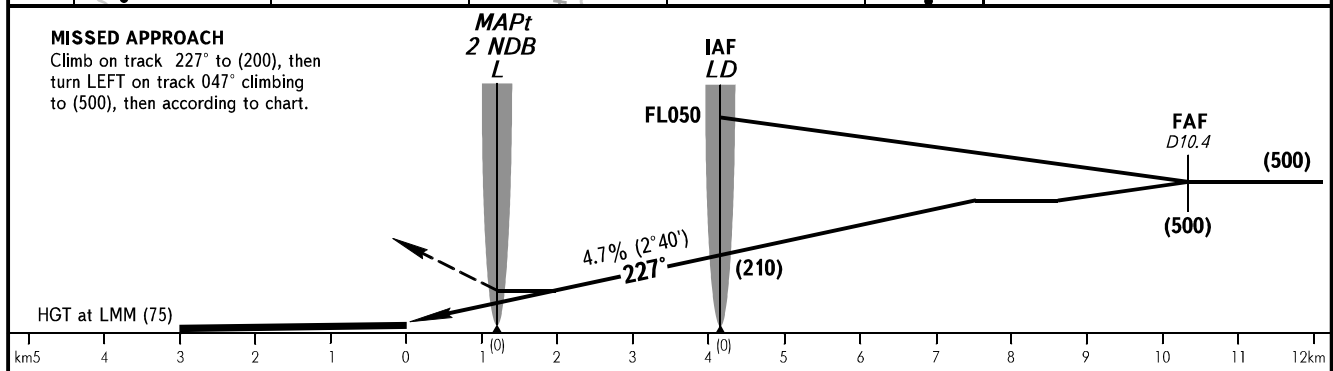
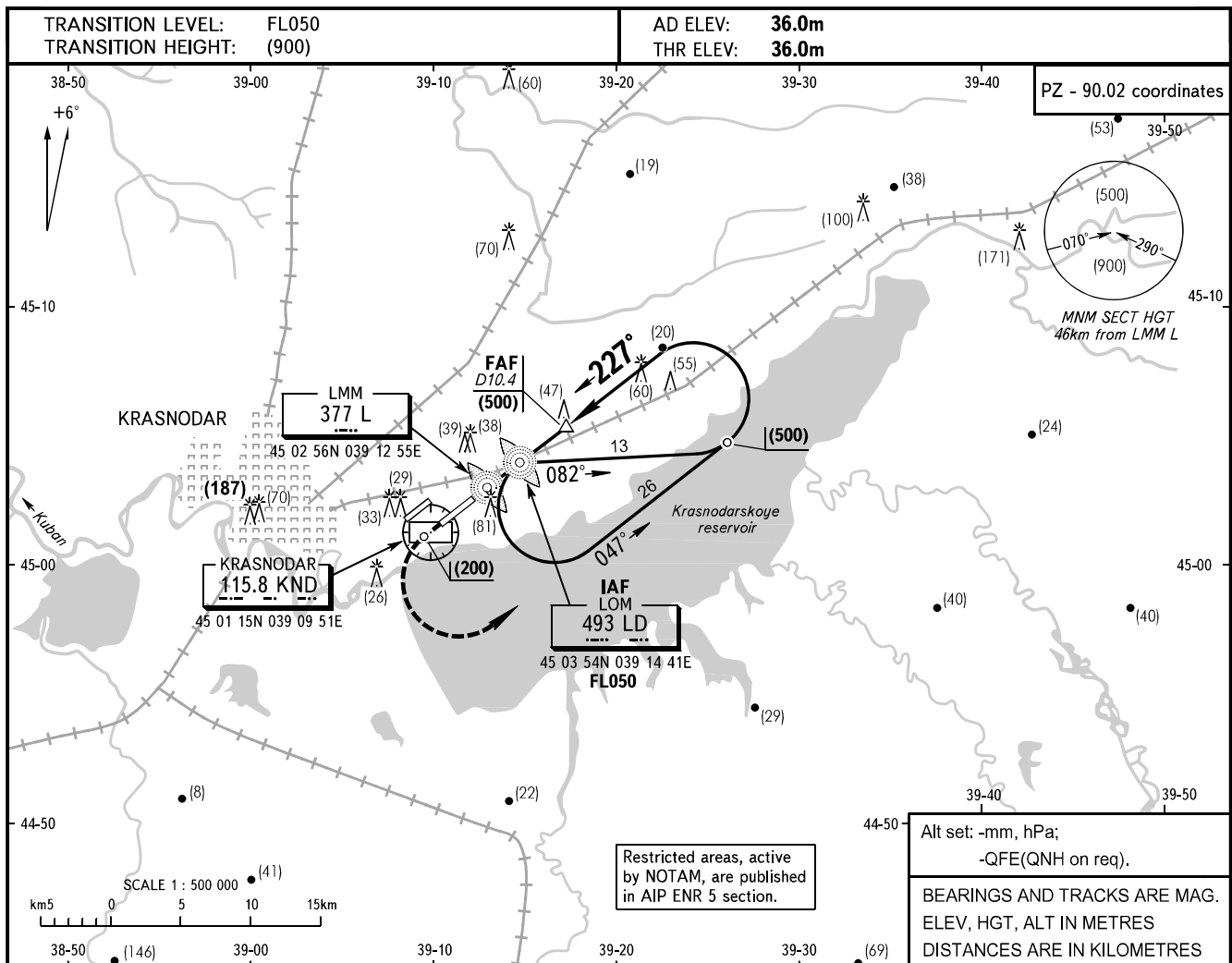


**INSTRUMENT
APPROACH
CHART - ICAO**

RADAR **121.300**
TOWER **118.200**

KRASNODAR, RUSSIA
PASHKOVSKIY
2 NDB RWY 23L



OCA/H		A	B	C	D	
Straight-in Approach	2 NDB	With FAF	142(106)	142(106)	142(106)	142(106)
		WO FAF	265(229)	265(229)	265(229)	265(229)
	LOM	With FAF	189(153)	189(153)	189(153)	189(153)
		WO FAF	265(229)	265(229)	265(229)	265(229)
	LMM	With FAF	189(153)	189(153)	189(153)	189(153)
		WO FAF	289(253)	289(253)	289(253)	289(253)

WARNING:
1. During approach-to-land FAF is as directed by TAR controller (descending shall be commenced by controller's instruction).
2. DIST by TAR shall be given from THR.

GROUND SPEED	km/h	150	180	210	240	270	300	330	360	390	420	450
LOM-THR 4150m	min:sec	1.40	1.23	1.11	1.02	0.55	0.50	0.45	0.41	0.38	0.36	0.33
RATE OF DESCENT	m/s	1.9	2.3	2.7	3.1	3.5	3.9	4.3	4.7	5.0	5.4	5.8