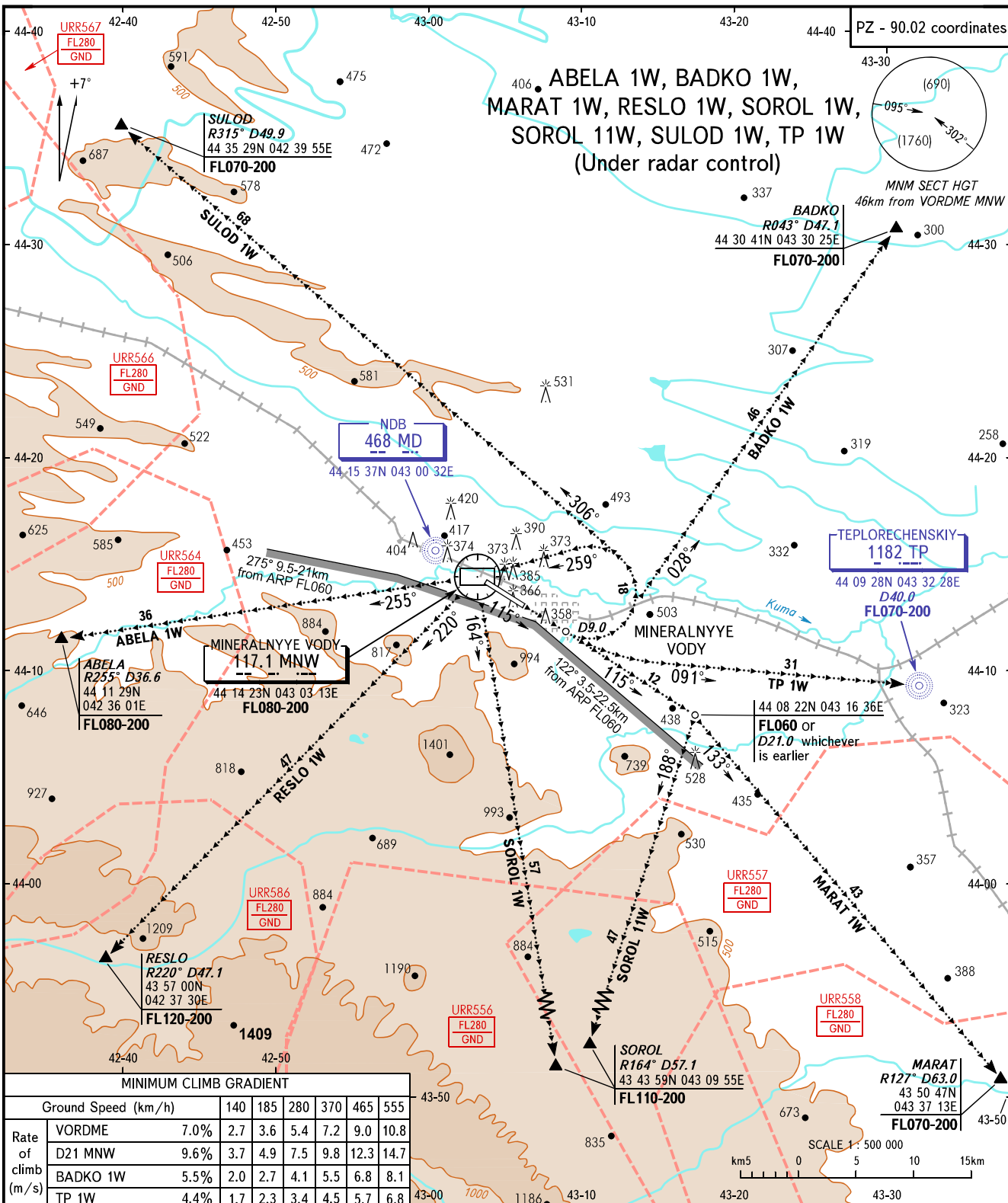


STANDARD DEPARTURE CHART
INSTRUMENT (SID) - ICAO

TRANSITION
HEIGHT : (900)

MINERALNYYE VODY, RUSSIA
MINERALNYYE VODY
RWY 12



| MINIMUM CLIMB GRADIENT | | | | | | | | |
|------------------------|----------|------|-----|-----|-----|-----|------|------|
| | | 140 | 185 | 280 | 370 | 465 | 555 | |
| Rate of climb (m/s) | VORDME | 7.0% | 2.7 | 3.6 | 5.4 | 7.2 | 9.0 | 10.8 |
| | D21 MNW | 9.6% | 3.7 | 4.9 | 7.5 | 9.8 | 12.3 | 14.7 |
| | BADKO 1W | 5.5% | 2.0 | 2.7 | 4.1 | 5.5 | 6.8 | 8.1 |
| | TP 1W | 4.4% | 1.7 | 2.3 | 3.4 | 4.5 | 5.7 | 6.8 |

START **128.000**
KRUG **120.700**
APPROACH **119.300**

- WARNING:**
1. Take-off shall be carried out using noise abatement procedure for the area according to the Aeroplane Flight Manual.
 2. ACFT unable to maintain the required climb gradient shall advise ATS unit about it and get other instructions.
 3. After climbing to (120) immediately contact Mineralnyye Vody-Krug on 120.700.

BEARINGS AND TRACKS ARE MAGNETIC
ALTITUDES, HEIGHTS AND ELEVATIONS ARE IN METRES
DISTANCES ARE IN KILOMETRES

CHANGE: NIL