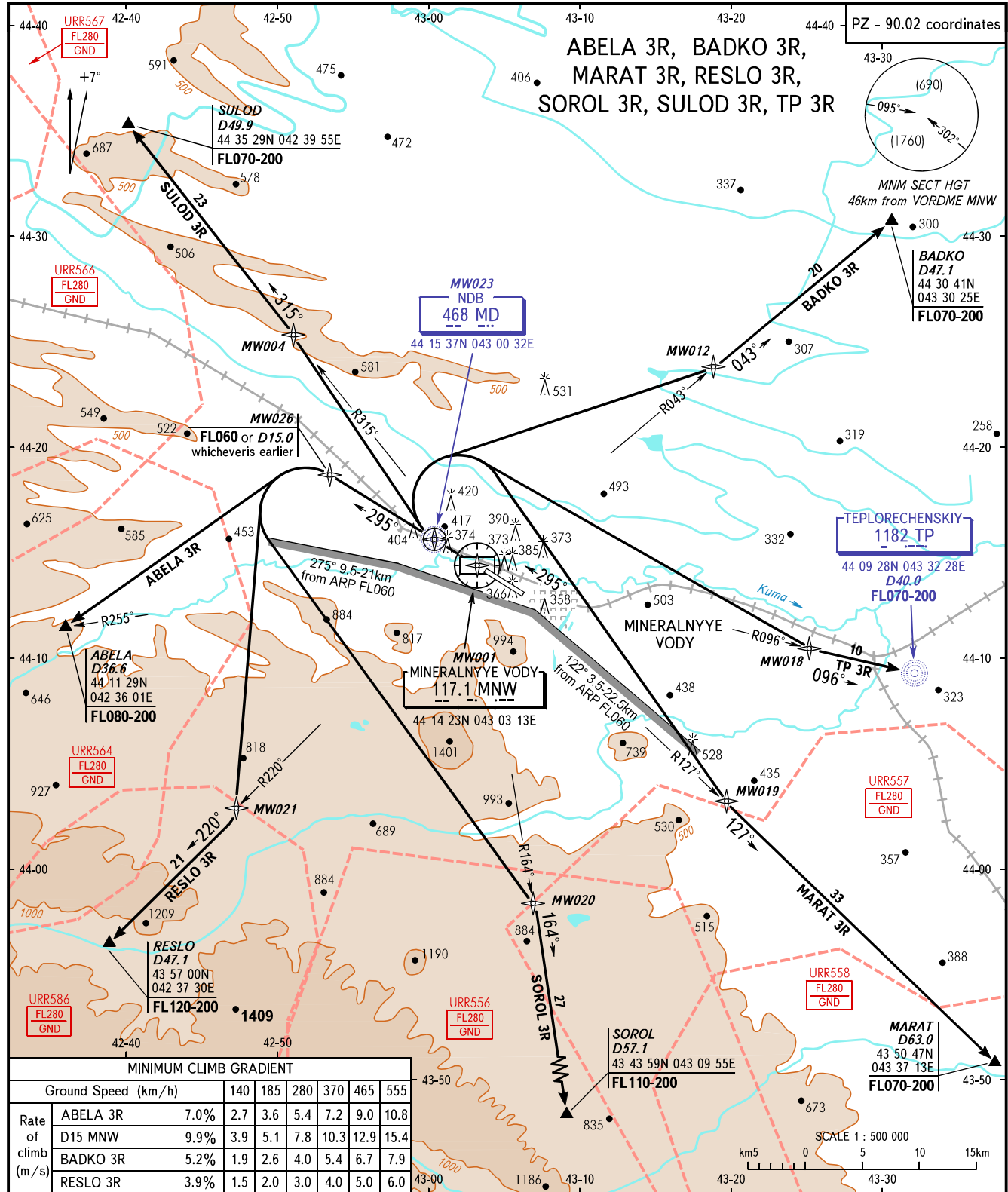


STANDARD DEPARTURE CHART
INSTRUMENT (SID) - ICAO

TRANSITION
HEIGHT : (900)

MINERALNYYE VODY, RUSSIA
MINERALNYYE VODY
RNAV RWY 30



		MINIMUM CLIMB GRADIENT						
		Ground Speed (km/h)						
		140	185	280	370	465	555	
Rate of climb (m/s)	ABELA 3R	7.0%	2.7	3.6	5.4	7.2	9.0	10.8
	D15 MNW	9.9%	3.9	5.1	7.8	10.3	12.9	15.4
	BADKO 3R	5.2%	1.9	2.6	4.0	5.4	6.7	7.9
	RESLO 3R	3.9%	1.5	2.0	3.0	4.0	5.0	6.0

START	128.000
KRUG	120.700
APPROACH	119.300

- WARNING:**
1. Take-off shall be carried out using noise abatement procedure for the area according to the Aeroplane Flight Manual.
 2. ACFT unable to maintain the required climb gradient shall advise ATS unit about it and get other instructions.
 3. After climbing to (120) immediately contact Mineralnyye Vody-Krug on 120.700.

BEARINGS AND TRACKS ARE MAGNETIC
ALTITUDES, HEIGHTS AND ELEVATIONS ARE IN METRES
DISTANCES ARE IN KILOMETRES

CHANGE: NIL