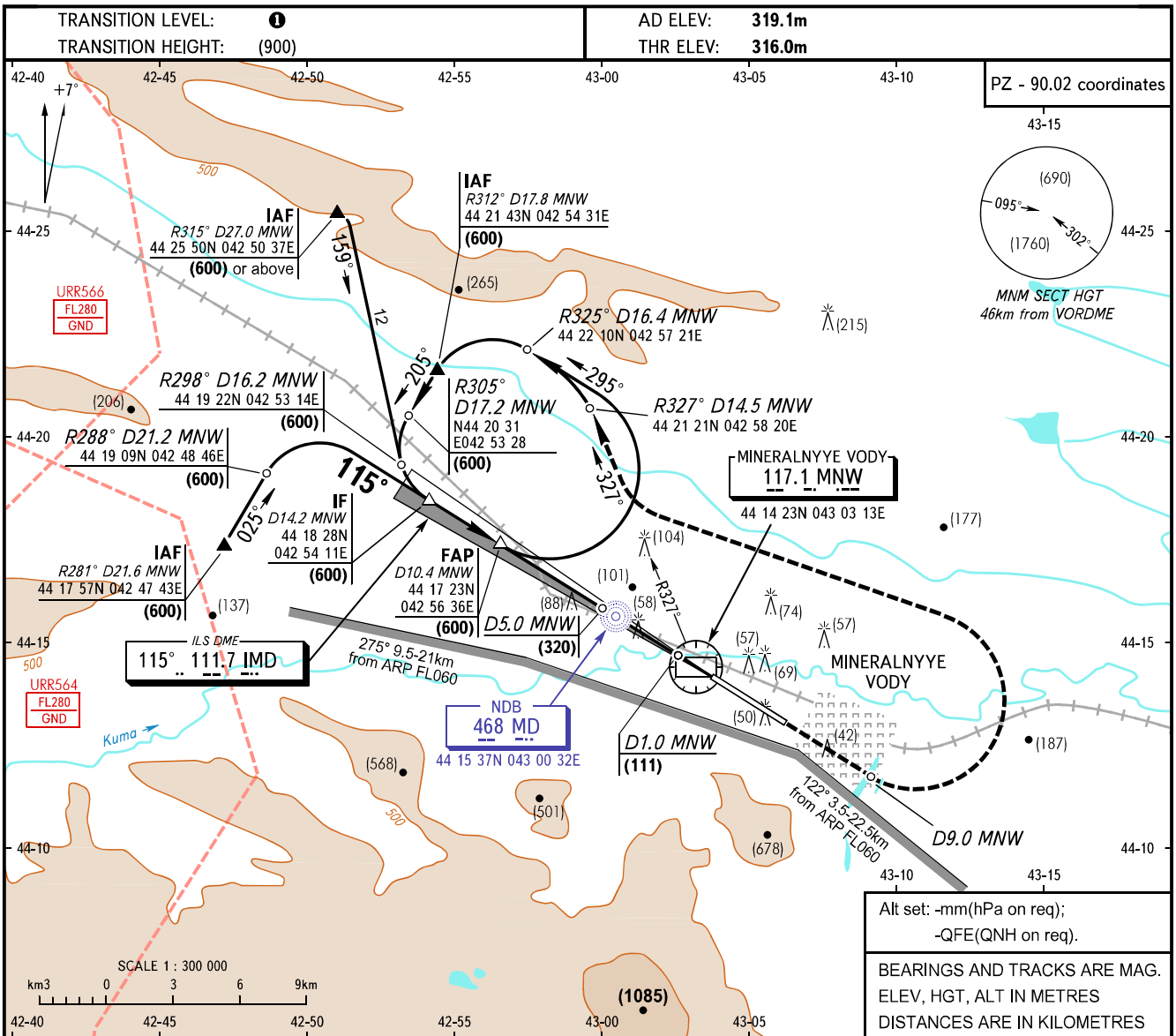


**INSTRUMENT  
APPROACH  
CHART - ICAO**

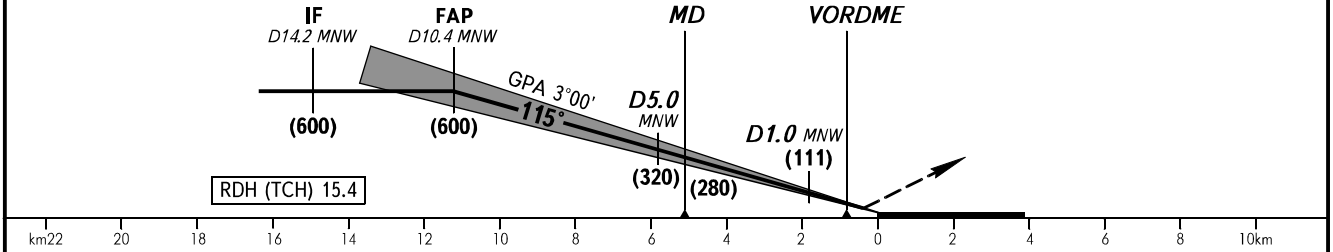
APPROACH	<b>119.3</b>
KRUG	<b>120.7</b>
START	<b>128.0</b>

**MINERALNYE VODY, RUSSIA**  
MINERALNYE VODY  
ILS VORDME RWY 12



Alt set: -mm(hPa on req);  
-QFE(QNH on req).  
BEARINGS AND TRACKS ARE MAG.  
ELEV, HGT, ALT IN METRES  
DISTANCES ARE IN KILOMETRES

**MISSED APPROACH**  
Climb on track 115° to D 9.0 MNW, then turn LEFT to intercept R327° MNW climbing to (600), then by ATS unit instruction.



OCA/H		A	B	C	D						
Straight-in	<b>CAT II</b>	332(16)	335(19)	339(23)	343(27)						
	<b>CAT I</b>	360(44)	363(47)	366(50)	371(55)						
Approach											
GROUND SPEED		km/h	150	180	210	240	270	300	330	360	390
FAF - THR 11200m		min:sec	4.29	3.44	3.12	2.48	2.29	2.14	2.02	1.52	1.43
RATE OF DESCENT (Grad 5.2%)		m/s	2.2	2.6	3.0	3.5	3.9	4.3	4.8	5.2	5.7

**1** TRANSITION LEVEL:  
- FL060 when atmospheric pressure is 704mm mercury column or above;  
- FL070 when atmospheric pressure is less than 704mm mercury column.