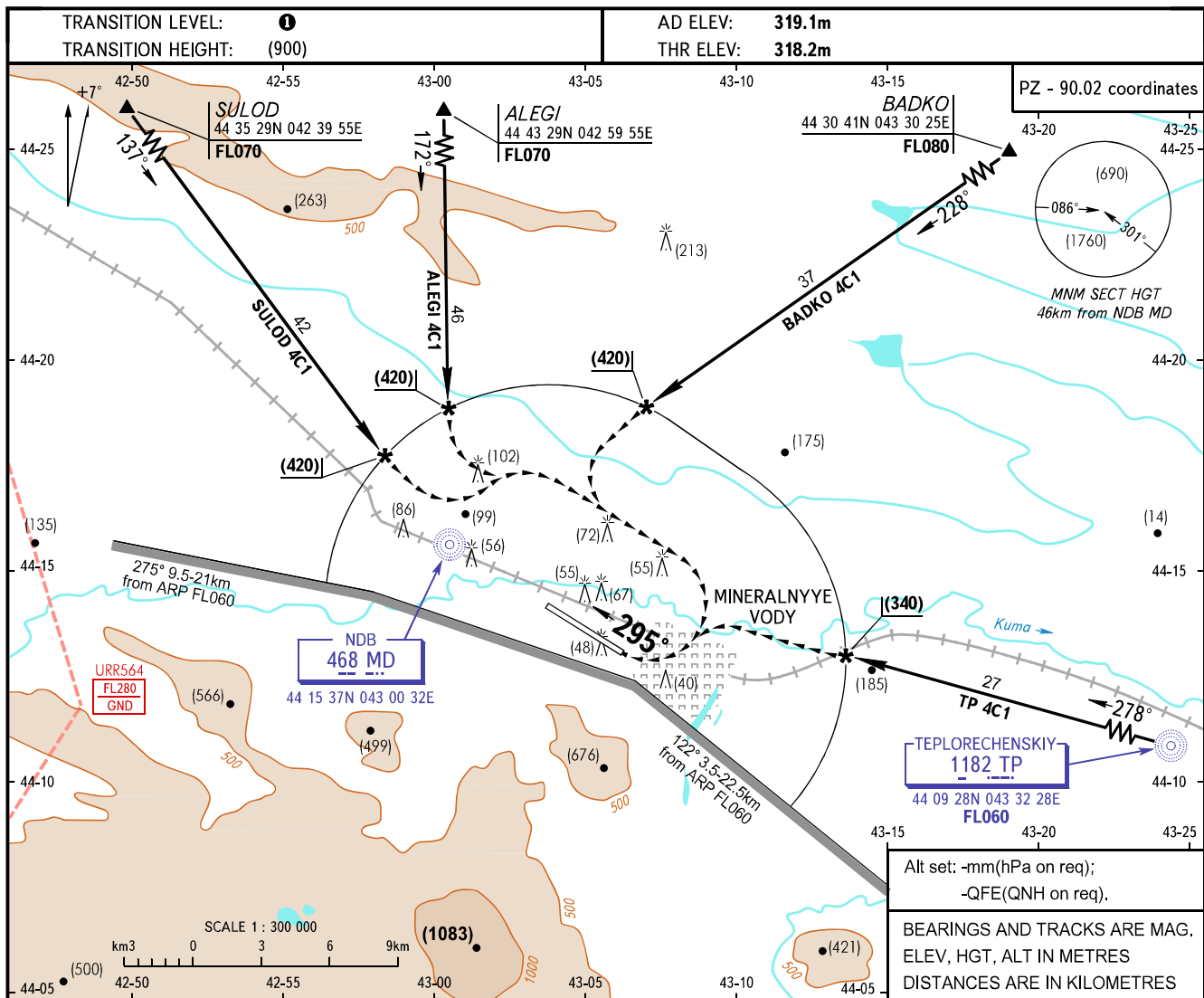


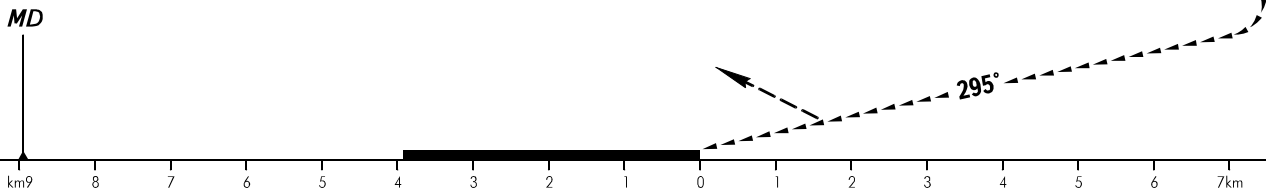
VISUAL
APPROACH
CHART - ICAO

APPROACH	119.3
KRUG	120.7
START	128.0

MINERALNYYE VODY, RUSSIA
MINERALNYYE VODY
CIRCLING RWY 30



MISSED APPROACH
Climb on track 295° to NDB MD, then turn RIGHT on track 115° climbing to (600), then as directed by ATC.



OCA/H		A	B	C	D
Visual Manoeuvring (Circling) Area		788(470)	788(470)	838(520)	838(520)
ACFT CAT		A	B	C	D
MET conditions	MDH, m	160	170	220	270
	Cloud base, m	470	470	520	520
	Visibility, m	5000	5000	5000	5000

1 TRANSITION LEVEL:
- FL060 when atmospheric pressure is 704mm mercury column or above;
- FL070 when atmospheric pressure is less than 704mm mercury column.

WARNING:
1. Visual manoeuvring south of the aerodrome is prohibited.
2. Establish on final approach track at DIST not closer than 4000m (D9.0) to RWY30 at height not less than (240)m.