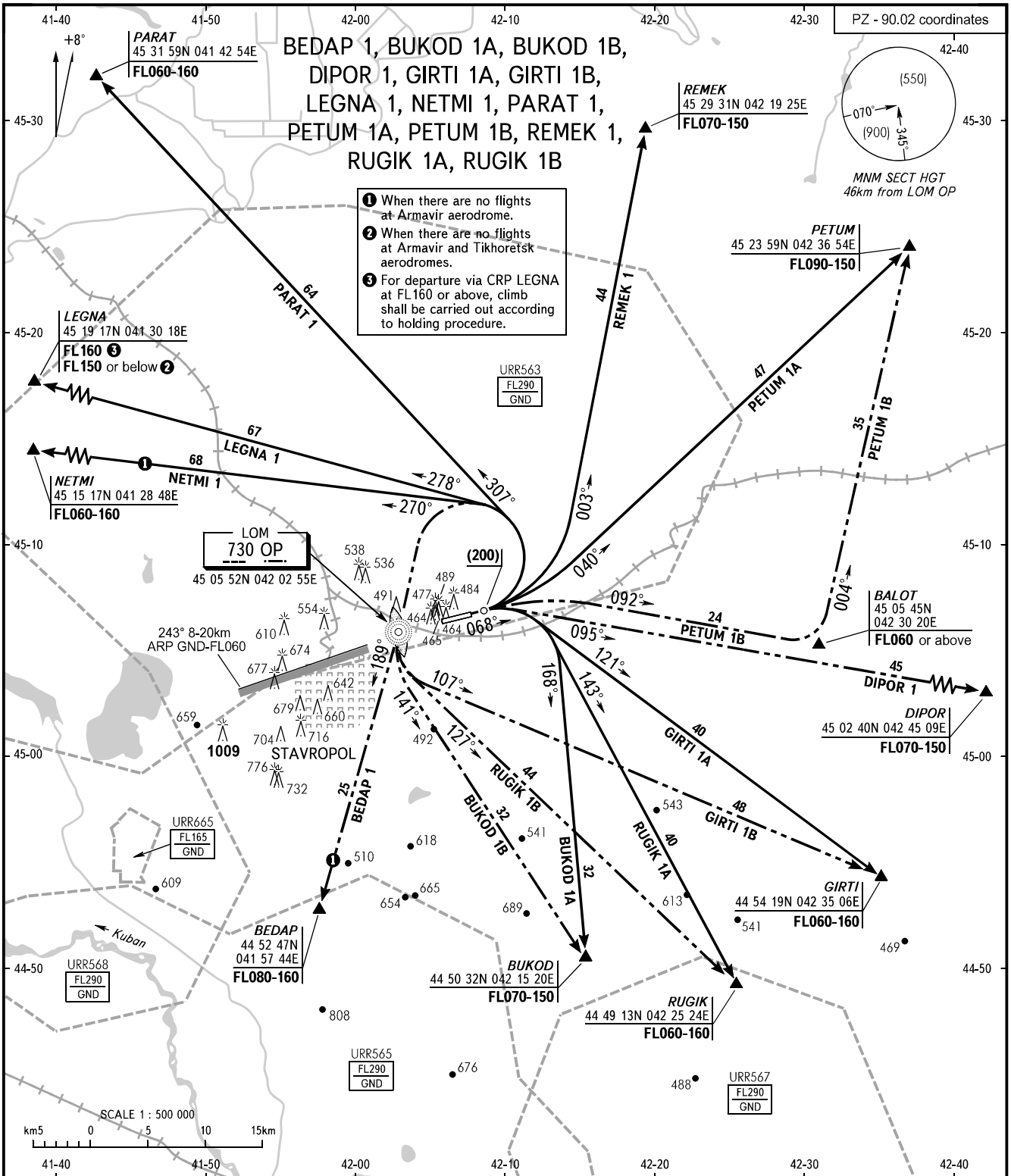


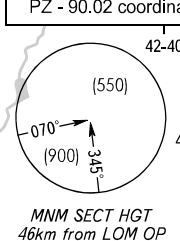
STANDARD DEPARTURE CHART  
INSTRUMENT (SID) - ICAO

TRANSITION  
HEIGHT : (900)

STAVROPOL, RUSSIA  
SHPAKOVSKOYE  
RWY 07



- ① When there are no flights at Armavir aerodrome.
- ② When there are no flights at Armavir and Tikhoretsk aerodromes.
- ③ For departure via CRP LEGNA at FL160 or above, climb shall be carried out according to holding procedure.



APPROACH 120.300

- WARNING:**
1. For departure via SID BUKOD 1A and GIRTI 1A, take-off shall be carried out using noise abatement procedure for the area according to the Aeroplane Flight Manual.
  2. The minimum climb gradient is 4.4% for SID PETUM 1A.

CHANGE: New chart

BEARINGS AND TRACKS ARE MAGNETIC  
ALTITUDES, HEIGHTS AND ELEVATIONS ARE IN METRES  
DISTANCES ARE IN KILOMETRES