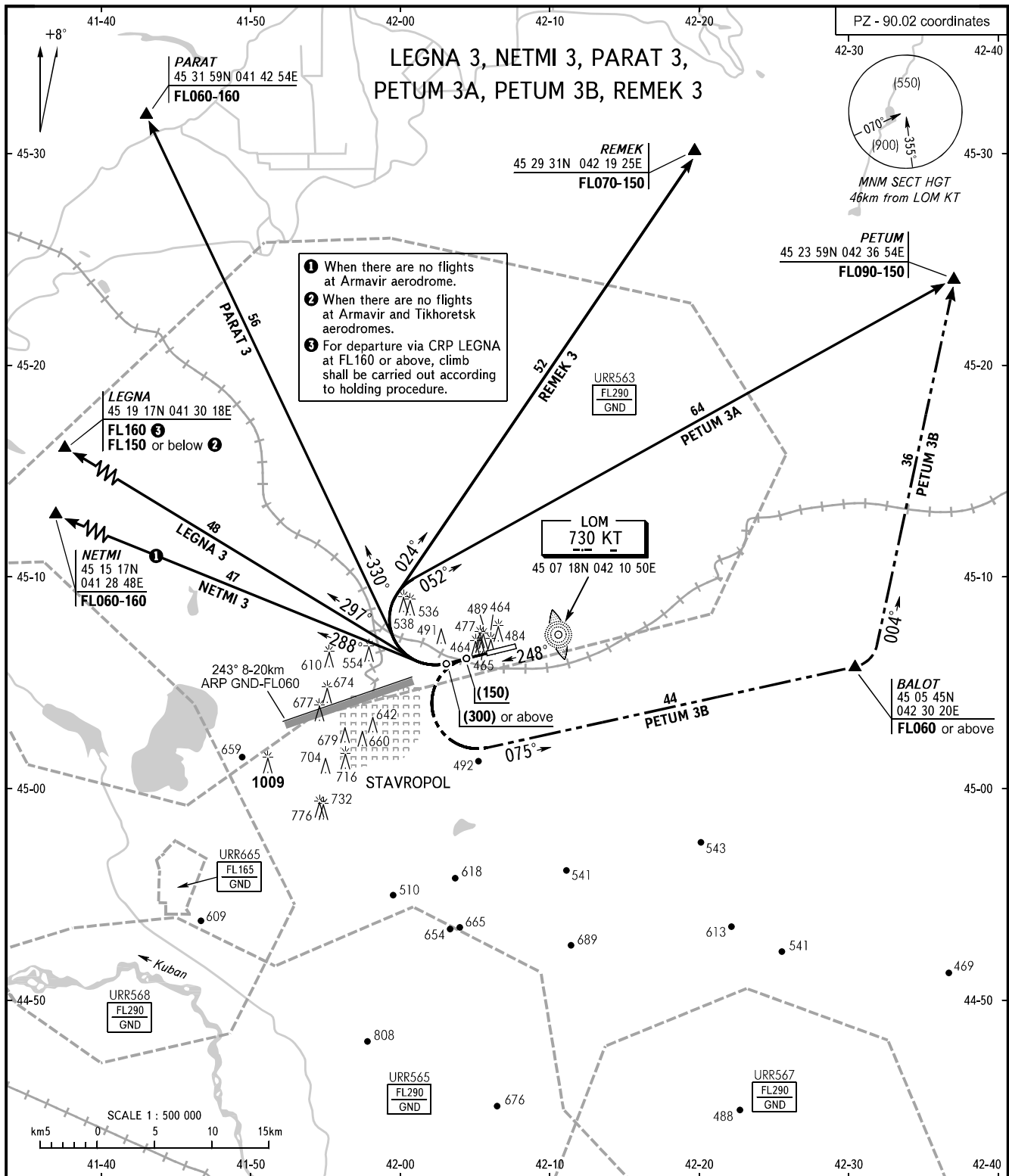


STANDARD DEPARTURE CHART
INSTRUMENT (SID) - ICAO

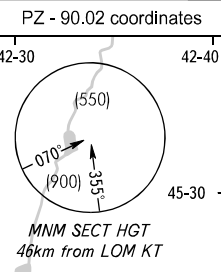
TRANSITION
HEIGHT : (900)

STAVROPOL, RUSSIA
SHPAKOVSKOYE
RWY 25



1 When there are no flights at Armavir aerodrome.
2 When there are no flights at Armavir and Tikhoretsk aerodromes.
3 For departure via CRP LEGNA at FL160 or above, climb shall be carried out according to holding procedure.

LOM
730 KT
45 07 18N 042 10 50E



TOWER 120.900
APPROACH 120.300

WARNING:
1. Take-off shall be carried out using noise abatement procedure for the area according to the Aeroplane Flight Manual.
2. During departure along NETMI 3, LEGNA 3, PARAT 3, REMEK 3, PETUM 3A SID routes right turn shall be executed at a distance not less than 6km from RWY 07 THR (HGT (300) or above).

BEARINGS AND TRACKS ARE MAGNETIC
ALTITUDES, HEIGHTS AND ELEVATIONS ARE IN METRES
DISTANCES ARE IN KILOMETRES