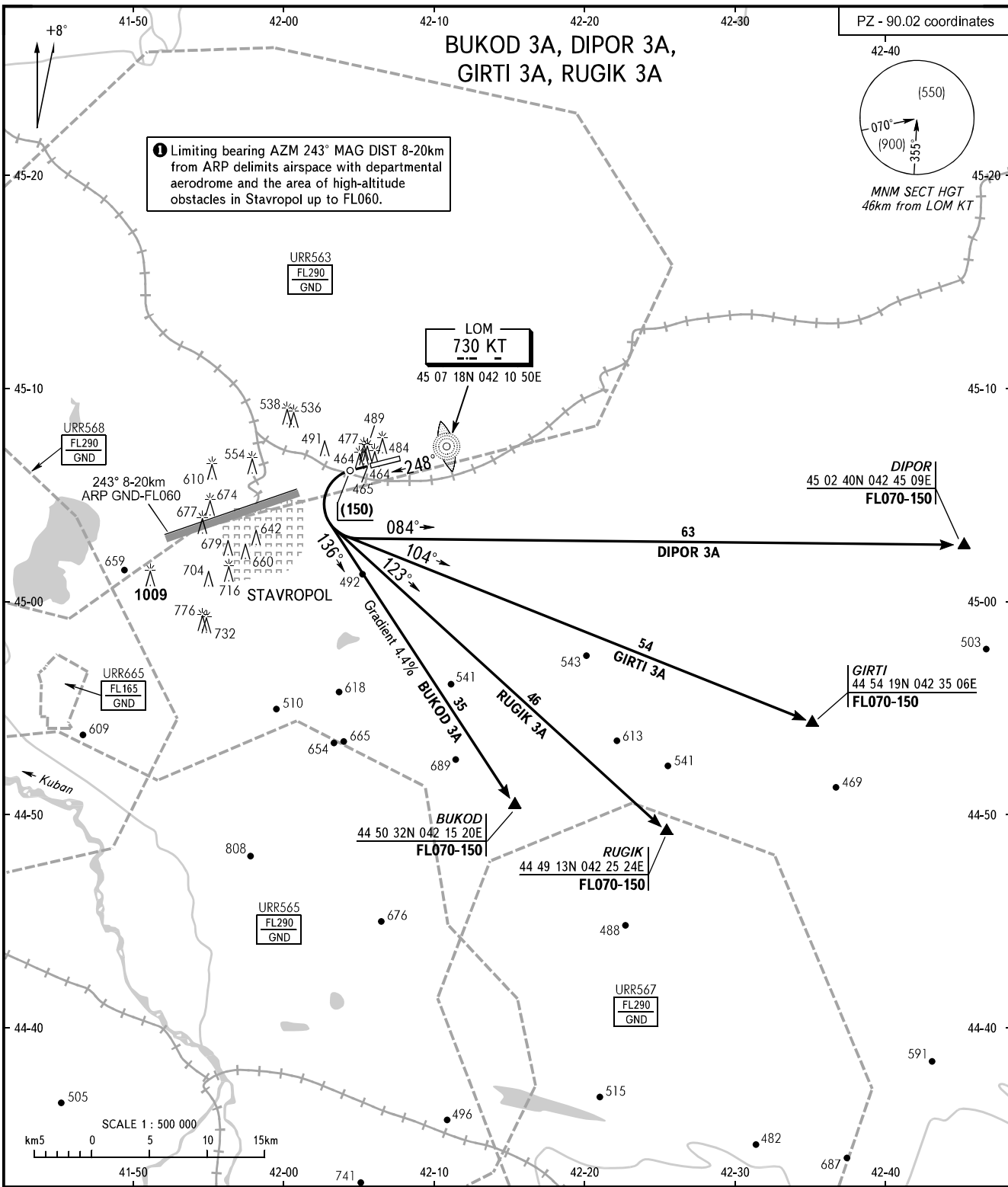


STANDARD DEPARTURE CHART
INSTRUMENT (SID) - ICAO

TRANSITION
HEIGHT : (900)

STAVROPOL, RUSSIA
SHPAKOVSKOE
RWY 25



APPROACH **120.300**

WARNING:

1. Take-off shall be carried out using noise abatement procedure for the area according to the Aeroplane Flight Manual.
2. It is allowed to proceed to CRP BUKOD, GIRTI, DIPOR, RUGIK by executing left turn with maximum distance from RWY 07 THR of not more than 7km. If unable to comply with this condition the crew shall make a right turn for departure.

BEARINGS AND TRACKS ARE MAGNETIC
ALTITUDES, HEIGHTS AND ELEVATIONS ARE IN METRES
DISTANCES ARE IN KILOMETRES