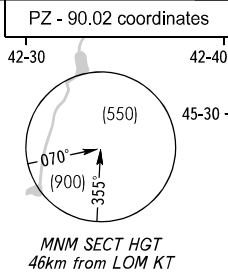
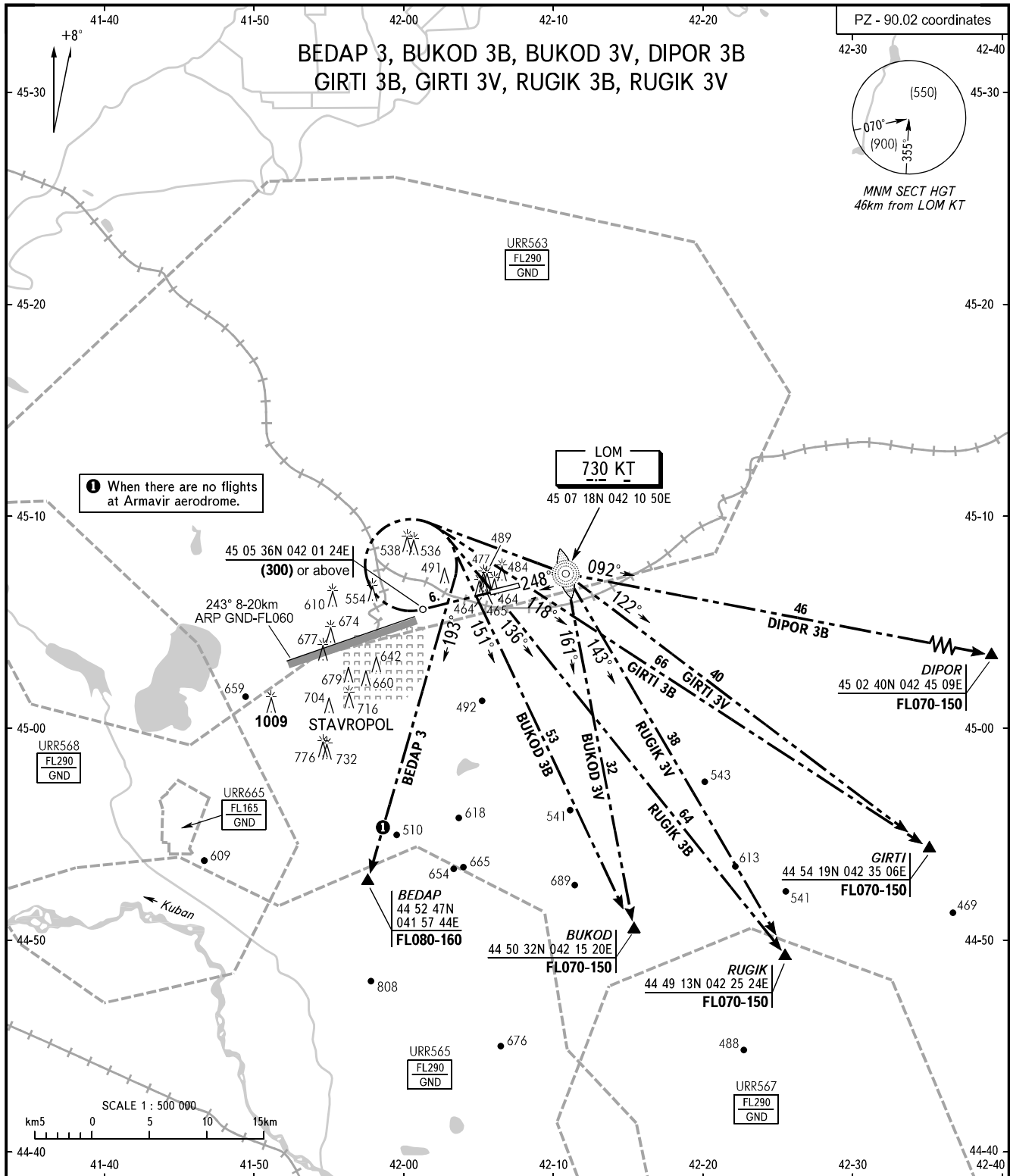


STANDARD DEPARTURE CHART
INSTRUMENT (SID) - ICAO

TRANSITION
HEIGHT : (900)

STAVROPOL, RUSSIA
SHPAKOVSKOYE
RWY 25



① When there are no flights at Armavir aerodrome.

LOM
730 KT
45 07 18N 04 21 50E

BEDAP
44 52 47N
04 15 20E
FL080-160

BUKOD
44 50 32N 04 15 20E
FL070-150

RUGIK
44 49 13N 04 25 24E
FL070-150

GIRTI
44 54 19N 04 35 06E
FL070-150

DIPOR
45 02 40N 04 45 09E
FL070-150

APPROACH 120.300

- WARNING:**
1. Take-off shall be carried out using noise abatement procedure for the area according to the Aeroplane Flight Manual.
 2. During departure along all SID routes right turn shall be executed at a distance 6km from RWY 07 THR (HGT (300) or above).

BEARINGS AND TRACKS ARE MAGNETIC
ALTITUDES, HEIGHTS AND ELEVATIONS ARE IN METRES
DISTANCES ARE IN KILOMETRES

CHANGE: New chart