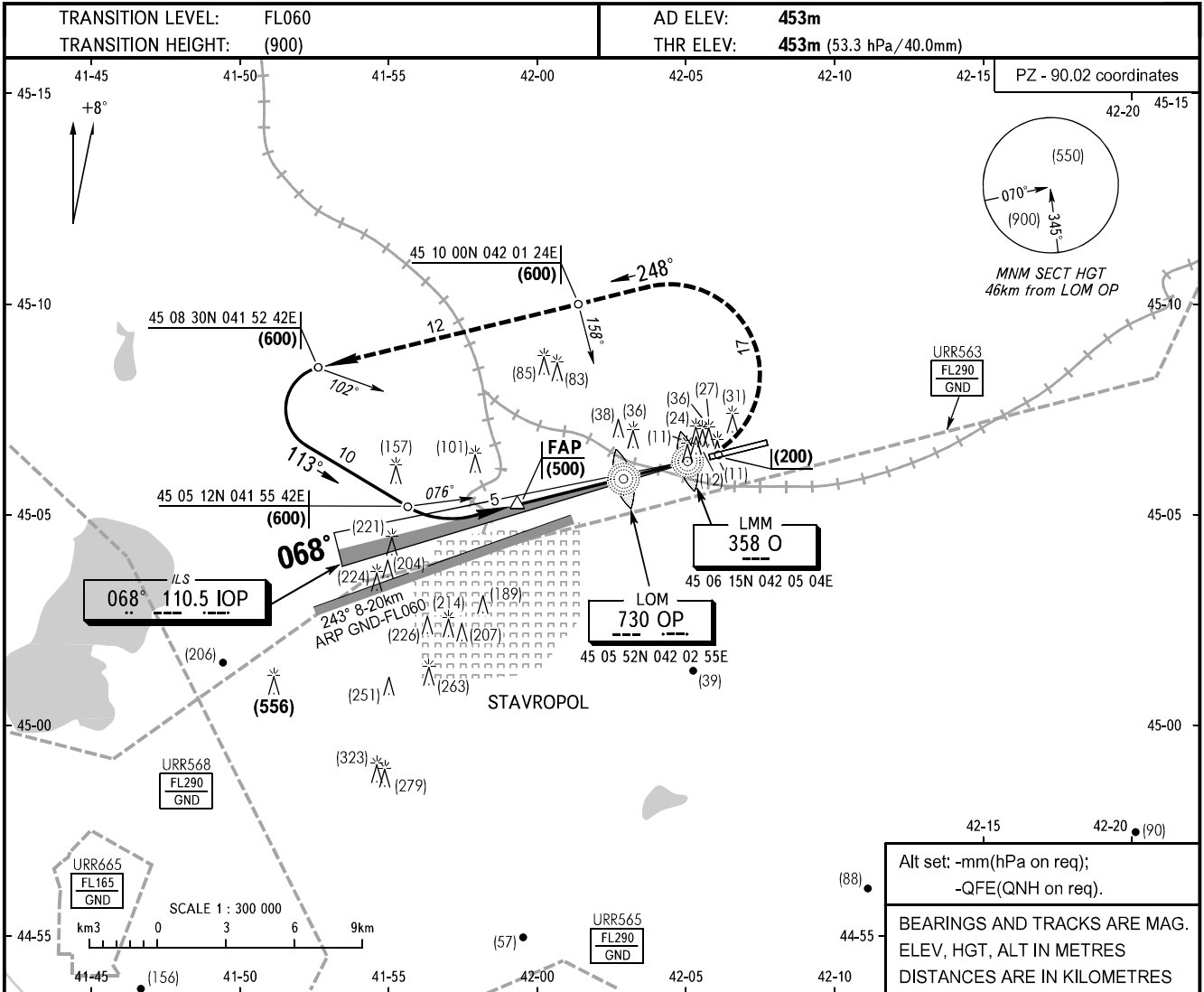


**INSTRUMENT
APPROACH
CHART - ICAO**

TOWER **120.900**

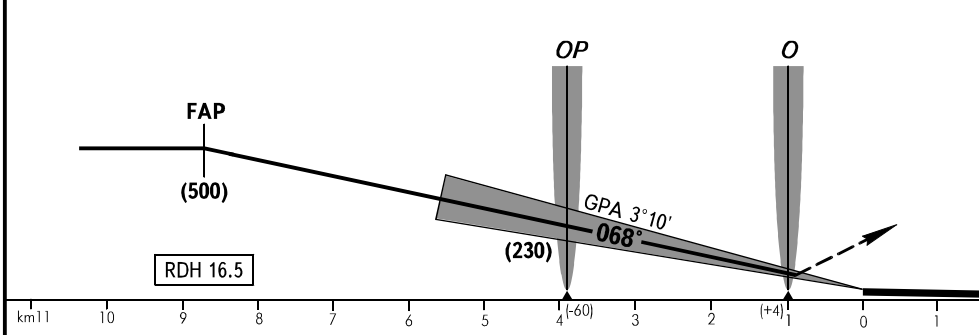
STAVROPOL, RUSSIA
SHPAKOVSKOYE
ILS RWY 07



Alt set: -mm(hPa on req);
-QFE(QNH on req).

BEARINGS AND TRACKS ARE MAG.
ELEV, HGT, ALT IN METRES
DISTANCES ARE IN KILOMETRES

MISSED APPROACH
Climb on track 068° to (200), then turn LEFT on track 248° climbing to (600), then according to chart.



| OCA/H | | A | B | C | D |
|-------------|--------------|---------|---------|---------|---------|
| Straight-in | CAT I | 495(42) | 498(45) | 501(48) | 504(51) |
| | | | | | |
| Approach | | | | | |
| | | | | | |

WARNING:

1. Turbulence with downdraughts and wind shear may be expected on final in the vicinity of base turn.
2. Ground proximity warning system may be brought into operation between LOM and LMM due to abrupt change of relief.

| | | | | | | | | | | | | |
|-----------------|---------|------|------|------|------|------|------|------|------|------|------|------|
| GROUND SPEED | km/h | 150 | 180 | 210 | 240 | 270 | 300 | 330 | 360 | 390 | 420 | 450 |
| LOM-THR 3900m | min:sec | 1.34 | 1.18 | 1.07 | 0.59 | 0.52 | 0.47 | 0.43 | 0.39 | 0.36 | 0.34 | 0.31 |
| RATE OF DESCENT | m/s | 2.2 | 2.6 | 3.1 | 3.5 | 4.0 | 4.4 | 4.8 | 5.3 | 5.7 | 6.1 | 6.6 |

CHANGE: New chart