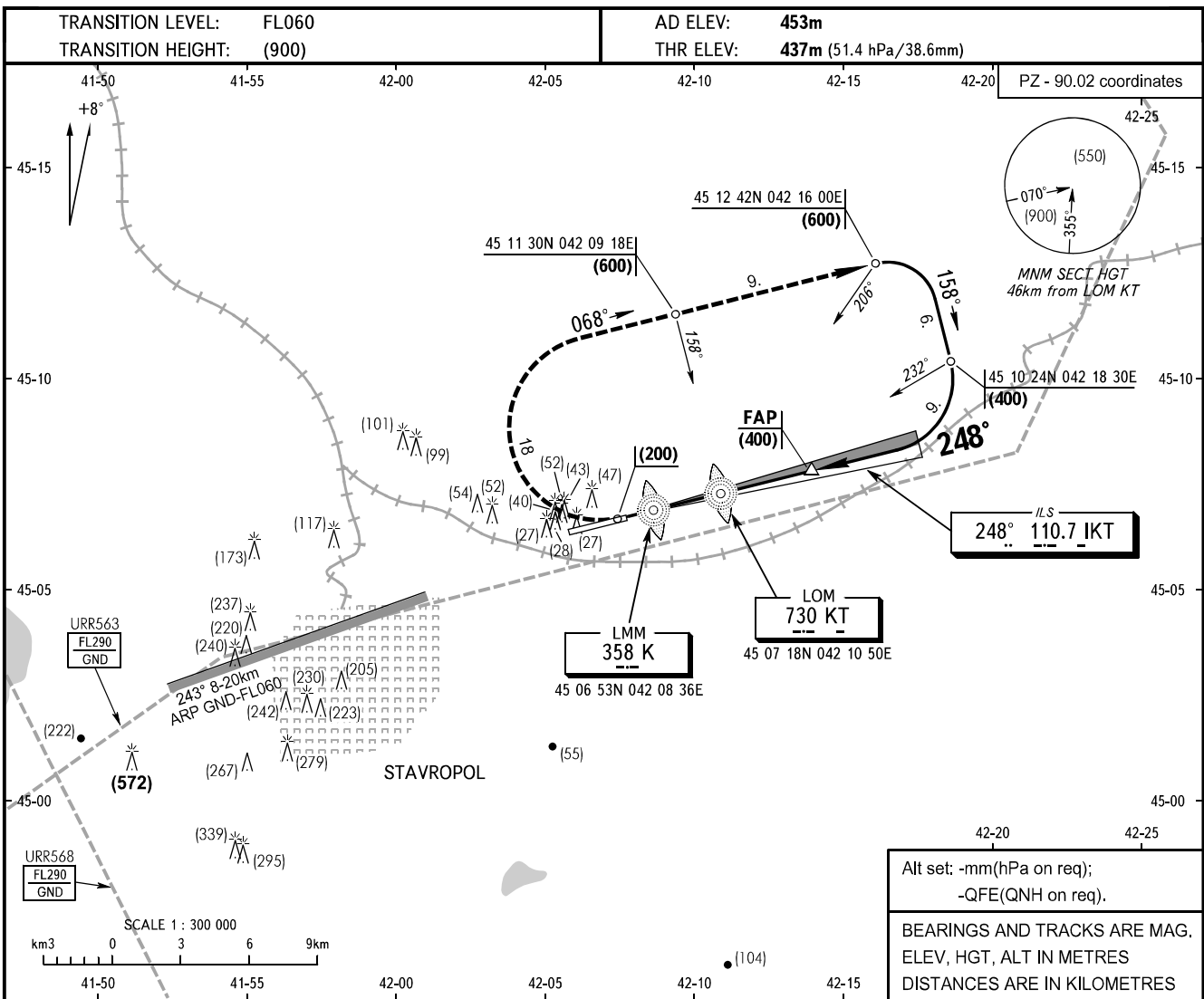


**INSTRUMENT  
APPROACH  
CHART - ICAO**

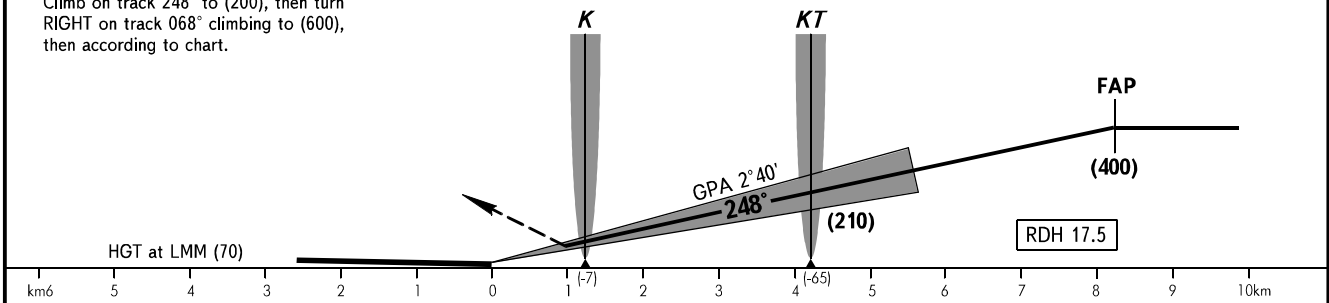
TOWER **120.900**

**STAVROPOL, RUSSIA**  
SHPAKOVSKOYE  
ILS RWY 25



**MISSED APPROACH**

Climb on track 248° to (200), then turn RIGHT on track 068° climbing to (600), then according to chart.



OCA/H		A	B	C	D							
Straight-in Approach	CAT I	480(43)	482(45)	485(48)	488(51)							
GROUND SPEED	km/h	150	180	210	240	270	300	330	360	390	420	450
LOM-THR 4200m	min:sec	1.40	1.24	1.12	1.03	0.56	0.50	0.46	0.42	0.39	0.36	0.34
RATE OF DESCENT	m/s	2.0	2.3	2.7	3.1	3.5	3.9	4.2	4.6	5.0	5.4	5.8

CHANGE: OBST, URR