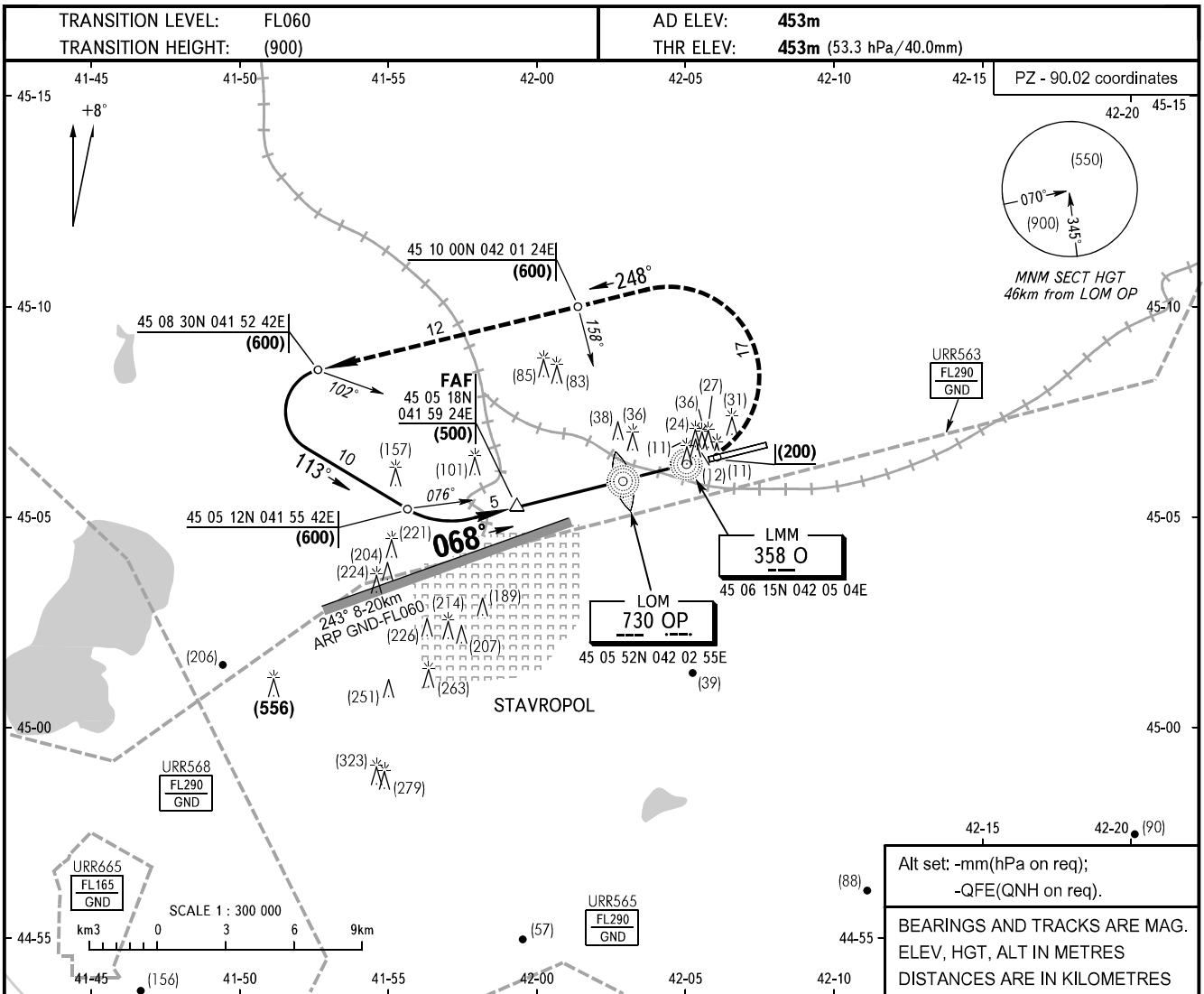


**INSTRUMENT
APPROACH
CHART - ICAO**

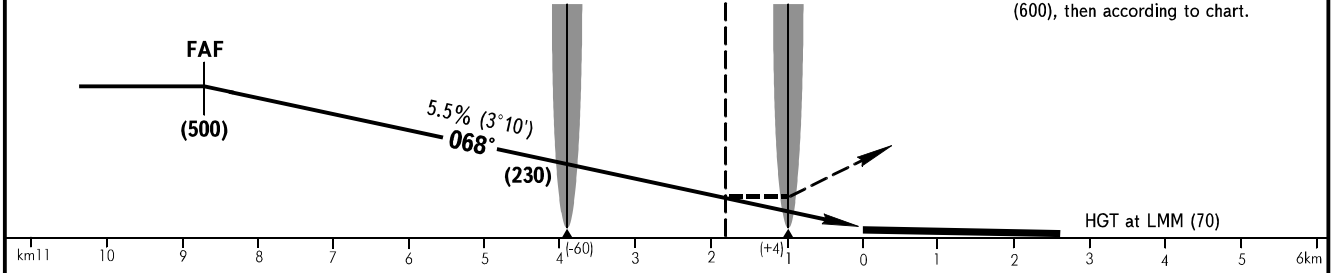
TOWER **120.900**

STAVROPOL, RUSSIA
SHPAKOVSKOYE
2 NDB, NDB RWY 07



2 NDB and NDB approach: FAF by TAR azimuth 247° MAG, DIST 9.7.
(Terminal area surveillance radar 45 06 38N 042 06 32E).
Approach-to-land shall be under control of SRE.

MISSED APPROACH
Climb on track 068° to (200), then turn LEFT on track 248° climbing to (600), then according to chart.



OCA/H		A	B	C	D	
Straight-in Approach	2 NDB	With FAF	563(110)	563(110)	563(110)	563(110)
		WO FAF	827(374)	827(374)	827(374)	827(374)
	NDB (LOM)	With FAF	563(110)	563(110)	563(110)	563(110)
		WO FAF	836(383)	836(383)	836(383)	836(383)

WARNING:
1. Turbulence with downdraughts and wind shear may be expected on final in the vicinity of base turn.
2. Ground proximity warning system may be brought into operation between LOM and LMM due to abrupt change of relief.

GROUND SPEED	km/h	150	180	210	240	270	300	330	360	390	420	450
LOM-THR 3900m	min:sec	1.34	1.18	1.07	0.59	0.52	0.47	0.43	0.39	0.36	0.34	0.31
RATE OF DESCENT	m/s	2.2	2.6	3.1	3.5	4.0	4.4	4.8	5.3	5.7	6.1	6.6

CHANGE: New chart