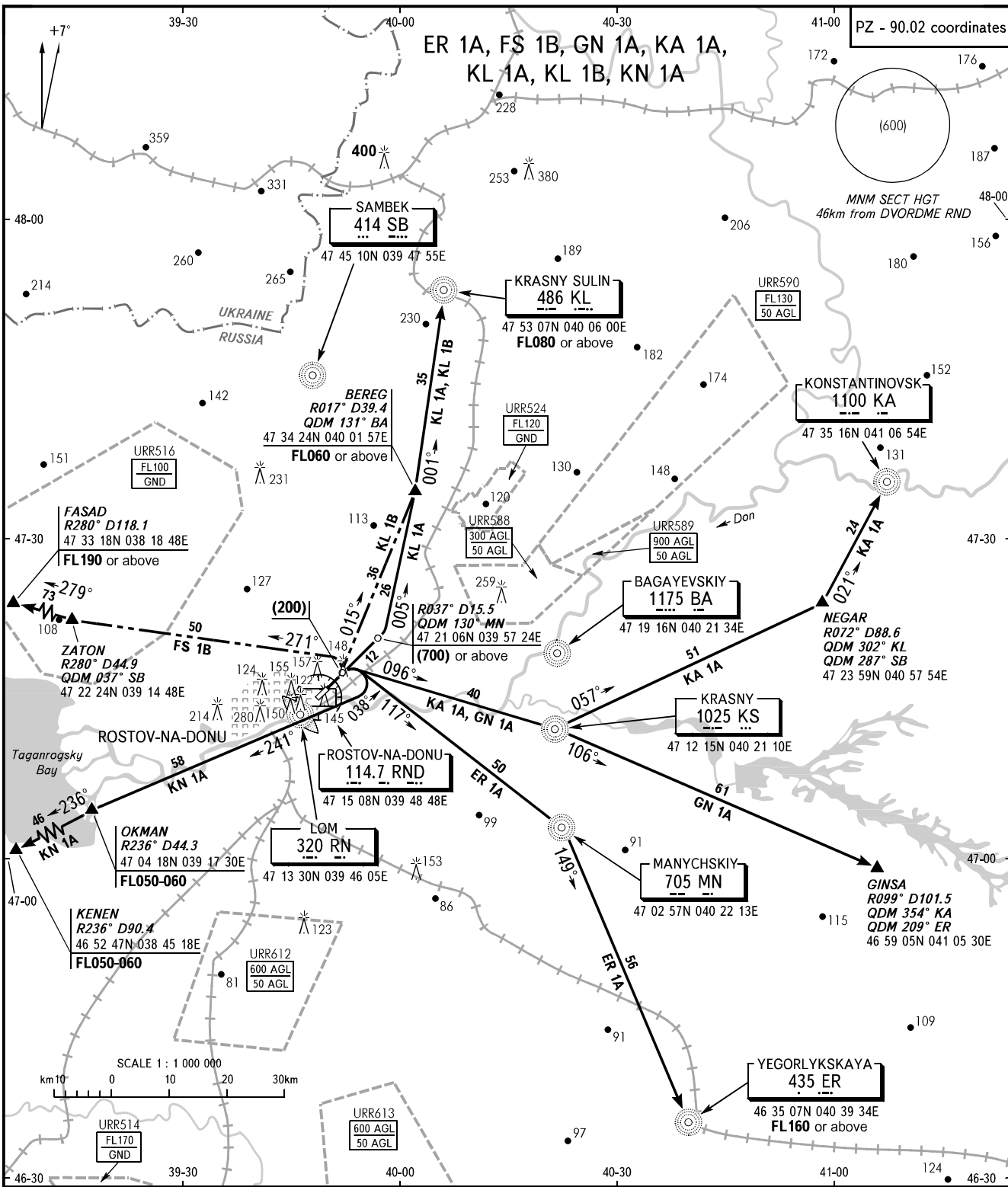


STANDARD DEPARTURE CHART
INSTRUMENT (SID) - ICAO

TRANSITION
HEIGHT : (900)

ROSTOV-NA-DONU, RUSSIA
ROSTOV-NA-DONU
RWY 04



START 119.700
RADAR 121.200
APPROACH 128.200 127.100R

WARNING:
1. Altitudes of crossing the airway entry points are by ATC instructions.
2. After take-off immediately contact Rostov-Radar.

BEARINGS AND TRACKS ARE MAGNETIC
ALTITUDES, HEIGHTS AND ELEVATIONS ARE IN METRES
DISTANCES ARE IN KILOMETRES

CHANGE: New chart