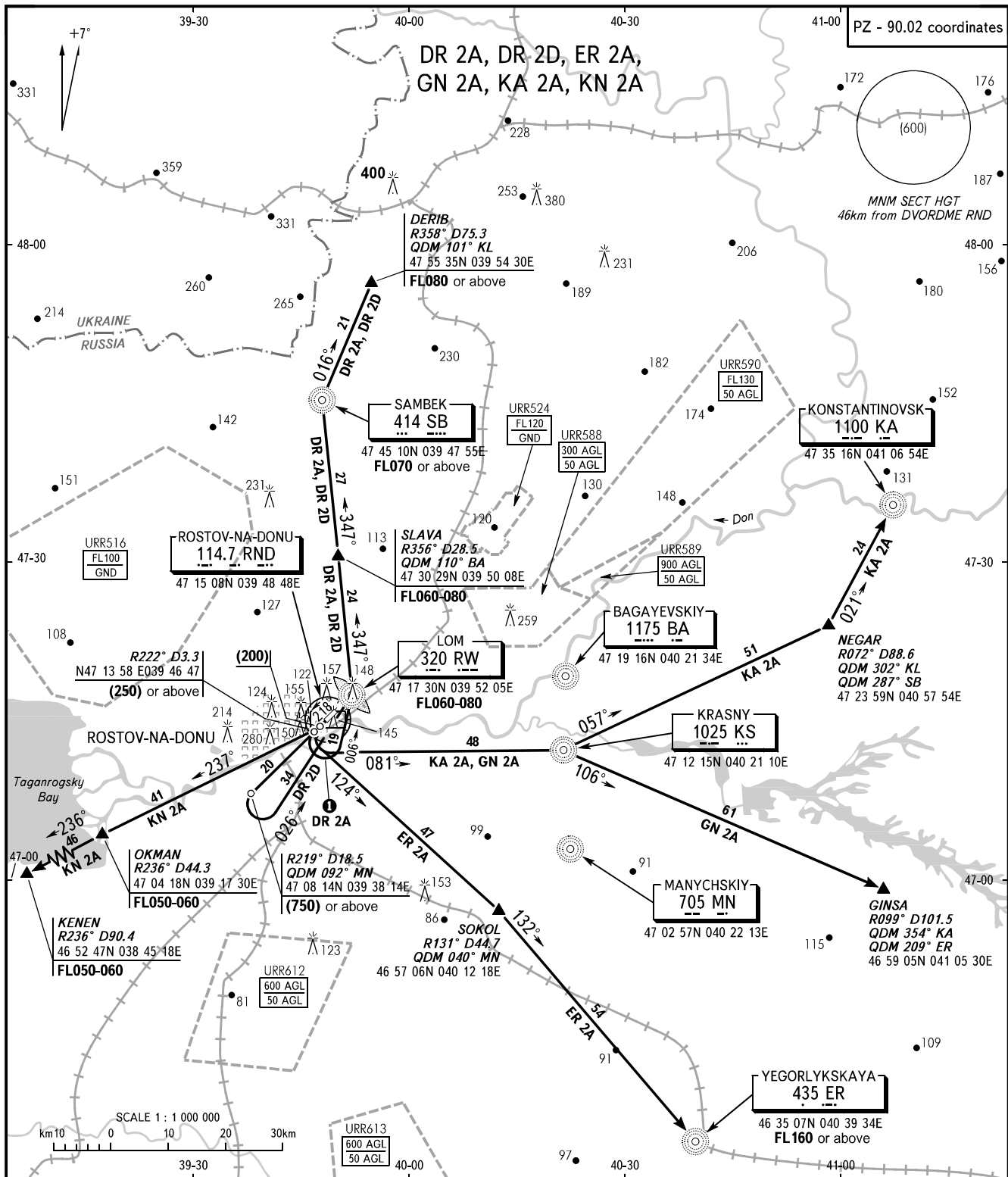


STANDARD DEPARTURE CHART  
INSTRUMENT (SID) - ICAO

TRANSITION  
HEIGHT : (900)

ROSTOV-NA-DONU, RUSSIA  
ROSTOV-NA-DONU  
RWY 22



START 119.700  
RADAR 121.200  
APPROACH 128.200 127.100R

**WARNING:**

- All ACFT shall carry out take-off according to noise abatement procedures as per Aeroplane Flight Manual.
- Altitudes of crossing the airway entry points are by ATC instructions.
- After take-off immediately contact Rostov-Radar.
- If unable to comply with the established climb gradient of DR 2A SID route the crew shall report it to ATS unit before take-off and DR 2D SID route will be assigned.

① Radius 2.7km

Vkm/h	200	250	300	350	400
BANK, DEG	07	11	15	20	25

BEARINGS AND TRACKS ARE MAGNETIC  
ALTITUDES, HEIGHTS AND ELEVATIONS ARE IN METRES  
DISTANCES ARE IN KILOMETRES