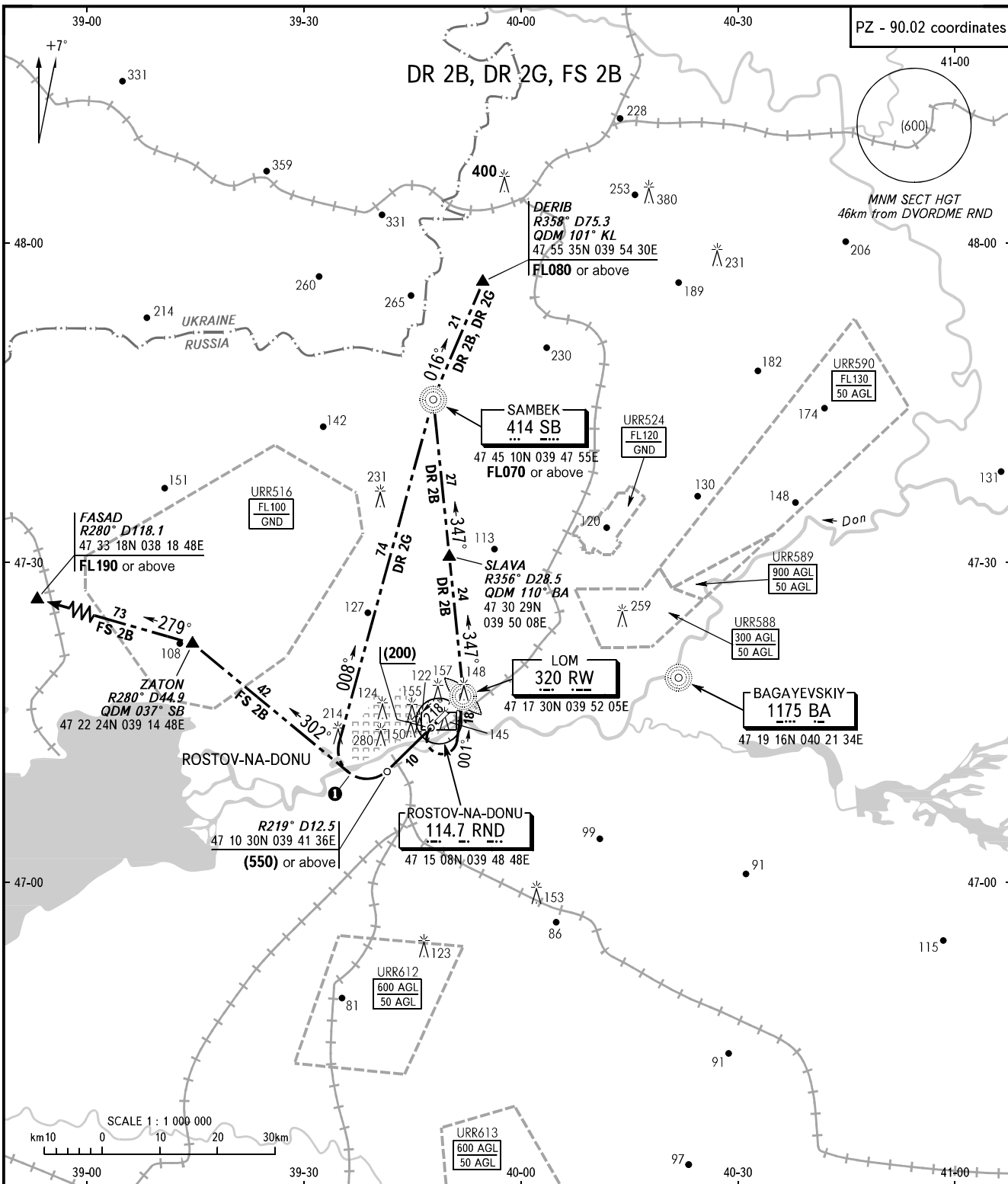


STANDARD DEPARTURE CHART
INSTRUMENT (SID) - ICAO

TRANSITION
HEIGHT : (900)

ROSTOV-NA-DONU, RUSSIA
ROSTOV-NA-DONU
RWY 22



START 119.700
RADAR 121.200
APPROACH 128.200 127.100R

- WARNING:**
- All ACFT shall carry out take-off according to noise abatement procedures as per Aeroplane Flight Manual.
 - Altitudes of crossing the airway entry points are by ATC instructions.
 - After take-off immediately contact Rostov-Radar.

① Radius 4.9km

Vkm/h	250	300	350	400	450
BANK, DEG	06	08	11	14	18

BEARINGS AND TRACKS ARE MAGNETIC
ALTITUDES, HEIGHTS AND ELEVATIONS ARE IN METRES
DISTANCES ARE IN KILOMETRES