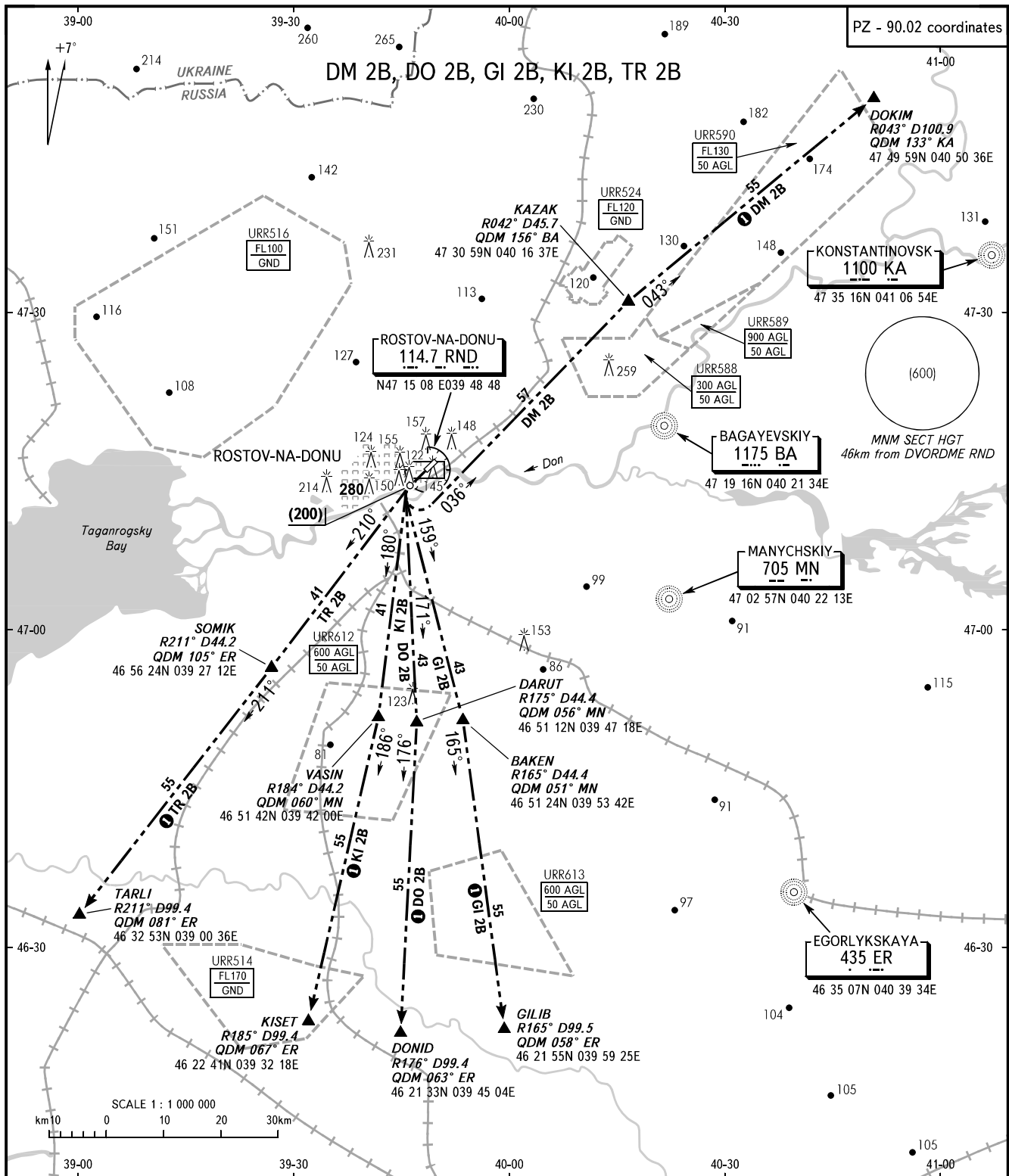


STANDARD DEPARTURE CHART
INSTRUMENT (SID) - ICAO

TRANSITION
HEIGHT : (900)

ROSTOV-NA-DONU, RUSSIA
ROSTOV-NA-DONU
RWY 22



START 119.700
RADAR 121.200
APPROACH 128.200

① Only for Russian users of airspace.

WARNING:

1. All ACFT shall carry out take-off according to noise abatement procedures as per Aeroplane Flight Manual.
2. FL for passing the entry points on ATS routes shall be assigned by ATC.
3. After take-off immediately contact Rostov-Radar.

BEARINGS AND TRACKS ARE MAGNETIC
ALTITUDES, HEIGHTS AND ELEVATIONS ARE IN METRES
DISTANCES ARE IN KILOMETRES