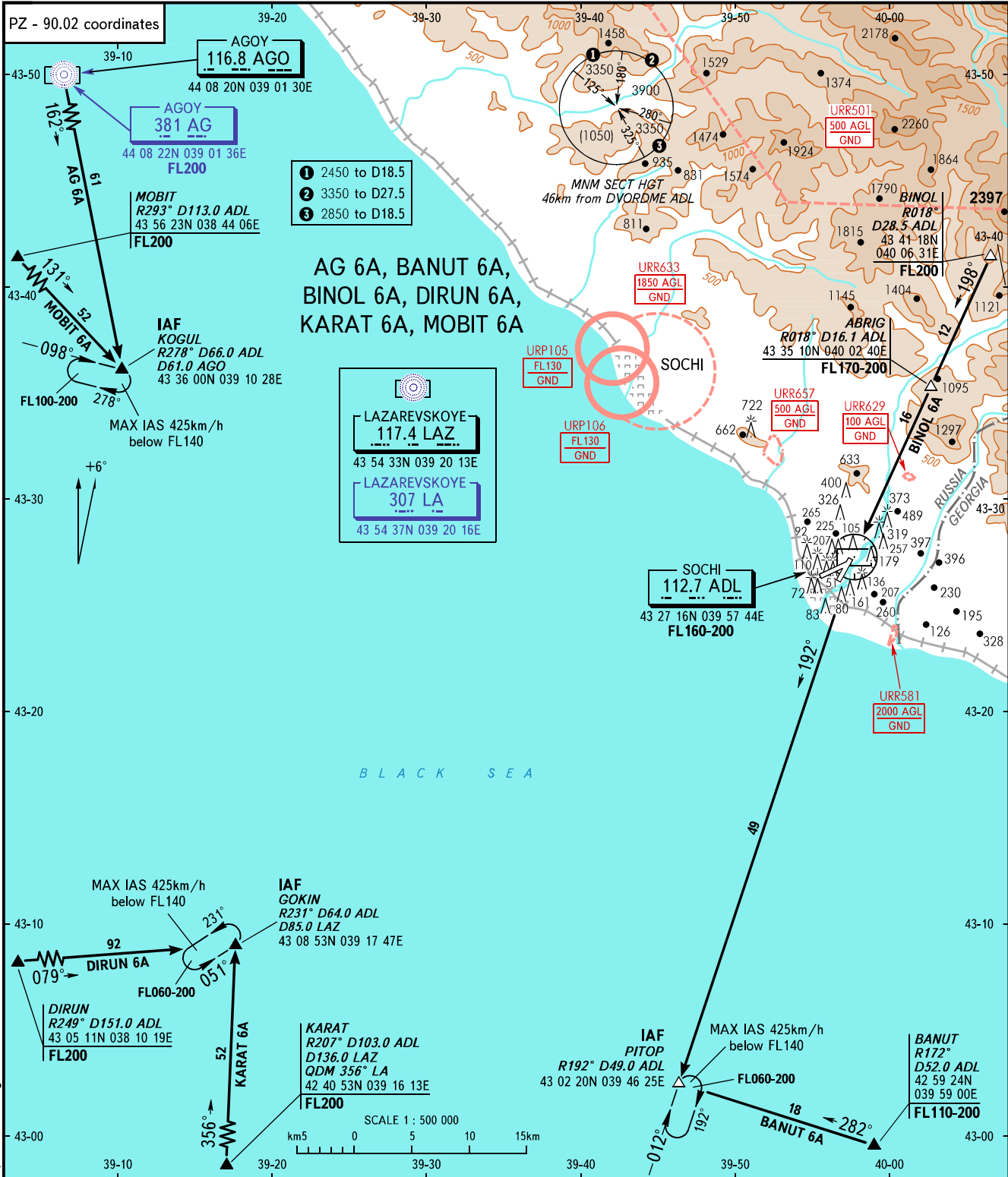


STANDARD ARRIVAL CHART  
INSTRUMENT (STAR) - ICAO

TRANSITION  
LEVEL : **FL050**

SOCHI, RUSSIA  
SOCHI  
RWY 02



APPROACH **118.300**  
RADAR **119.700**  
TOWER **124.600**

BEARINGS AND TRACKS ARE MAGNETIC  
ALTITUDES, HEIGHTS AND ELEVATIONS ARE IN METRES  
DISTANCES ARE IN KILOMETRES

CHANGE: COM, LTD BRG withdrawn, STAR designators