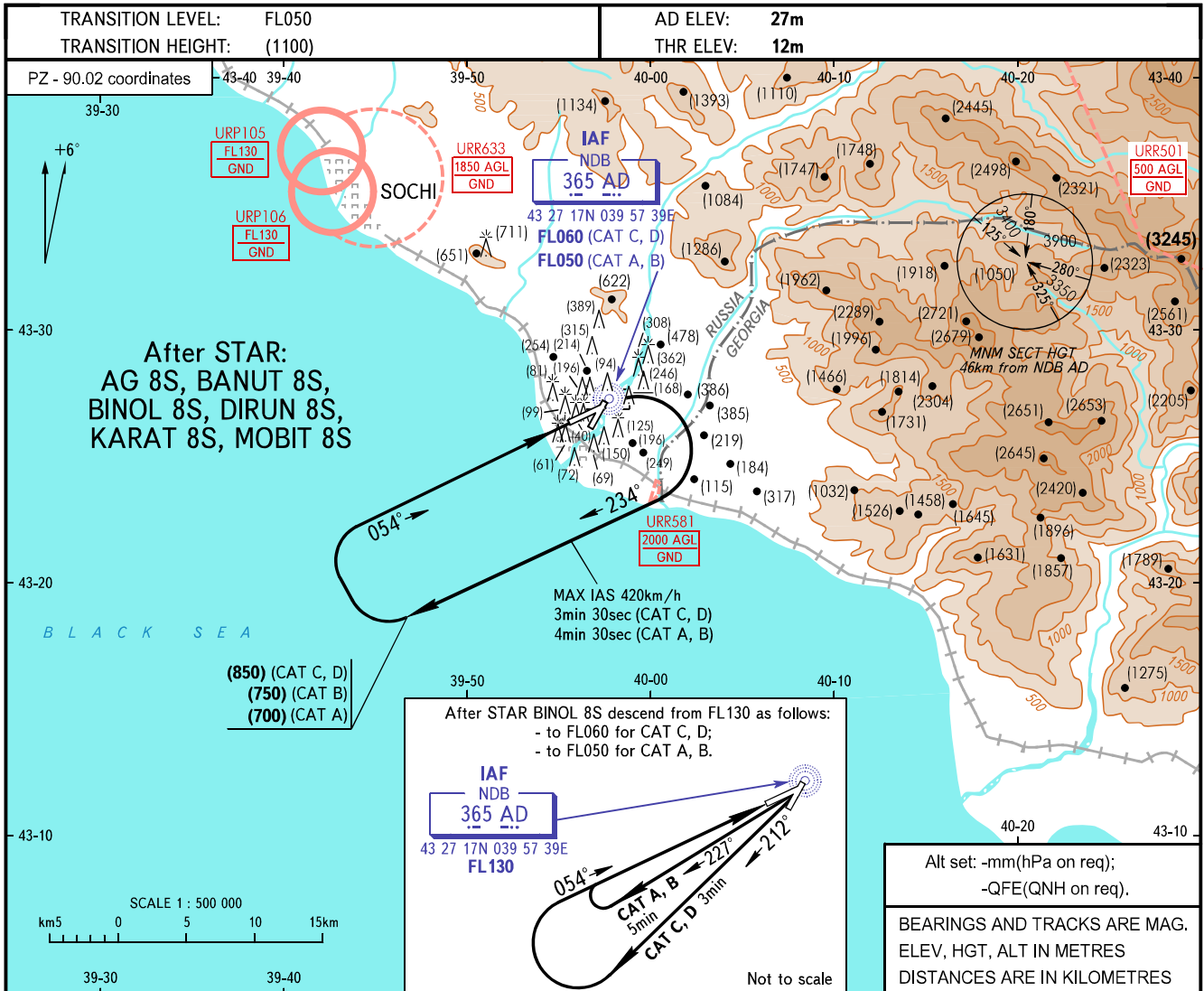


**INSTRUMENT
APPROACH
CHART - ICAO**

**SOCHI, RUSSIA
SOCHI
NDB RWY 06**

APPROACH	118.300
RADAR	119.700
TOWER	121.200

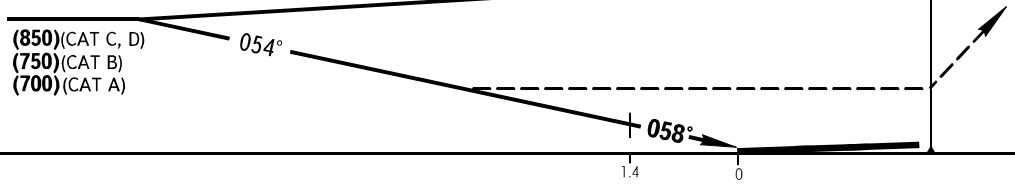


MISSED APPROACH

At MAPt turn RIGHT onto track 234° climbing to:

- (850) (CAT C, D);
- (750) (CAT B);
- (700) (CAT A).

After termination of flight time on track 234° turn RIGHT on final on track 054° or as instructed by a controller.



Alt set: -mm(hPa on req);
-QFE(QNH on req).
BEARINGS AND TRACKS ARE MAG.
ELEV, HGT, ALT IN METRES
DISTANCES ARE IN KILOMETRES

**IAF
FL060 (CAT C, D)
FL050 (CAT A, B)
MAPt
AD**

OCA/H		A	B	C	D
Straight-in	NDB	362(350)	387(375)	492(480)	497(485)
	Approach				

WARNING:
1. Heavy turbulence with down-draughts is expected on final.
2. Strengthened part of CWY at RWY 06 THR is 75m.
3. Final approach track intercepts the extended RCL at 1400m from RWY 06 THR, the angle of interception is 4°.

CHANGE: New chart