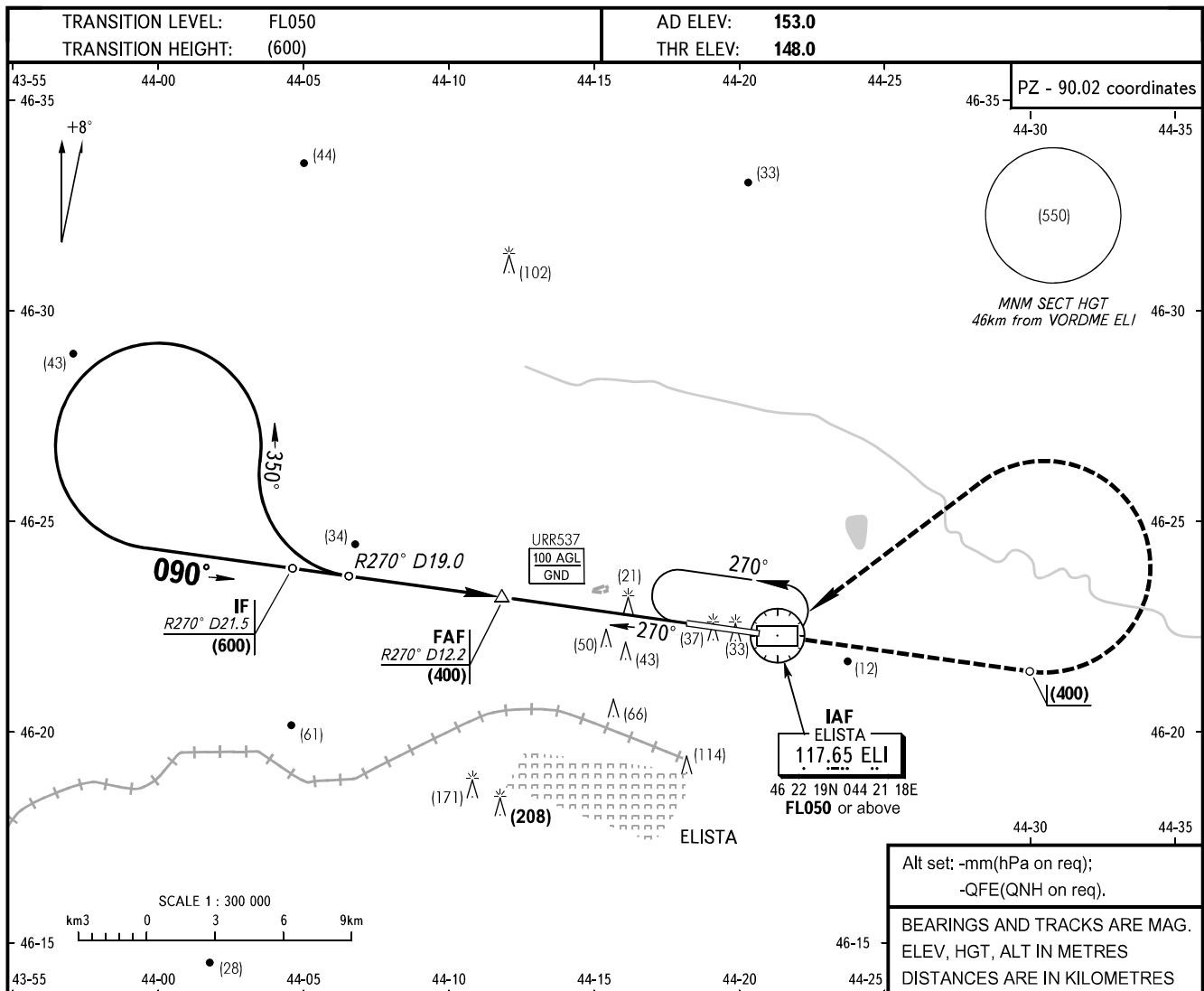


INSTRUMENT  
APPROACH  
CHART - ICAO

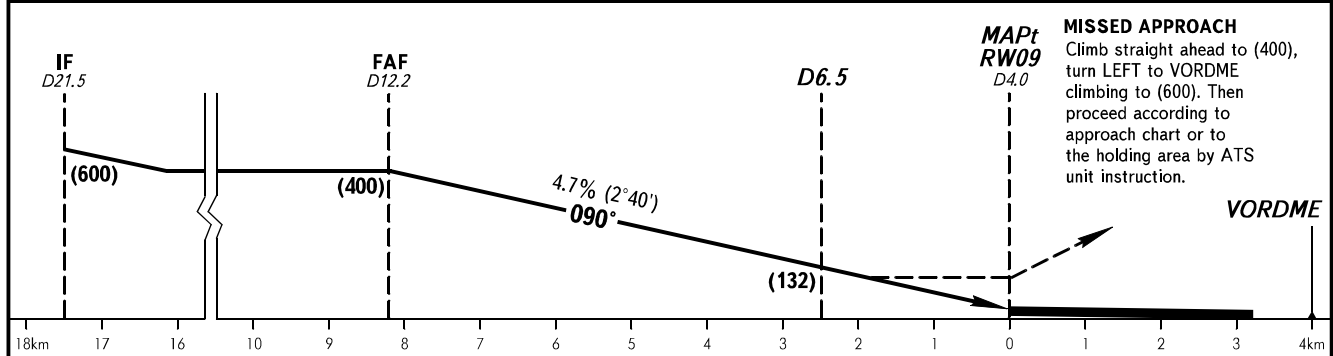
ELISTA, RUSSIA  
ELISTA  
VORDME RWY 09

TOWER	124.200
-------	---------



Alt set: -mm(hPa on req);  
-QFE(QNH on req).

BEARINGS AND TRACKS ARE MAG.  
ELEV, HGT, ALT IN METRES  
DISTANCES ARE IN KILOMETRES



**MISSED APPROACH**  
Climb straight ahead to (400),  
turn LEFT to VORDME  
climbing to (600). Then  
proceed according to  
approach chart or to  
the holding area by ATS  
unit instruction.

OCA/H		A	B	C	D								
Straight-in	<b>VORDME</b>	261(112)	261(112)	261(112)	261(112)								
	Approach												
GROUND SPEED		km/h	150	180	210	240	270	300	330	360	390	420	450
RATE OF DESCENT		m/s	1.9	2.3	2.7	3.1	3.5	3.9	4.3	4.7	5.0	5.4	5.8