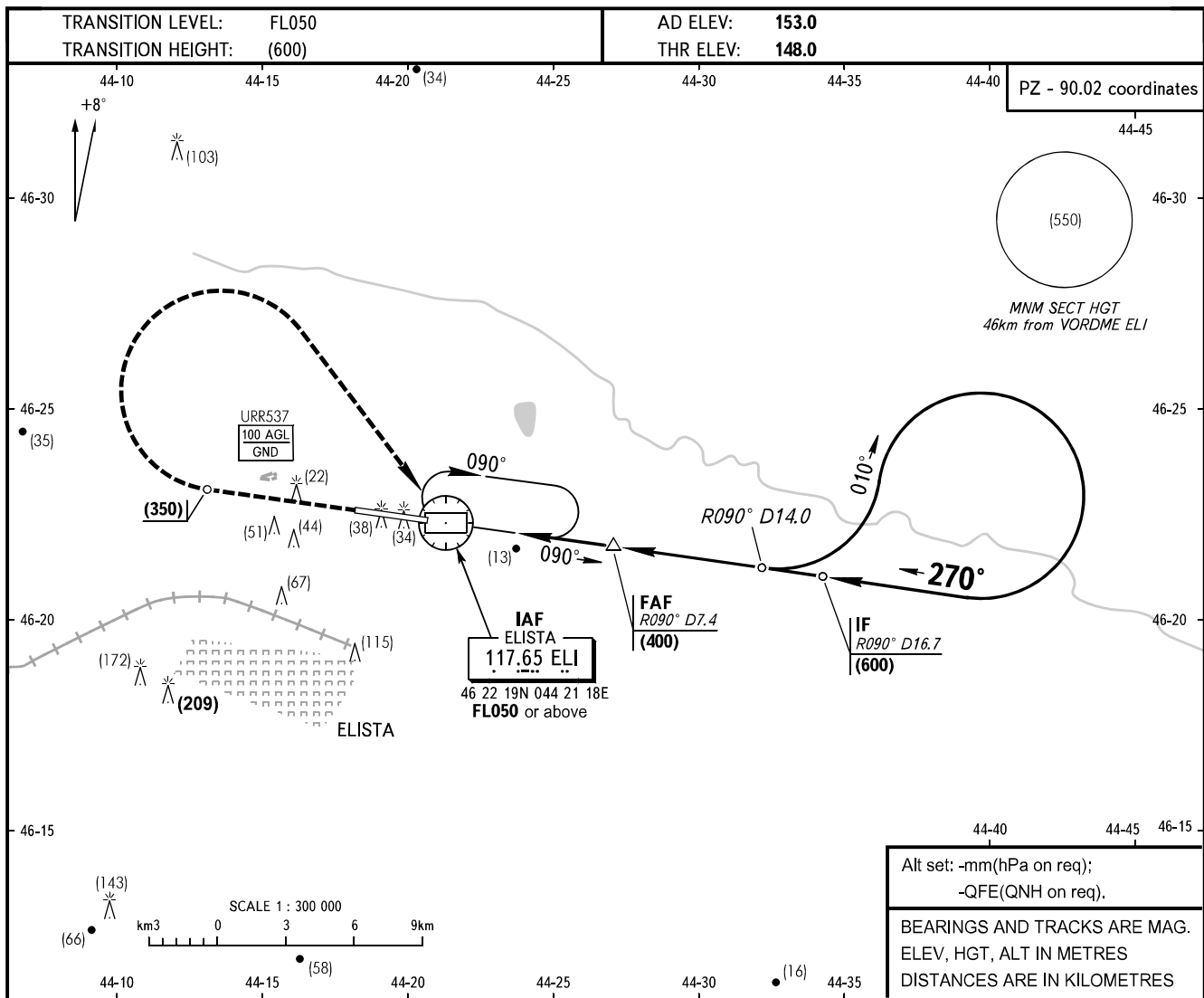


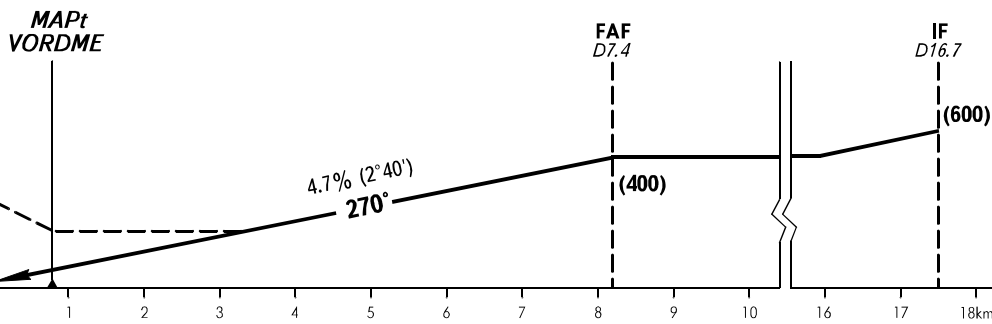
**INSTRUMENT
APPROACH
CHART - ICAO**

TOWER	124.200
-------	---------

ELISTA, RUSSIA
ELISTA
VORDME RWY 27



MISSED APPROACH
Climb straight ahead to (350), turn RIGHT to VORDME climbing to (600). Then proceed according to approach chart or to the holding area by ATS unit instruction.



OCA/H		A	B	C	D								
Straight-in	VORDME	256(108)	256(108)	256(108)	256(108)								
	Approach												
		km/h	150	180	210	240	270	300	330	360	390	420	450
		m/s	1.9	2.3	2.7	3.1	3.5	3.9	4.3	4.7	5.0	5.4	5.8