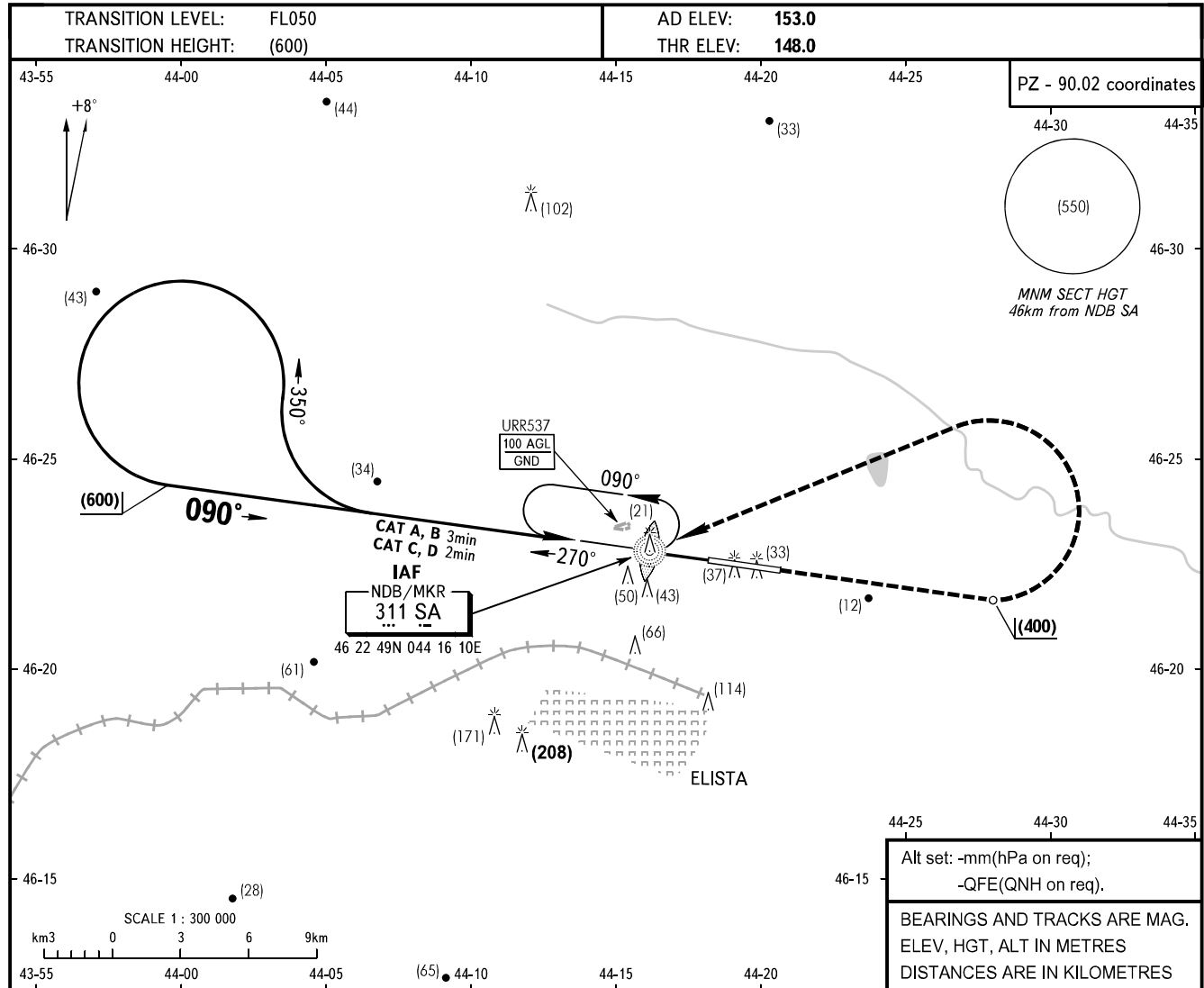


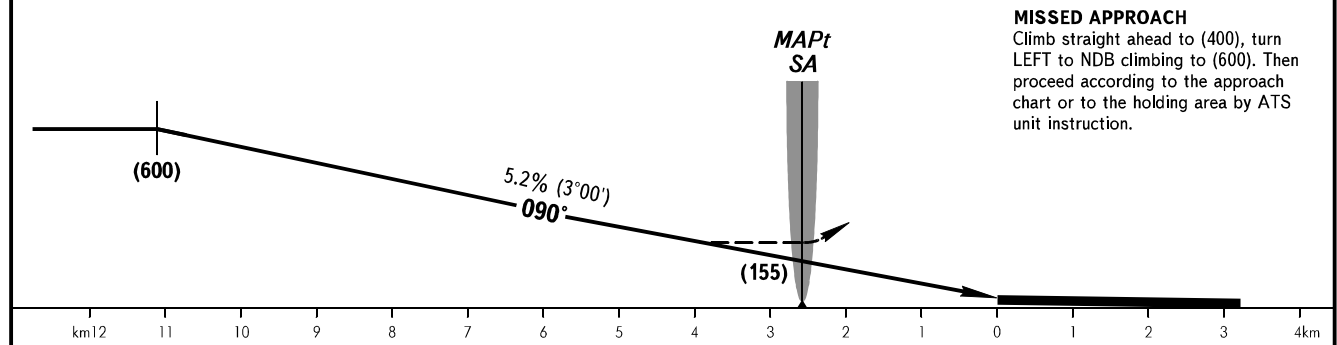
**INSTRUMENT  
APPROACH  
CHART - ICAO**

TOWER **124.200**

**ELISTA, RUSSIA**  
ELISTA  
NDB/MKR RWY 09



Alt set: -mm(hPa on req);  
-QFE(QNH on req).  
BEARINGS AND TRACKS ARE MAG.  
ELEV, HGT, ALT IN METRES  
DISTANCES ARE IN KILOMETRES



**MISSED APPROACH**  
Climb straight ahead to (400), turn LEFT to NDB climbing to (600). Then proceed according to the approach chart or to the holding area by ATS unit instruction.

OCA/H		A	B	C	D										
Straight-in	NDB/MKR	358(210)	358(210)	358(210)	358(210)										
	Approach														
GROUND SPEED		km/h	150	180	210	240	270	300	330	360	390	420	450		
RATE OF DESCENT		m/s	2.2	2.6	3.0	3.5	3.9	4.3	4.8	5.2	5.6	6.1	6.5		

CHANGE: New chart