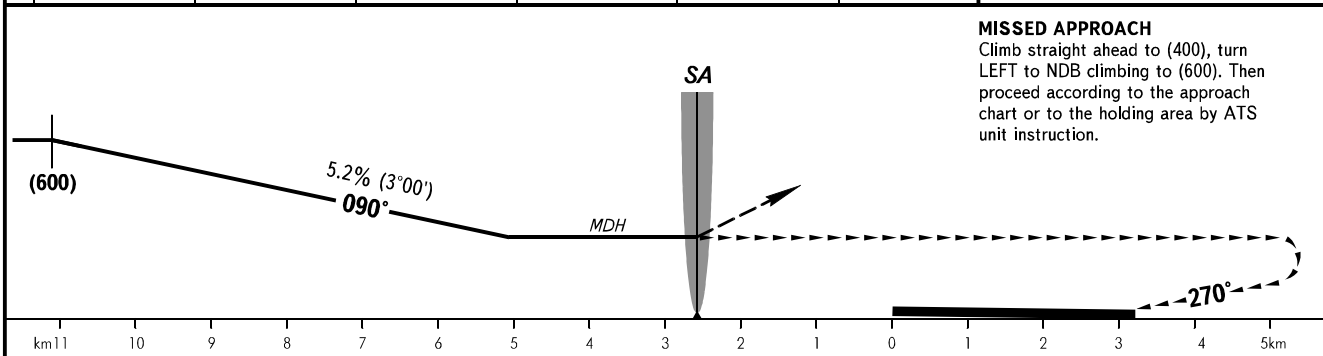
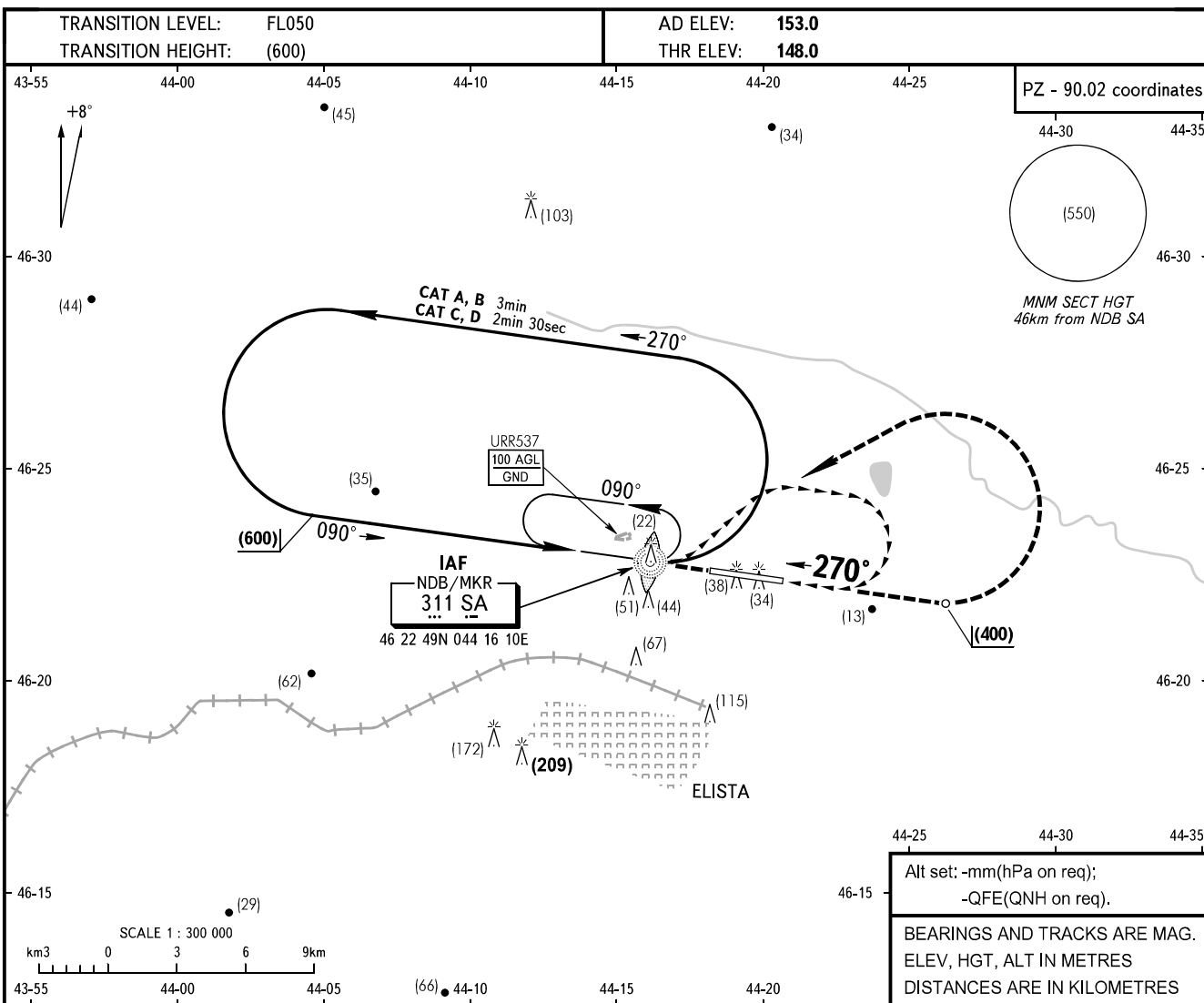


VISUAL
APPROACH
CHART - ICAO

TOWER 124.200

ELISTA, RUSSIA
ELISTA
CIRCLING RWY 27



OCA/H		A	B	C	D	D-widebody		WARNING Visual manoeuvring shall be carried out to the north of the aerodrome only.					
Visual Manoeuvring (Circling) Area	RWY 27	358(210)	358(210)	382(235)	382(235)	506(359)							
ACFT CAT		A		B		C		D		D-widebody			
MET conditions	MDH, m	210		210		300		300		360			
	Cloud base, m	260		260		400		400		460			
	Visibility, m	3000		3000		5000		5000		5000			
GROUND SPEED		km/h	150	180	210	240	270	300	330	360	390	420	450
RATE OF DESCENT		m/s	2.2	2.6	3.0	3.5	3.9	4.3	4.8	5.2	5.6	6.1	6.5

CHANGE: New chart