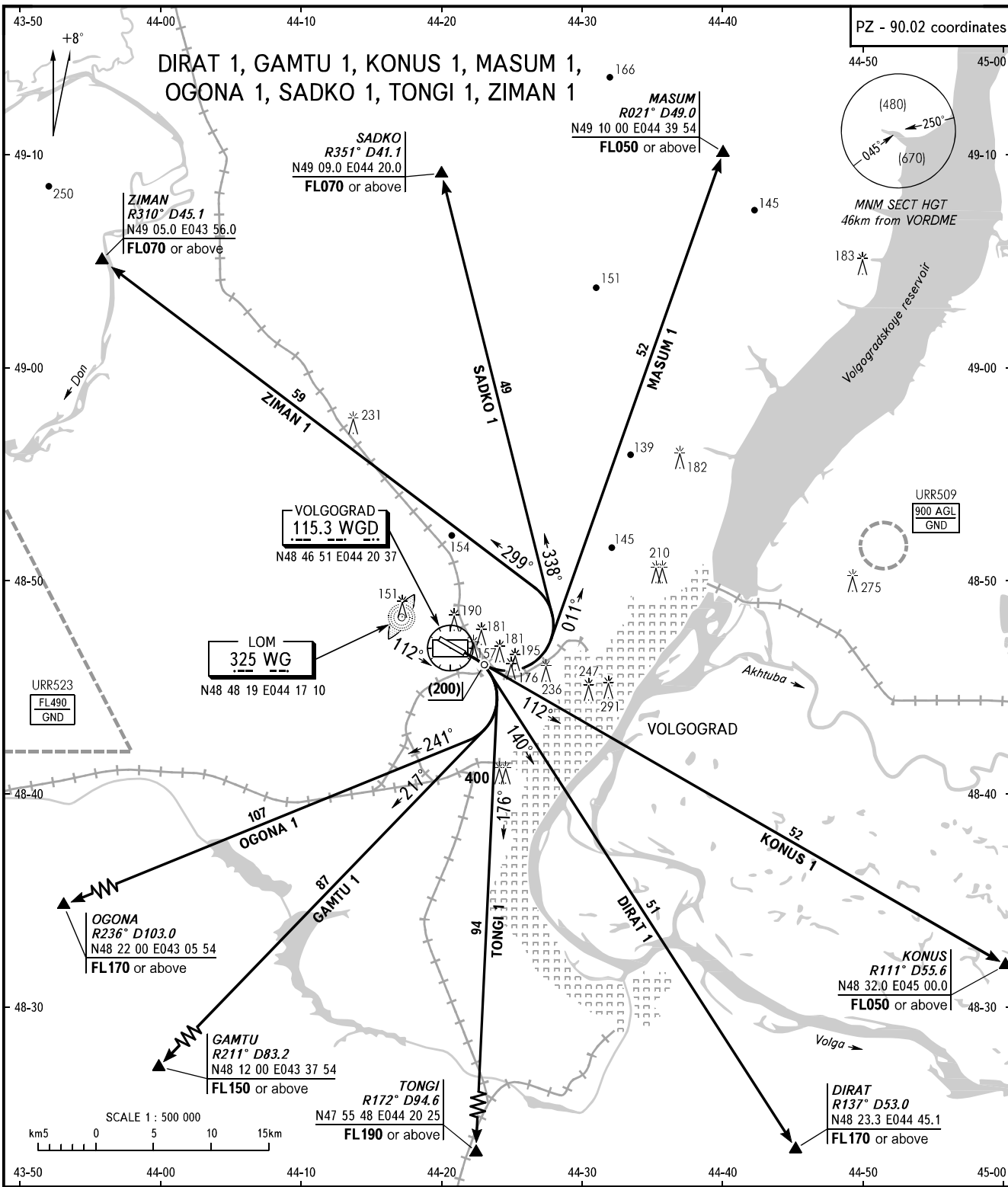


STANDARD DEPARTURE CHART
INSTRUMENT (SID) - ICAO

TRANSITION
HEIGHT : (700)

VOLGOGRAD, RUSSIA
GUMRAK
RWY 11



START	128.0
KRUG	122.0
APPROACH	125.3
ROSTOV CONTROL Sector 11	118.7
ROSTOV CONTROL Sector 12	134.6

WARNING
Take-off shall be carried out using noise abatement procedure for the area according to Aeroplane Flight Manual.

BEARINGS AND TRACKS ARE MAGNETIC
ALTITUDES, HEIGHTS AND ELEVATIONS ARE IN METRES
DISTANCES ARE IN KILOMETRES

CHANGE: New chart