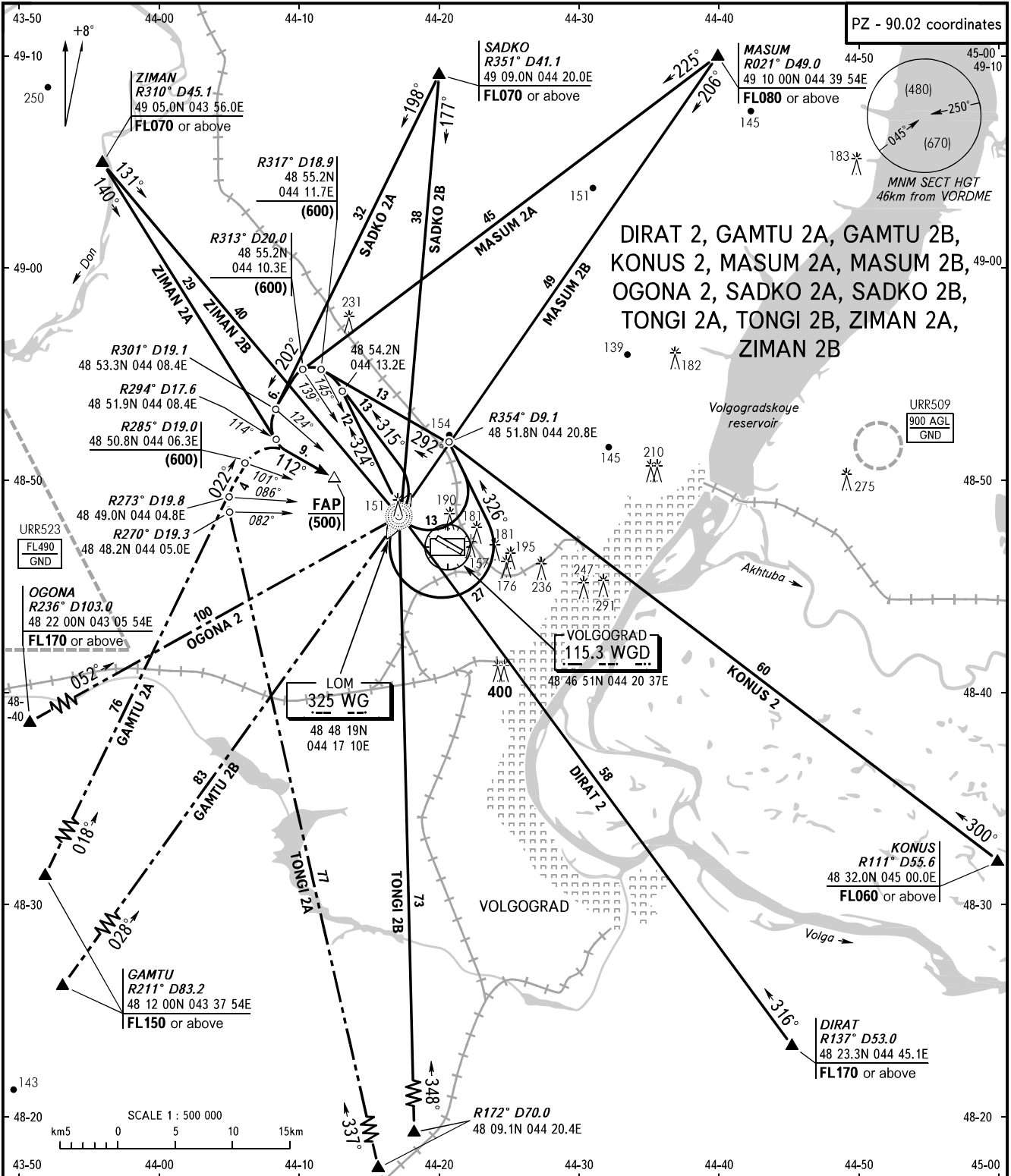


STANDARD ARRIVAL CHART
INSTRUMENT (STAR) - ICAO

TRANSITION
LEVEL: **1**

VOLGOGRAD, RUSSIA
GUMRAK
RWY 11



APPROACH 125.3
KRUG 122.0
TOWER 128.0

WARNING:

- When continuous radar control is not provided ACFT shall cross LOM by the ATS unit instruction for further descent and approach.
- During straight-in approach ACFT shall reach the transition level not nearer than 30km from RWY THR.

1 TRANSITION LEVEL:

- FL040 when atmospheric pressure is 747mm mercury column or above;
- FL050 when atmospheric pressure is 747-720mm mercury column;
- FL060 when atmospheric pressure is 720mm mercury column or less.

BEARINGS AND TRACKS ARE MAGNETIC
ALTITUDES, HEIGHTS AND ELEVATIONS ARE IN METRES
DISTANCES ARE IN KILOMETRES

CHANGE: DIST R273°, R317°