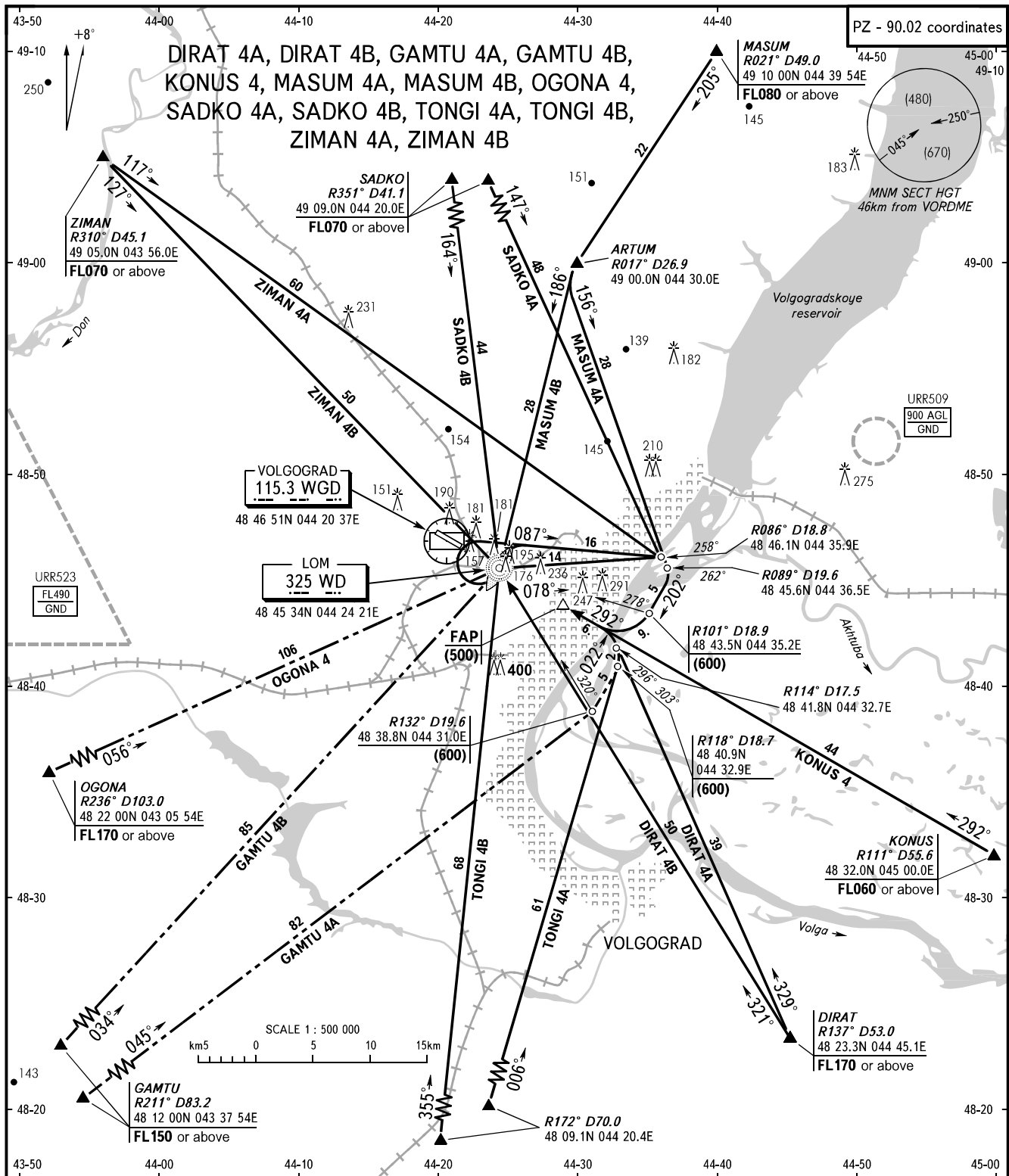


STANDARD ARRIVAL CHART  
INSTRUMENT (STAR) - ICAO

TRANSITION  
LEVEL: **1**



APPROACH	125.3
KRUG	122.0
TOWER	128.0

**WARNING:**

- When continuous radar control is not provided ACFT shall cross LOM by the ATS unit instruction for further descent and approach.
- During straight-in approach ACFT shall reach the transition level not nearer than 30km from the RWY THR.

**TRANSITION LEVEL:**

- FL040 when atmospheric pressure is 747mm mercury column or above;
- FL050 when atmospheric pressure is 747-720mm mercury column;
- FL060 when atmospheric pressure is 720mm mercury column or less.

BEARINGS AND TRACKS ARE MAGNETIC  
ALTITUDES, HEIGHTS AND ELEVATIONS ARE IN METRES  
DISTANCES ARE IN KILOMETRES