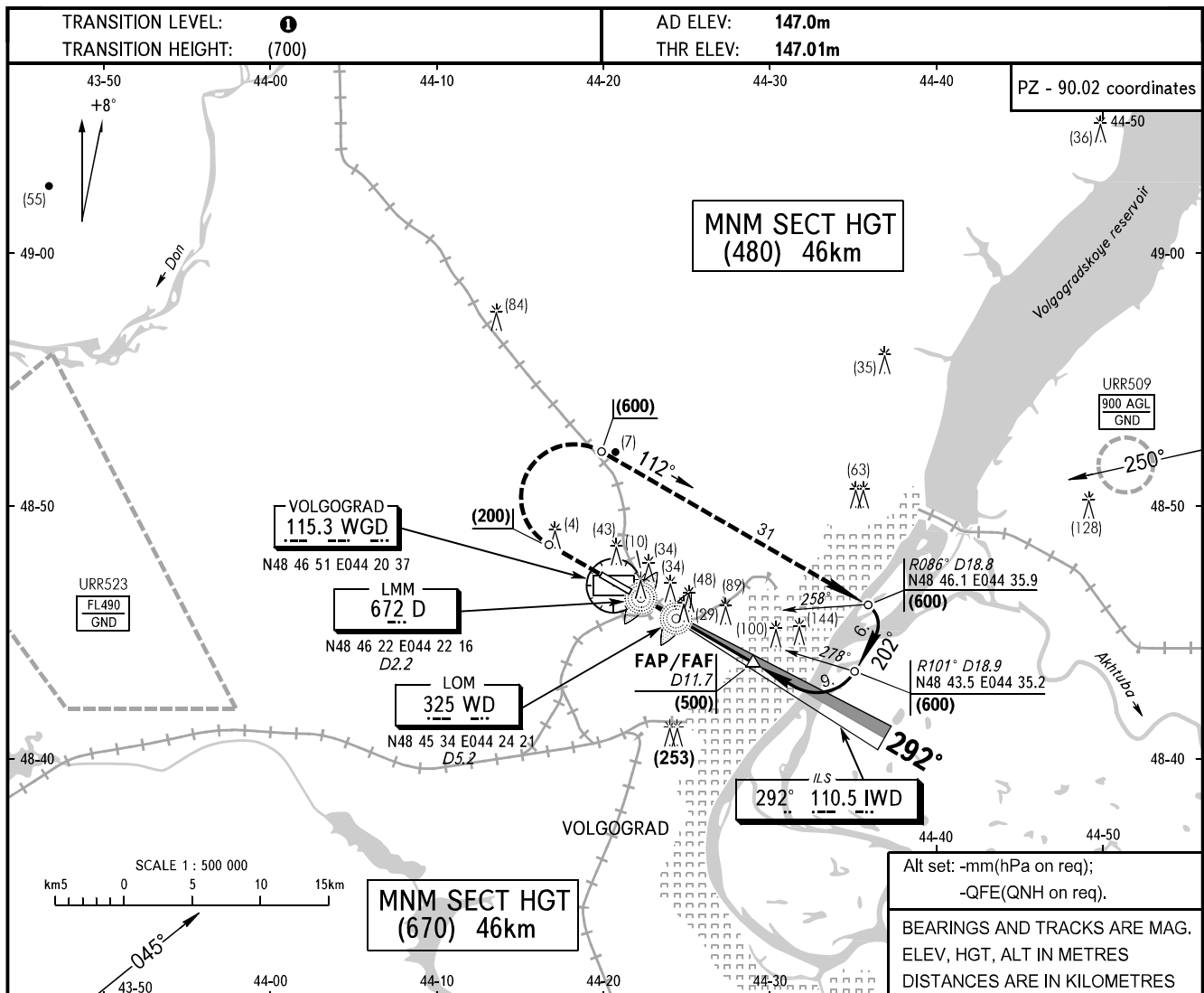


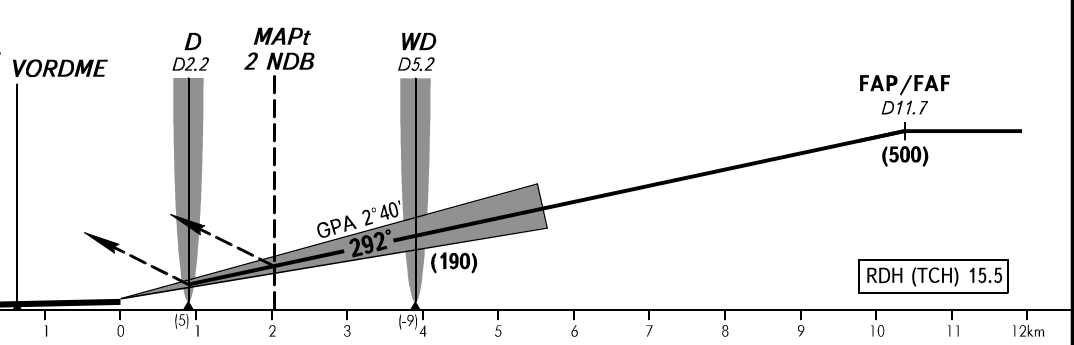
**INSTRUMENT
APPROACH
CHART - ICAO**

| | |
|------------|-------|
| KRUG TOWER | 122.0 |
| TOWER | 128.0 |

VOLGOGRAD, RUSSIA
GUMRAK
ILS, 2 NDB RWY 29



MISSED APPROACH
Climb on track 292° to (200), then turn RIGHT on track 112° climbing to (600), then according to chart.



| OCA/H | | A | B | C | D | | | | | | | | |
|-----------------------------|--------------|----------|----------|----------|----------|------|------|------|------|------|------|------|------|
| Straight-in | ILS | 189(42) | 191(44) | 194(47) | 197(50) | | | | | | | | |
| | 2 NDB | 252(105) | 252(105) | 252(105) | 252(105) | | | | | | | | |
| Approach | | | | | | | | | | | | | |
| GROUND SPEED | | km/h | 150 | 180 | 210 | 240 | 270 | 300 | 330 | 360 | 390 | 420 | 450 |
| LOM-THR 3860m | | min:s | 1.33 | 1.17 | 1.06 | 0.58 | 0.50 | 0.46 | 0.42 | 0.39 | 0.36 | 0.33 | 0.31 |
| RATE OF DESCENT (Grad 4.7%) | | m/s | 1.88 | 2.4 | 2.7 | 3.1 | 3.5 | 3.9 | 4.2 | 4.6 | 5.0 | 5.4 | 5.8 |

① TRANSITION LEVEL:

- FL040 when atmospheric pressure is 747mm mercury column or above;
- FL050 when atmospheric pressure is 747-720mm mercury column;
- FL060 when atmospheric pressure is 720mm mercury column or less.