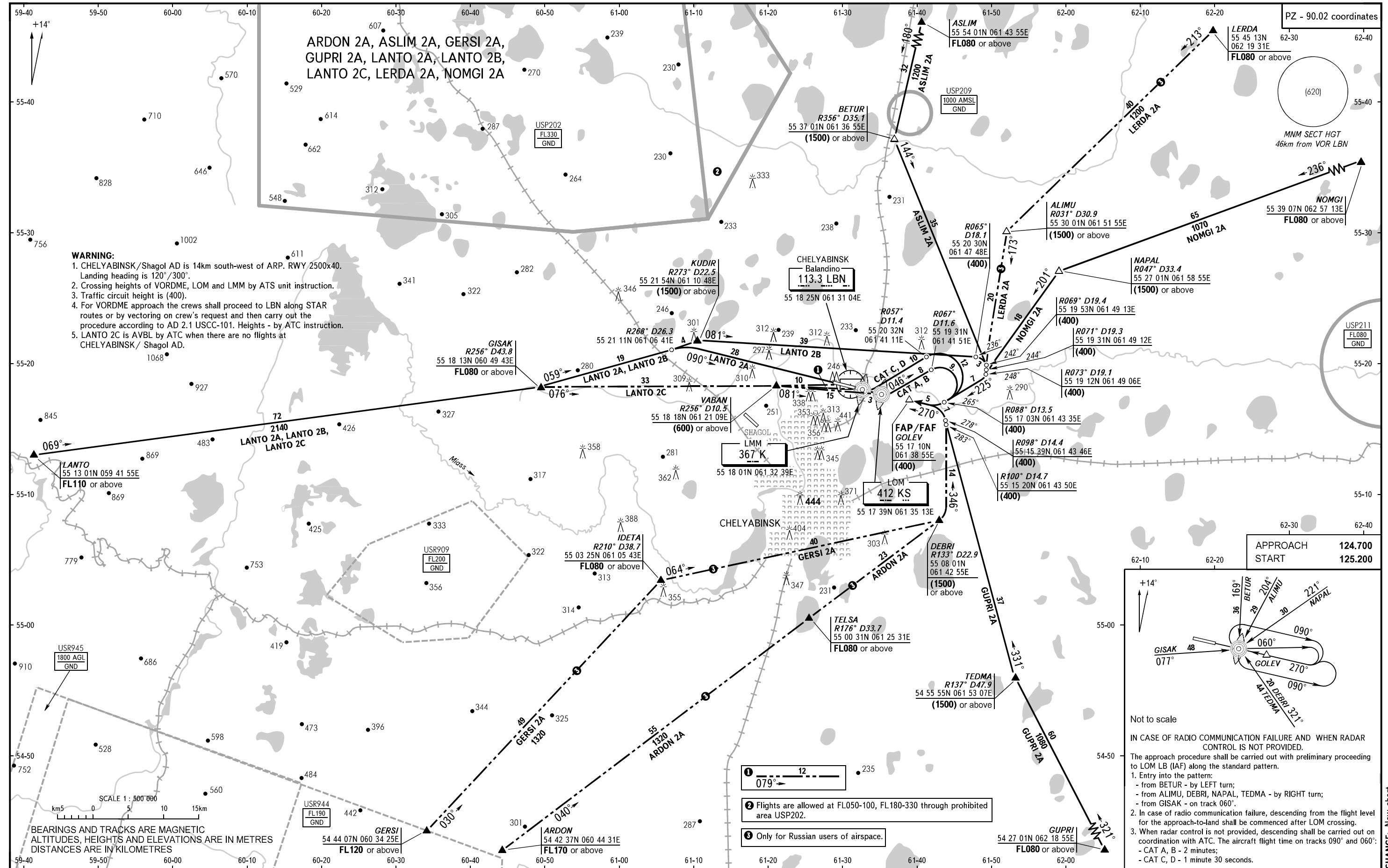


STANDARD ARRIVAL CHART  
INSTRUMENT (STAR) - ICAO

CHELYABINSK, ROSSIA  
BALANDINO  
RWY 27

TRANSITION  
LEVEL: FL080

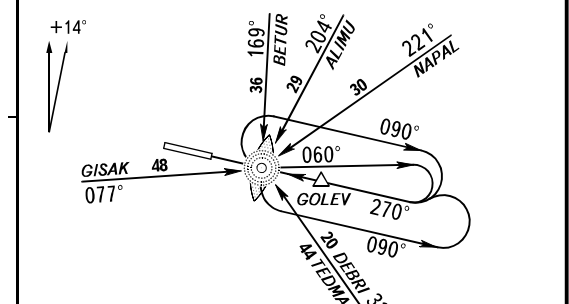
PZ - 90.02 coordinates



**WARNING:**

1. CHELYABINSK/Shagol AD is 14km south-west of ARP. RWY 2500x40. Landing heading is 120°/300°.
2. Crossing heights of VORDME, LOM and LMM by ATS unit instruction.
3. Traffic circuit height is (400).
4. For VORDME approach the crews shall proceed to LBN along STAR routes or by vectoring on crew's request and then carry out the procedure according to AD 2.1 USCC-101. Heights - by ATC instruction.
5. LANTO 2C is AVBL by ATC when there are no flights at CHELYABINSK/Shagol AD.

APPROACH	124.700
START	125.200



Not to scale

IN CASE OF RADIO COMMUNICATION FAILURE AND WHEN RADAR CONTROL IS NOT PROVIDED.

The approach procedure shall be carried out with preliminary proceeding to LOM LB (IAF) along the standard pattern.

1. Entry into the pattern:
  - from BETUR - by LEFT turn;
  - from ALIMU, DEBRI, NAPAL, TEDMA - by RIGHT turn;
  - from GISAQ - on track 060°.
2. In case of radio communication failure, descending from the flight level for the approach-to-land shall be commenced after LOM crossing.
3. When radar control is not provided, descending shall be carried out on coordination with ATC. The aircraft flight time on tracks 090° and 060°:
  - CAT A, B - 2 minutes;
  - CAT C, D - 1 minute 30 seconds.

- ① 079°
- ② Flights are allowed at FL050-100, FL180-330 through prohibited area USP202.
- ③ Only for Russian users of airspace.