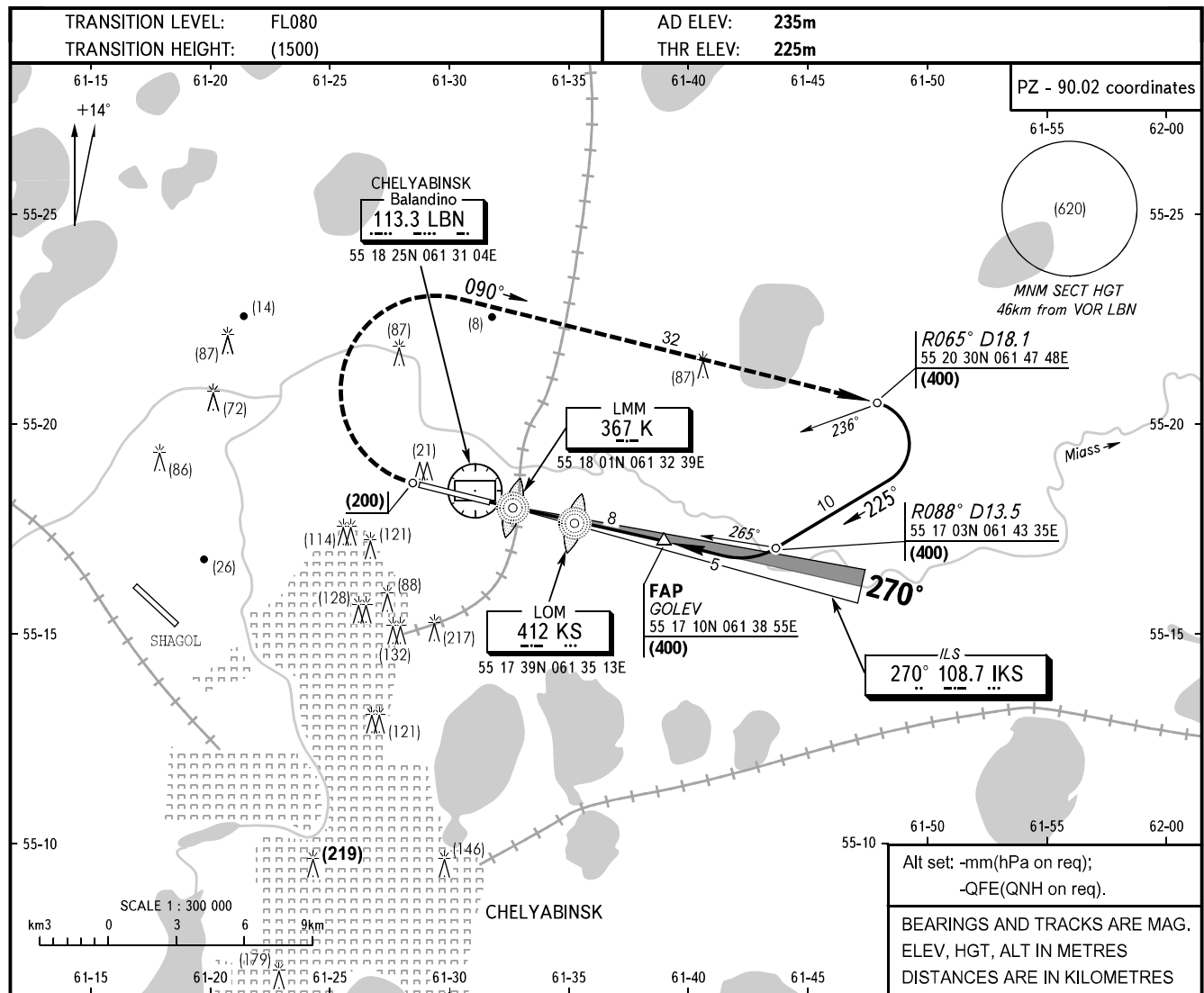


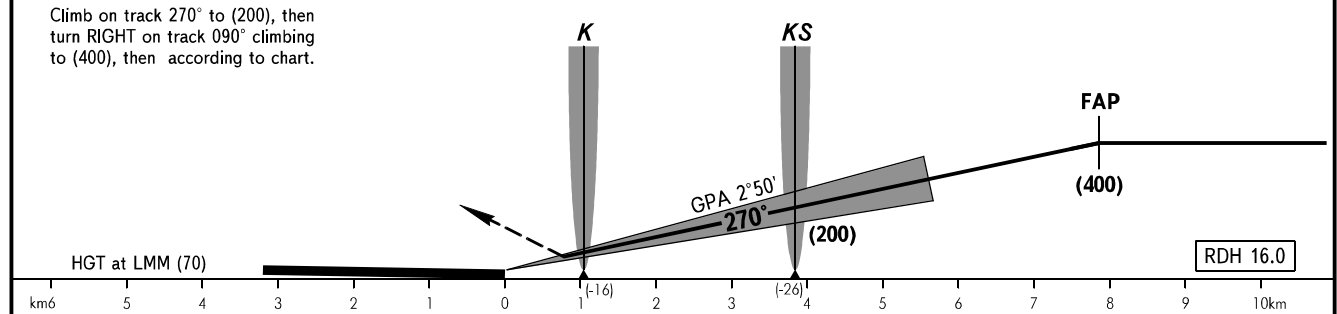
**INSTRUMENT
APPROACH
CHART - ICAO**

**CHELYABINSK, RUSSIA
BALANDINO
ILS RWY 27**

APPROACH	124.700
START	125.200



MISSED APPROACH
Climb on track 270° to (200), then turn RIGHT on track 090° climbing to (400), then according to chart.



OCA/H		A	B	C	D	E							
Straight-in	CAT I	268(43)	271(46)	274(49)	278(53)	290(65)							
	Approach												
GROUND SPEED		km/h	150	180	210	240	270	300	330	360	390	420	450
LOM-THR 3850m		min:sec	1.32	1.17	1.06	0.58	0.51	0.46	0.42	0.38	0.35	0.33	0.31
RATE OF DESCENT		m/s	2.0	2.4	2.8	3.2	3.6	4.0	4.4	4.9	5.3	5.6	5.9

CHANGE: FL, ELEV, R area, OCA/H