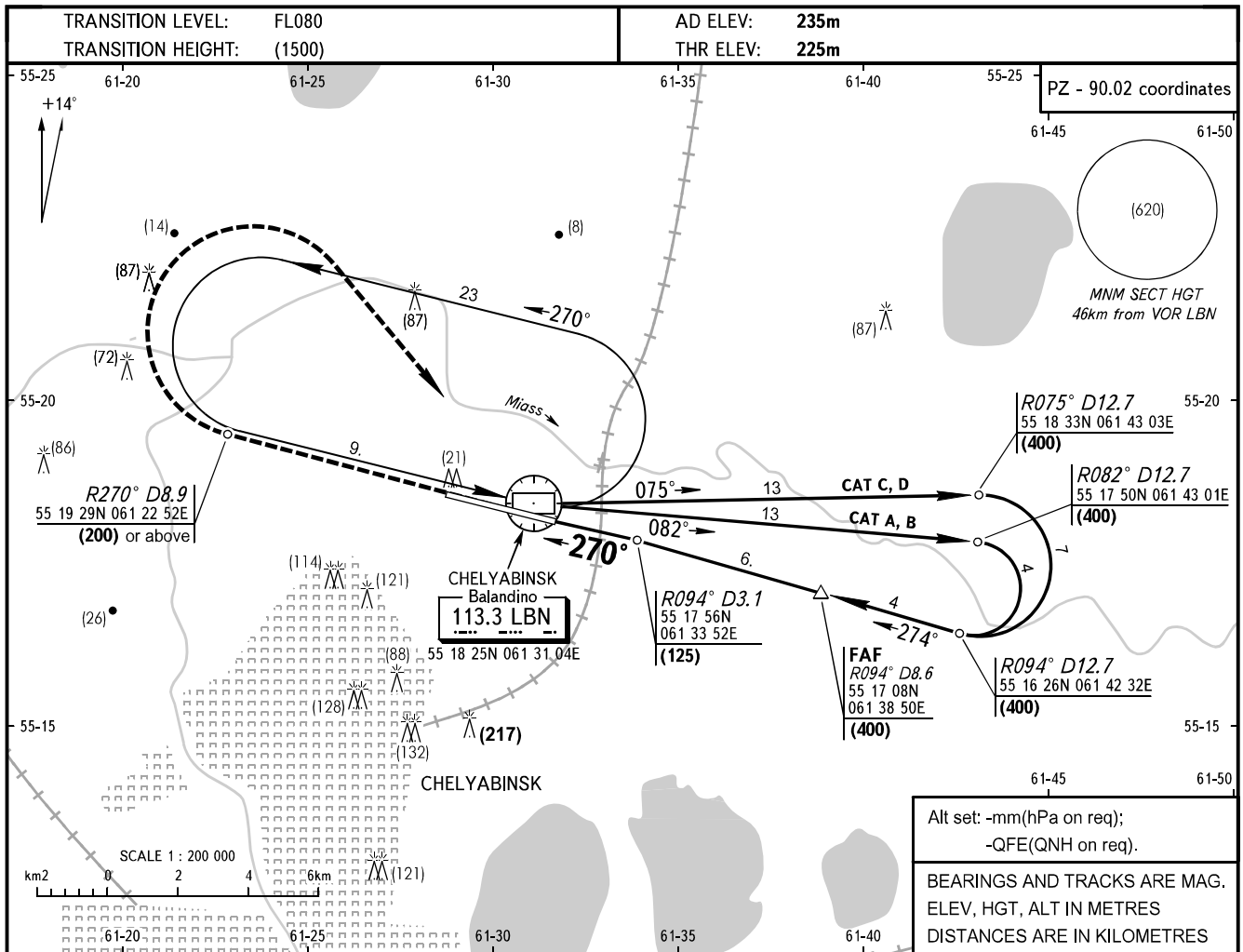


**INSTRUMENT
APPROACH
CHART - ICAO**

APPROACH	124.700
START	125.200

**CHELYABINSK, RUSSIA
BALANDINO
VORDME RWY 27**



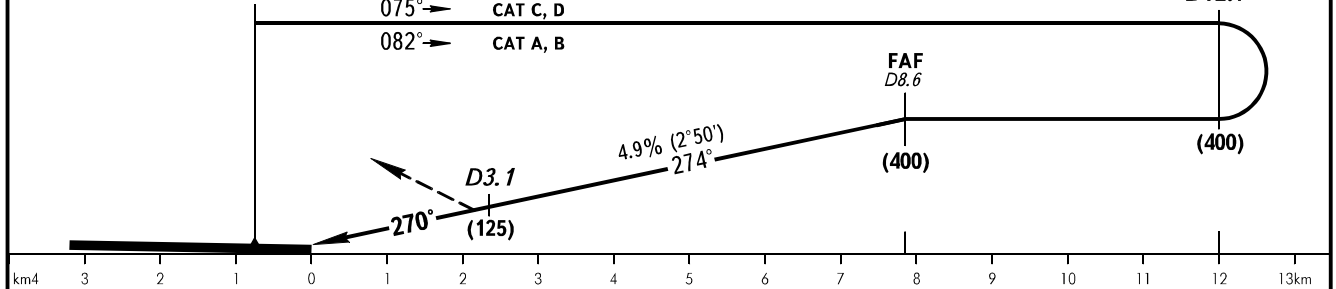
Alt set: -mm(hPa on req);
-QFE(QNH on req).
BEARINGS AND TRACKS ARE MAG.
ELEV, HGT, ALT IN METRES
DISTANCES ARE IN KILOMETRES

MISSED APPROACH

Climb on track 270° to (200) or above at 8.9km DME, then turn RIGHT climbing to (400) to VORDME.

DIST to THR, m	7.86	7.0	6.0	5.0	4.0	3.0	2.29	2.0	1.0	0.5	THR
DME LBN, km	8.60	7.75	6.75	5.75	4.75	3.77	3.1	2.77	1.78	1.29	0.82
HEIGHT, m	(400)	(350)	(305)	(255)	(205)	(160)	(125)	(110)	(65)	(40)	(15.8)

VORDME



OCA/H		A	B	C	D
Straight-in Approach	VORDME	347(122)	347(122)	347(122)	347(122)

WARNING
Traffic circuit height is (400).

GROUND SPEED	km/h	150	180	210	240	270	300	330	360	390	420	450
FAF-THR 7860m	min:sec	3.09	2.37	2.14	1.58	1.45	1.34	1.26	1.19	1.12	1.08	1.03
RATE OF DESCENT	m/s	2.0	2.4	2.8	3.2	3.6	4.0	4.4	4.9	5.3	5.6	5.9

CHANGE: FL, ELEV