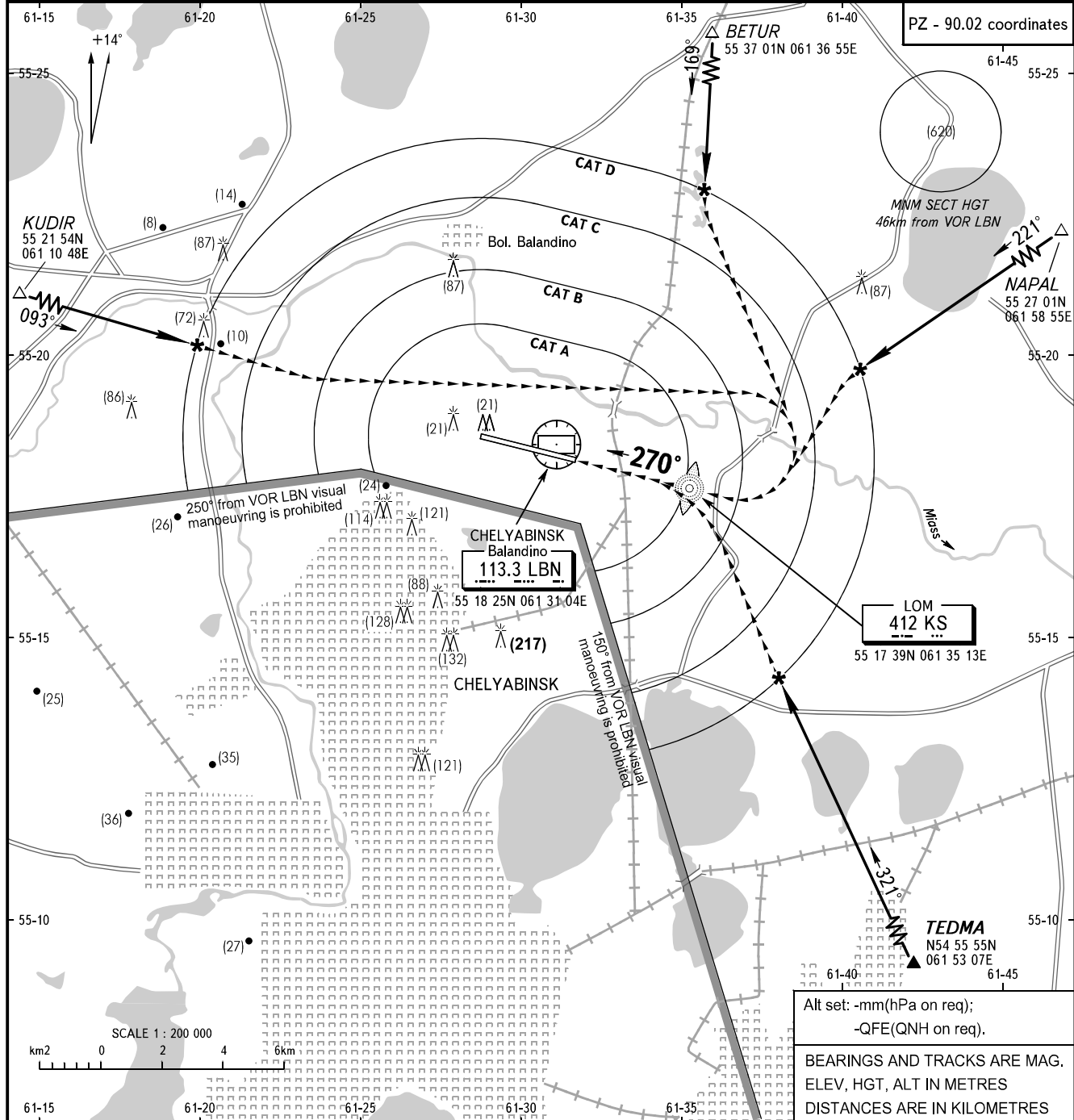


**INSTRUMENT
APPROACH
CHART - ICAO**

APPROACH	124.700
START	125.200

**CHELYABINSK, RUSSIA
BALANDINO
CIRCLING RWY 27**

TRANSITION LEVEL:	FL080	AD ELEV:	235m
TRANSITION HEIGHT:	(1500)	THR ELEV:	225m



OCA/H		A	B	C	D
Visual Manoeuvring (Circling) Area	RWY 27	346(121)	346(121)	376(151)	414(189)
ACFT CAT		A	B	C	D
MET conditions	MDH, m	130	150	180	210
	Cloud base, m	180	200	280	310
	Visibility, m	1600	2500	3000	4000

WARNING:

- The radii of visual manoeuvring (circling) area for ACFT categories are as follows:
 - A - 3700m
 - B - 5480m
 - C - 7850m
 - D - 9790m
- Arrival route from KUDIR shall not be used while flights operating on RWY 12 at Chelyabinsk/Shagol AD.