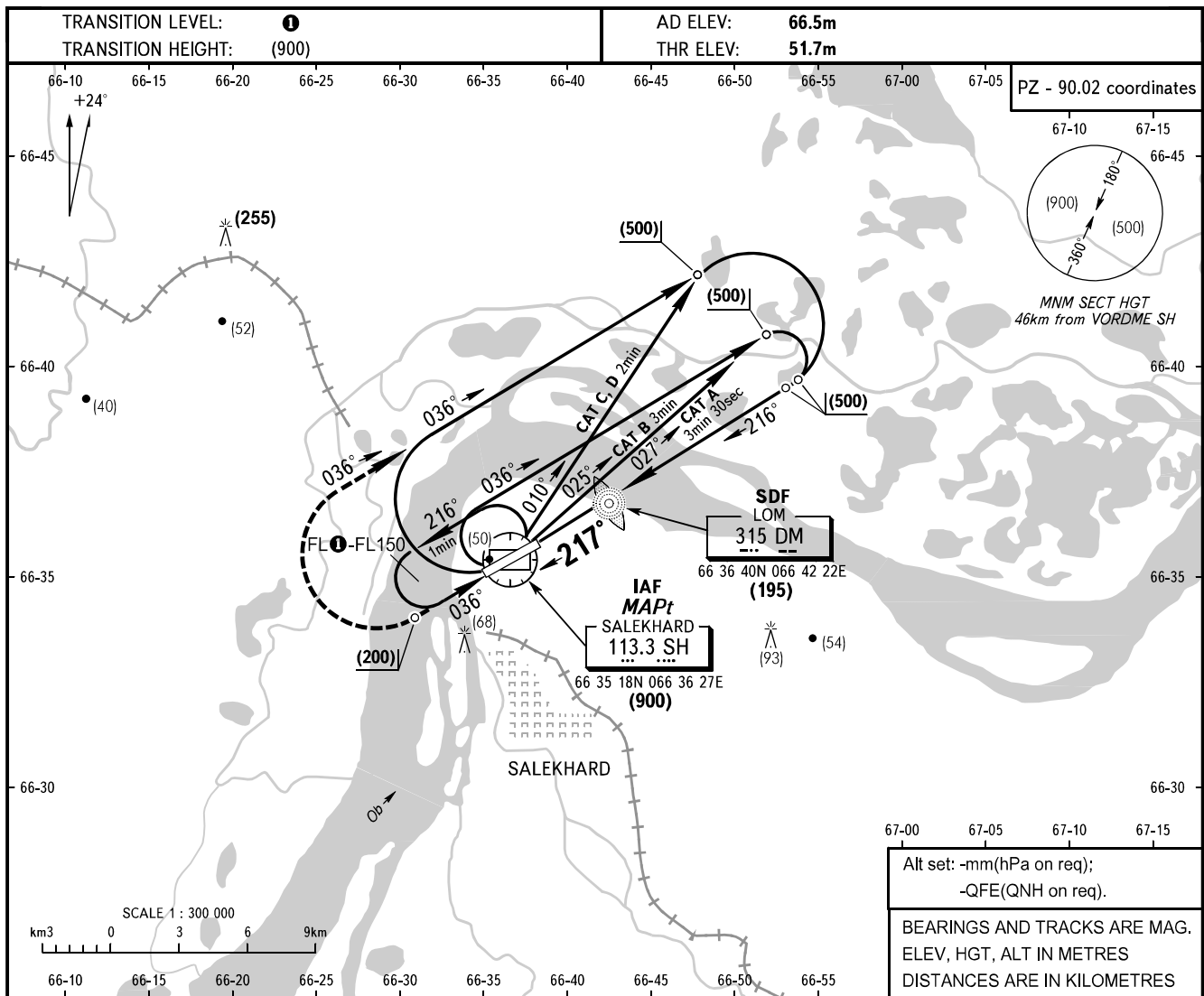


**INSTRUMENT  
APPROACH  
CHART - ICAO**

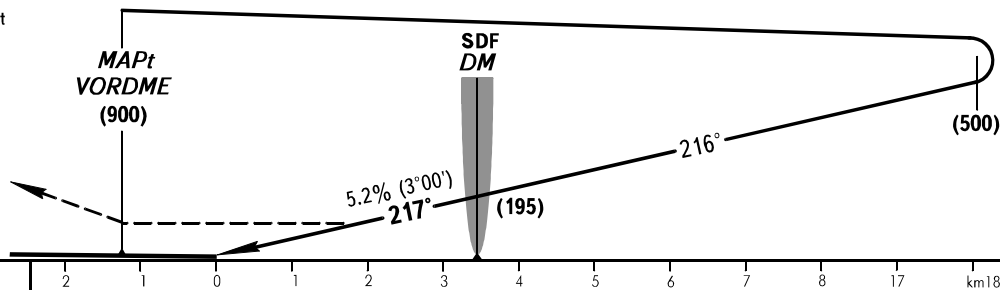
KRUG	120.800
START	118.600

**SALEKHARD, RUSSIA**  
SALEKHARD  
VORDME, LOM RWY 22



**MISSED APPROACH**

Proceed to VOR, then climb to (200) or above, then turn RIGHT on track 036° MAG climbing to (500) then according to chart or by ATS unit instruction.



OCA/H		A	B	C	D											
Straight-in	VOR LOM	170(115)	170(115)	170(115)	170(115)											
	VOR	185(130)	185(130)	185(130)	185(130)											
Approach																
GROUND SPEED		km/h	150	180	210	240	270	300	330	360	390	420	450			
RATE OF DESCENT		m/s	2.2	2.6	3.0	3.5	3.9	4.3	4.8	5.2	5.6	6.1	6.5			

**900** TRANSITION LEVEL:  
- FL050 when atmospheric pressure is 733mm mercury column or above;  
- FL060 when atmospheric pressure is 732mm mercury column or less.

CHANGE: COM, SDF, MNM