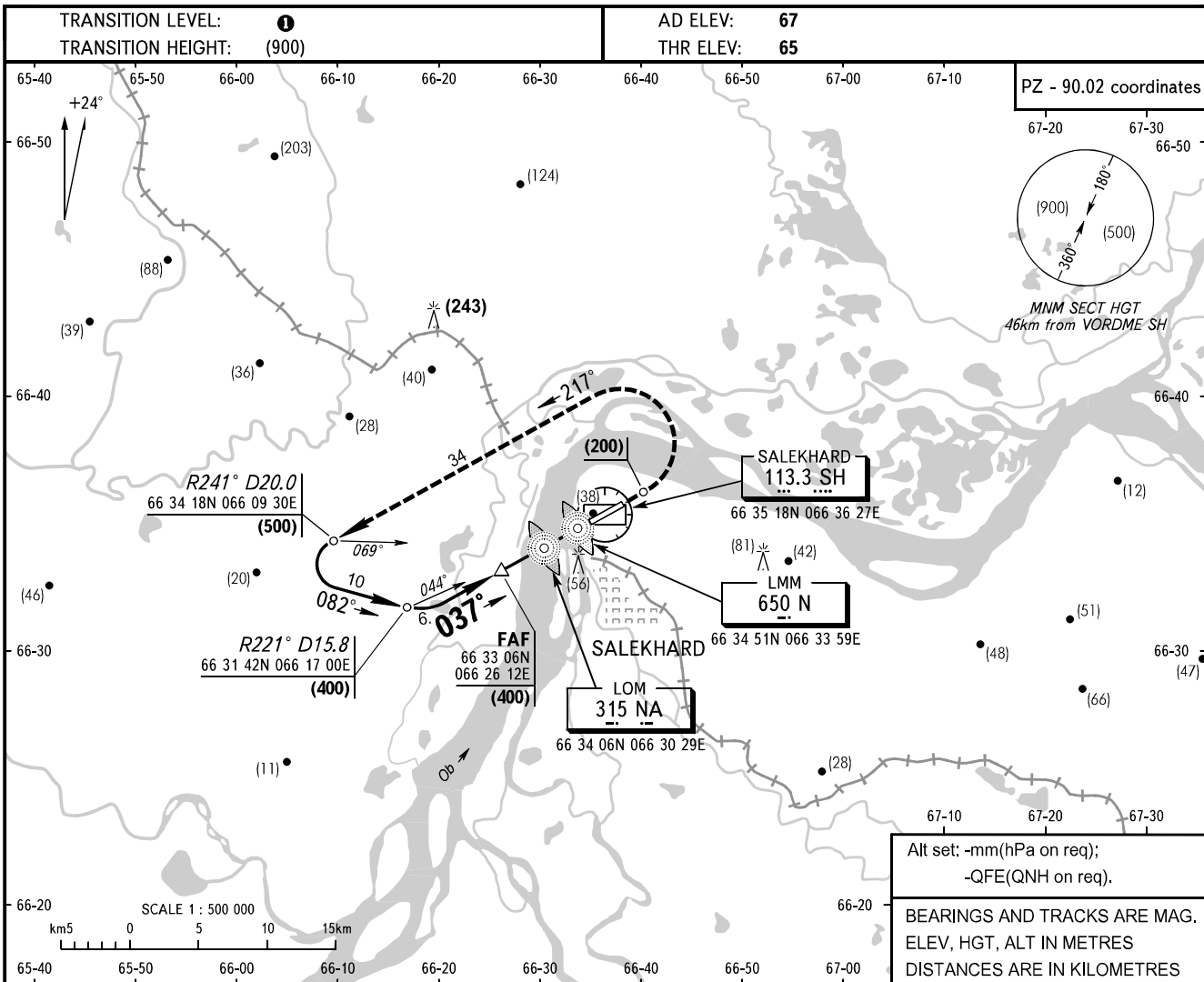


**INSTRUMENT  
APPROACH  
CHART - ICAO**

KRUG	120.800
START	118.600

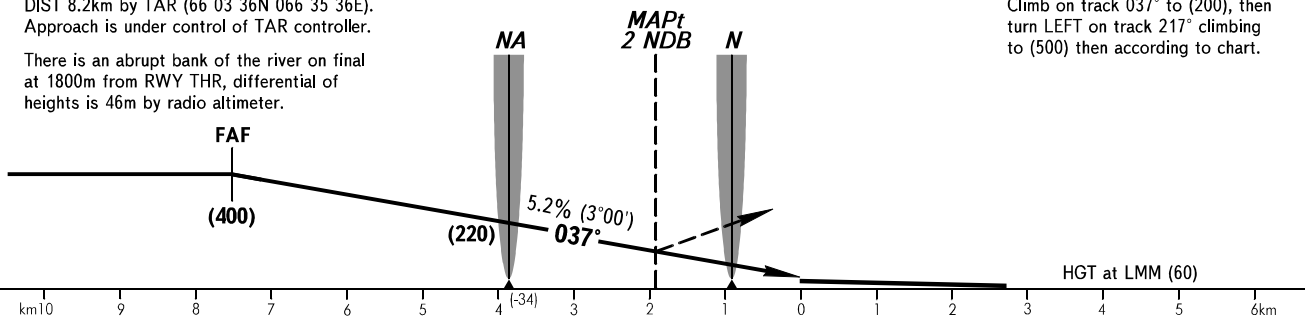
**SALEKHARD, RUSSIA**  
SALEKHARD  
2 NDB RWY 04



For 2 NDB approach FAF is AZM 212°  
DIST 8.2km by TAR (66 03 36N 066 35 36E).  
Approach is under control of TAR controller.

There is an abrupt bank of the river on final  
at 1800m from RWY THR, differential of  
heights is 46m by radio altimeter.

**MISSED APPROACH**  
Climb on track 037° to (200), then  
turn LEFT on track 217° climbing  
to (500) then according to chart.



OCA/H		A	B	C	D
Straight-in	<b>2 NDB</b>	182(118)	182(118)	182(118)	182(118)
	Approach				

**1** TRANSITION LEVEL:  
- FL050 when atmospheric pressure is 733mm mercury  
column or above;  
- FL060 when atmospheric pressure is 732mm mercury  
column or less.

GROUND SPEED	km/h	150	180	210	240	270	300	330	360	390	420	450
LOM-THR 3850m	min:sec	1.32	1.12	1.07	0.57	0.51	0.46	0.42	0.39	0.36	0.33	0.31
RATE OF DESCENT	m/s	2.2	2.6	3.0	3.5	3.9	4.3	4.8	5.2	5.6	6.1	6.5

CHANGE: NIL