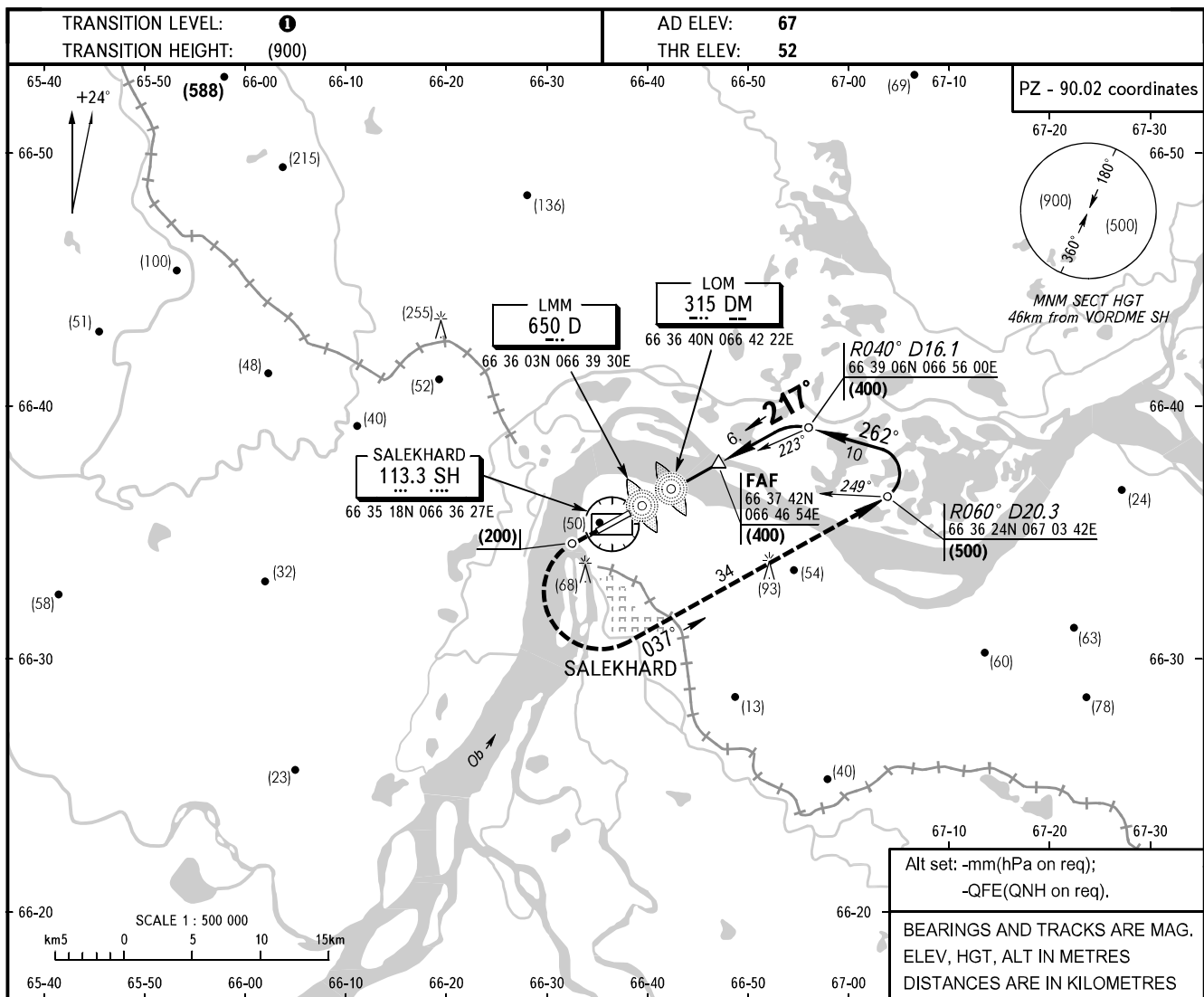


**INSTRUMENT  
APPROACH  
CHART - ICAO**

KRUG	120.800
START	118.600

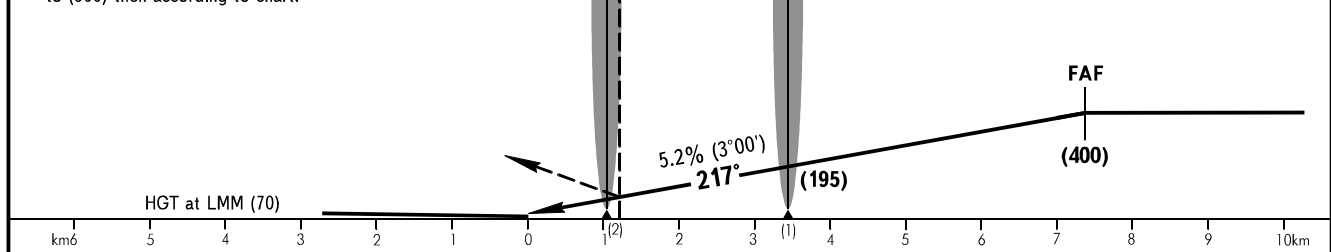
**SALEKHARD, RUSSIA**  
SALEKHARD  
2 NDB RWY 22



**MISSED APPROACH**  
Climb on track 217° to (200), then turn LEFT on track 037° climbing to (500) then according to chart.

**MAPt 2 NDB**

For 2 NDB approach FAF is AZM 043°  
DIST 9.3km by TAR (66 03 36N 066 35 36E).  
Approach is under control of TAR controller.



OCA/H		A	B	C	D
Straight-in	<b>2 NDB</b>	131(80)	131(80)	131(80)	131(80)
	Approach				

**TRANSITION LEVEL:**  
- FLO50 when atmospheric pressure is 733mm mercury column or above;  
- FLO60 when atmospheric pressure is 732mm mercury column or less.

GROUND SPEED	km/h	150	180	210	240	270	300	330	360	390	420	450
LOM-THR 3450m	min:sec	1.22	1.09	0.59	0.52	0.46	0.41	0.37	0.34	0.32	0.30	0.28
RATE OF DESCENT	m/s	2.2	2.6	3.0	3.5	3.9	4.3	4.8	5.2	5.6	6.1	6.5