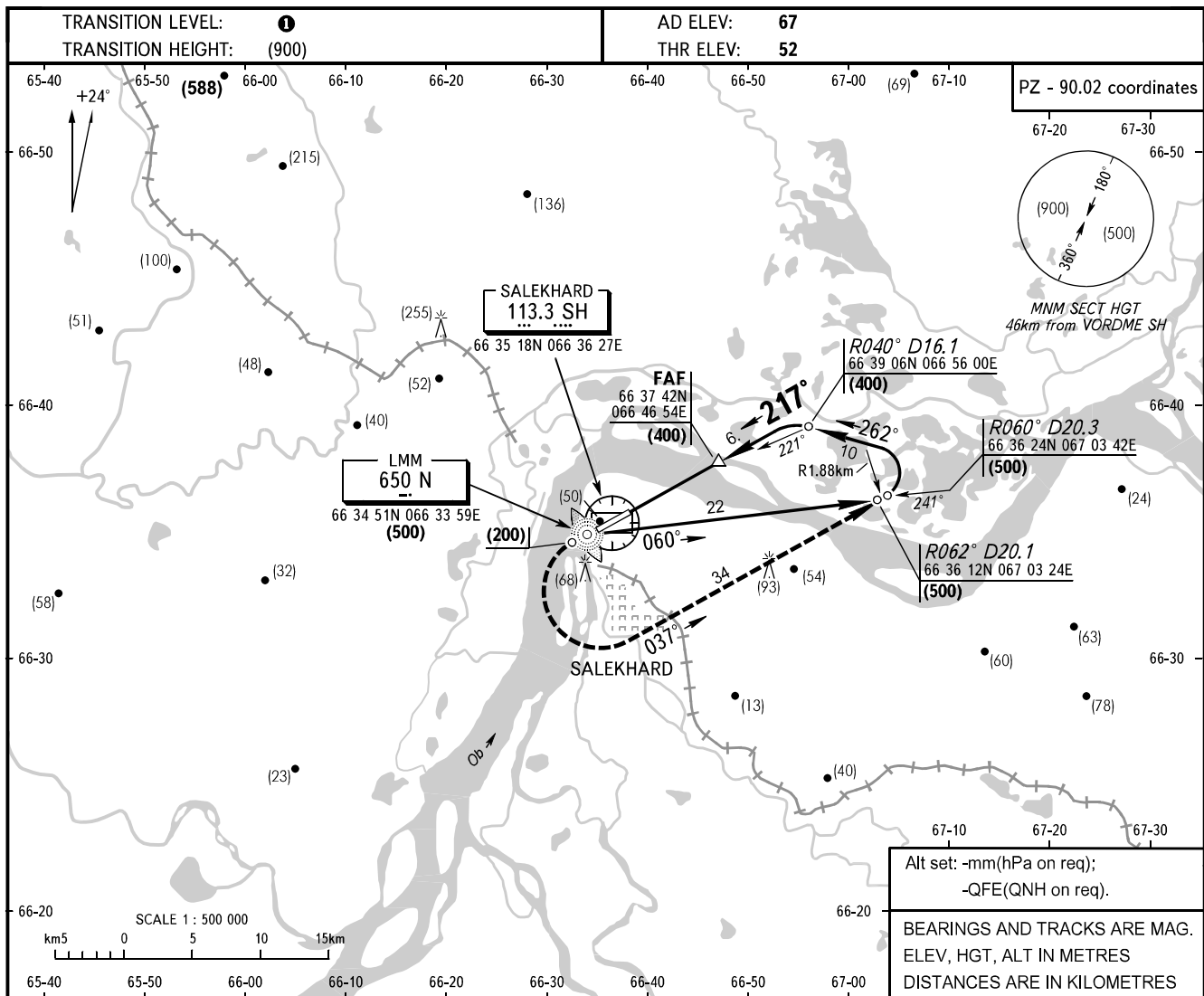


**INSTRUMENT
APPROACH
CHART - ICAO**

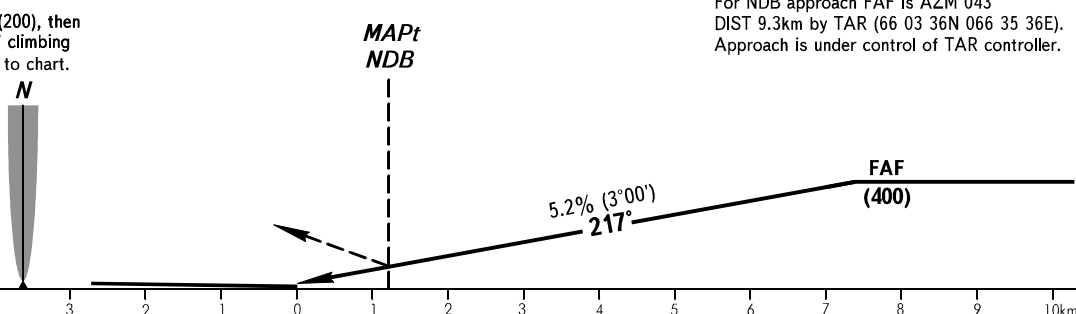
KRUG	120.800
START	118.600

**SALEKHARD, RUSSIA
SALEKHARD
NDB RWY 22**



MISSED APPROACH
Climb on track 217° to (200), then turn LEFT on track 037° climbing to (500) then according to chart.

For NDB approach FAF is AZM 043° DIST 9.3km by TAR (66 03 36N 066 35 36E). Approach is under control of TAR controller.



OCA/H		A	B	C	D
Straight-in	NDB	131(80)	131(80)	131(80)	131(80)
	Approach				

① TRANSITION LEVEL:
- FL050 when atmospheric pressure is 733mm mercury column or above;
- FL060 when atmospheric pressure is 732mm mercury column or less.

GROUND SPEED	km/h	150	180	210	240	270	300	330	360	390	420	450
FAF-THR 7400m	min:sec	2.57	2.28	2.07	1.51	1.39	1.28	1.21	1.14	1.08	1.03	0.59
RATE OF DESCENT	m/s	2.2	2.6	3.0	3.5	3.9	4.3	4.8	5.2	5.6	6.1	6.5