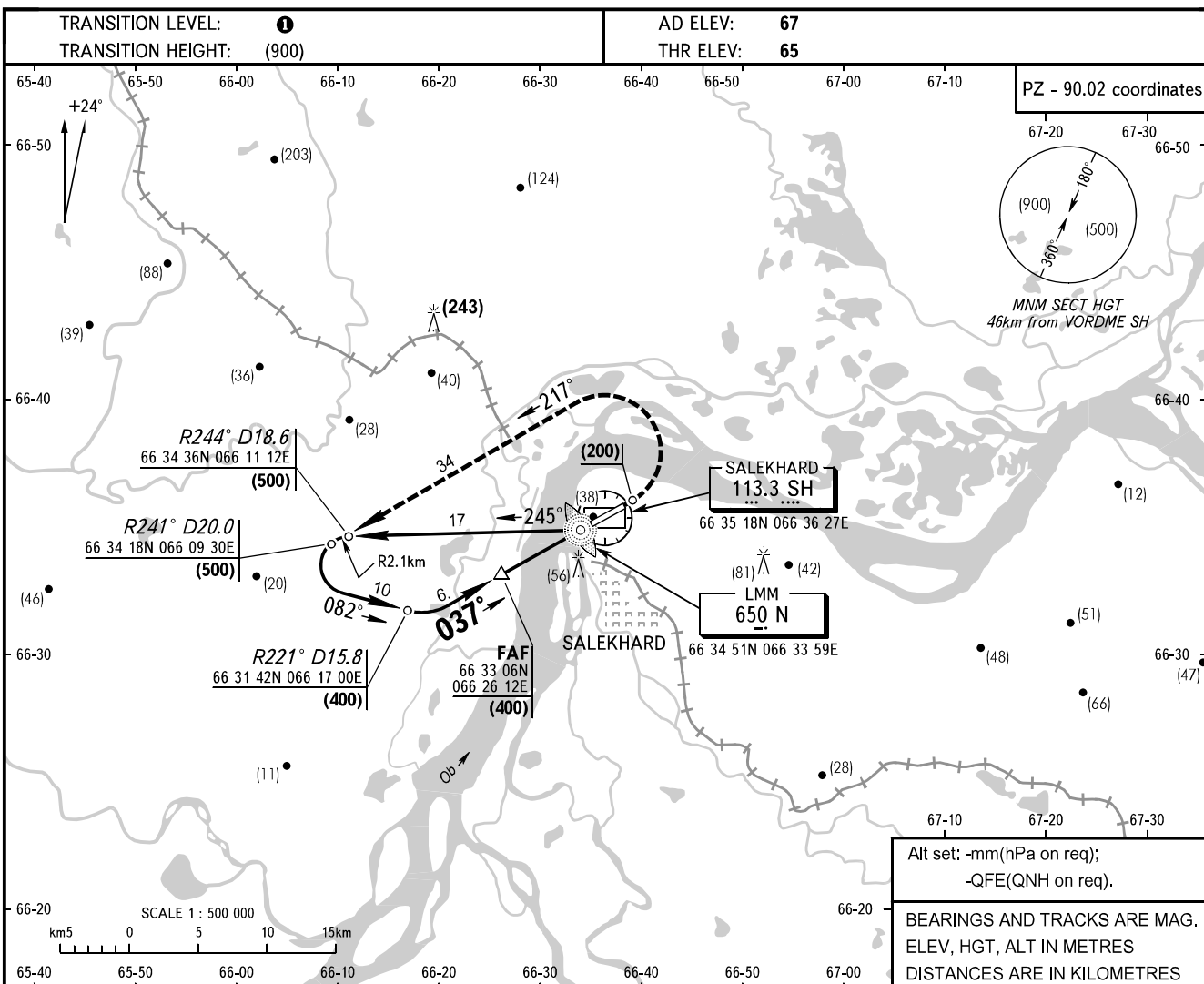


**INSTRUMENT
APPROACH
CHART - ICAO**

KRUG	120.800
START	118.600

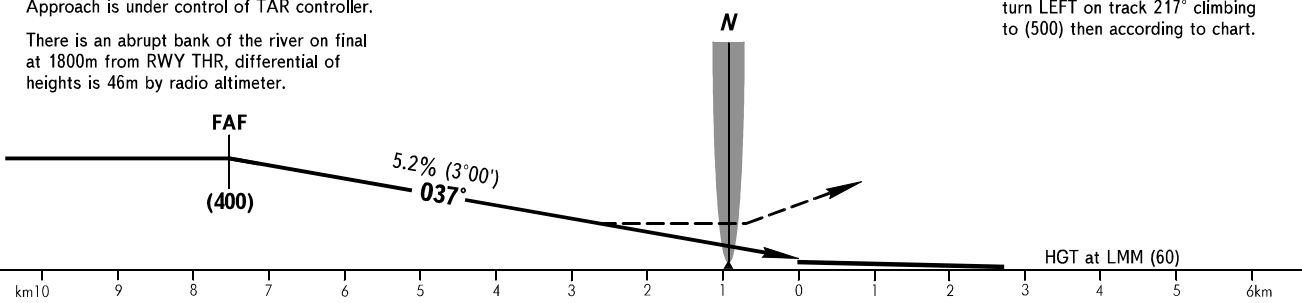
**SALEKHARD, RUSSIA
SALEKHARD
LMM RWY 04**



Alt set: -mm(hPa on req);
-QFE(QNH on req).
BEARINGS AND TRACKS ARE MAG.
ELEV, HGT, ALT IN METRES
DISTANCES ARE IN KILOMETRES

For LMM approach FAF is AZM 212°
DIST 8.2km by TAR (66 03 36N 066 35 36E).
Approach is under control of TAR controller.
There is an abrupt bank of the river on final
at 1800m from RWY THR, differential of
heights is 46m by radio altimeter.

MISSED APPROACH
Climb on track 037° to (200), then
turn LEFT on track 217° climbing
to (500) then according to chart.



OCA/H		A	B	C	D
Straight-in	LMM	252(188)	252(188)	252(188)	252(188)
	Approach				

1 TRANSITION LEVEL:
- FL050 when atmospheric pressure is 733mm mercury
column or above;
- FL060 when atmospheric pressure is 732mm mercury
column or less.

GROUND SPEED	km/h	150	180	210	240	270	300	330	360	390	420	450
FAF-THR 7400m	min:sec	2.57	2.28	2.07	1.51	1.39	1.28	1.21	1.14	1.08	1.03	0.59
RATE OF DESCENT	m/s	2.2	2.6	3.0	3.5	3.9	4.3	4.8	5.2	5.6	6.1	6.5

CHANGE: R, D